

NOTES:

ROOF PLATE STEEL IS WELDED ON BOTH SIDES OF RAFTERS WITH 1-1/2" LONG 1/8" FILLET WELDS ON 12" CENTERS.

WALL PANELS ARE ATTACHED WITH #12 TEK SCREWS - 6" O.C. AT THE TOP AND BOTTOM OF THE PANELS AND 12" O.C. AT ANY INTERMEDIATE BRACE.

LAP SCREWS ARE PLACED AT EACH END OF THE PANELS, AT THE INTERMEDIATE SUPPORTS, AND AT THE MID POINT BETWEEN SUPPORTS (TEK #14)

FLOOR PLANK IS ATTACHED TO W10 X 12 WITH 2- 2" TEK SCREWS PER END OF PLANK AND AT INTERMEDIATE SUPPORTS.

EXTERIOR DOORS

DOOR FRAME
CECO, SERIES SU STEEL FRAMES, 5'-3/4" x 3' x 6'-8" WITH WOOD/STUD ANCHORS, 16 GA., HEAVY DUTY, PRIMER PAINT COAT
UL LISTED 10B, EQUAL TO CECCO, STEEL DOOR FRAME ANSI A250.8-1998, ASTM A366, A620, A568 PRIMER PAINT COAT ANSI A250.10

DOOR
INSULATED
CECO, 1-3/4" REGENT RI (F) HONEY COMB CORE, 3'-0" x 6'-8" WITH BEVELED LOCK EDGE, 20 GA. STND DUTY, PRIMER PAINT COAT
UL LISTED 10B, EQUAL TO CECCO, STEEL DOOR ANSI A250.8-1998, ASTM A366, A620, A568 PRIMER PAINT COAT ANSI A250.10

DOOR CLOSURE
NORTON CLP-8501
EXIT DEVICE, YALE 2100
YALE TRIM, YALE 546F 626
ANSI/BHMA A1564.4 GRADE 1
ANSI/BHMA A156.3 GRADE 1
ANSI/BHMA A156.3 GRADE 1

LOAD CENTER SCHEDULE									
GENERAL ELECTRIC #TLM1620CCU									
PANEL LP		200 AMP RATED - 32 CIRCUIT W/ EQUIPMENT GROUND		240/120 VOLTS		1 PH.			
MOUNTING: <input checked="" type="checkbox"/> FLUSH <input type="checkbox"/> SURFACE		22,000 SYN. A.I.C. MIN.		100 AMP MAIN BREAKER					
	BREAKER SIZE	POLE	CIR. #	BUS A	B	CIR. #	BREAKER SIZE	POLE	
(2) RECPT. FRONT WALL	20	1	1	●		2	20	1	(2) RECPT. FRONT WALL
(3) 4'X1' 2 LAMP RECESSED	20	1	3	●		4	20	1	(3) 4'X2' 2 LAMP RECESSED
RECPT. BACK WALL	20	1	5		●	6	20	1	RECPT. BACK WALL
RECPT. FRONT WALL	20	1	7		●	8	20	1	RECPT. FRONT WALL
RECPT. BACK WALL	20	1	9	●		10	20	1	RECPT. BACK WALL
(2) RECPT. FRONT ROOFTOP	20	1	11	●		12	20	1	SPACE
(2) RECPT. REAR ROOFTOP	20	1	13		●	14	20	1	SPACE
BB HEATER #1	20	1	15	●	●	16	20	1	BB HEATER #2
BB HEATER #3	20	1	17	●		18	20	1	BB HEATER #4
SPACE			19	●		20			SPACE
SPACE			21		●	22			SPACE
SPACE			23		●	24			SPACE
AC CEILING CASSETTE-1	20	2	25	●		26			SPACE
			27	●		28			SPACE
AC CEILING CASSETTE-2	20	2	29	●		30	30	2	AC EXTERIOR UNIT
			31		●	32			

LEGEND ALL ELECTRONIC COMPONENTS ARE UL LISTED

A 4'X2' EDGELIT LED PANEL LIGHT
RAB LIGHTING EZPAN2X4-40N/D10
0.33A @ 120V INPUT WATTS: 39W

EXIT BATTERY BACK UP EMERGENCY/EXIT LIGHT
CONNECT TO LIGHT CIRCUIT AHEAD OF SWITCH.
NEC 700.12 (F)

15A 125V. DUPLEX RECPT.
- WR G.F.C.I. WHERE NOTED

S 15A. 120V. DECRATOR SWITCH

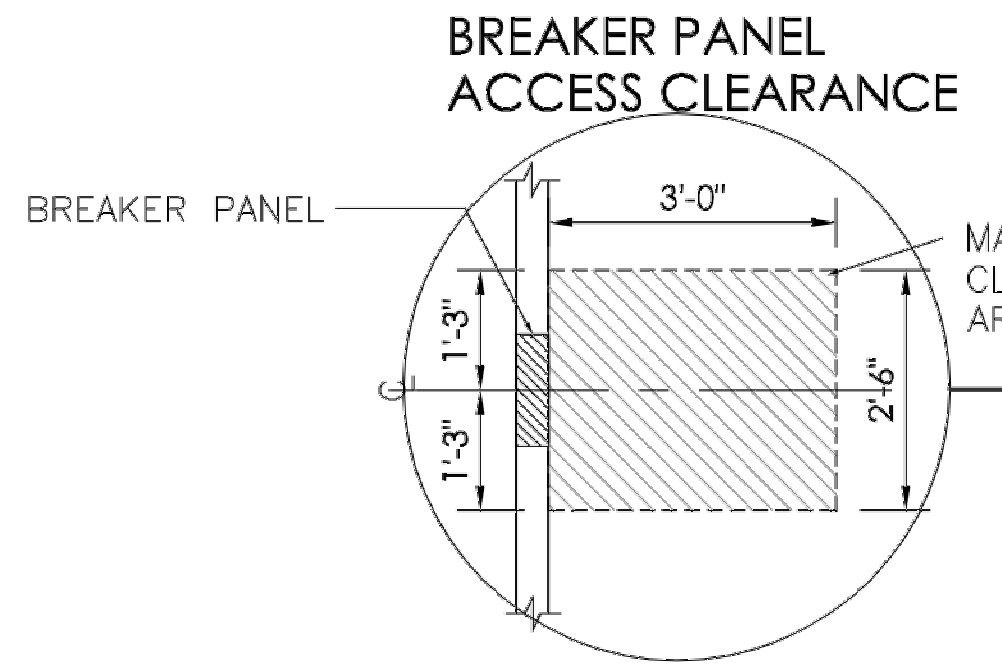
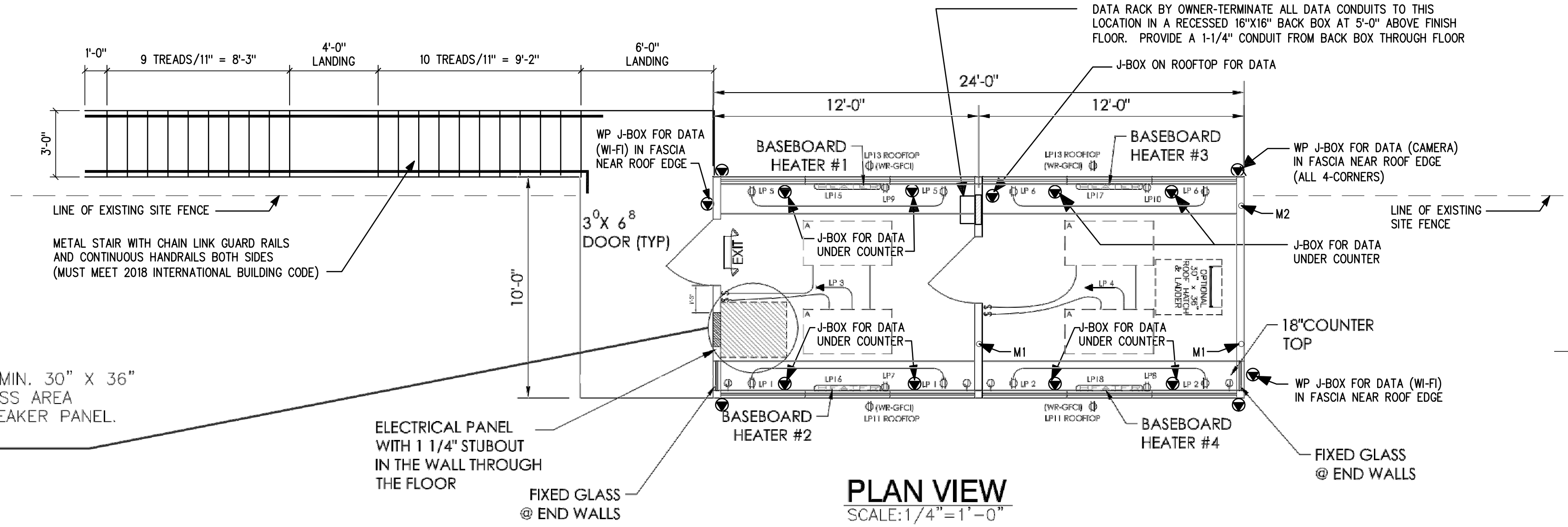
J 4X4X2 1/8" COMM. JUNCTION BOX
- W / 3/4" C STUBBED THROUGH FLOOR
FOR USE BY OTHERS

■ ELECTRICAL PANEL 'LP' WITH
100A/2P MAIN BREAKER
120 / 240V. - 1Ø - 200 AMP CAPACITY
GENERAL ELECTRIC #1620CCU

BB HEATER

BASEBOARD HEATER
36"-750w.-120v.-6.3 AMPS
BERCO BKOC2513W OR EQUAL

NOTE:
120V. DUPLEX RECPT. ARE LOCATED IN ONE END OF
BASEBOARD HEATERS USING ACCESSORY COVER
BKORA1. THERMOSTAT IN THE OTHER END - COVER
BKOTA1A W/ THERMOSTAT TAZA.
WALL RECPT. ARE NOT ABOVE BB HEATERS.

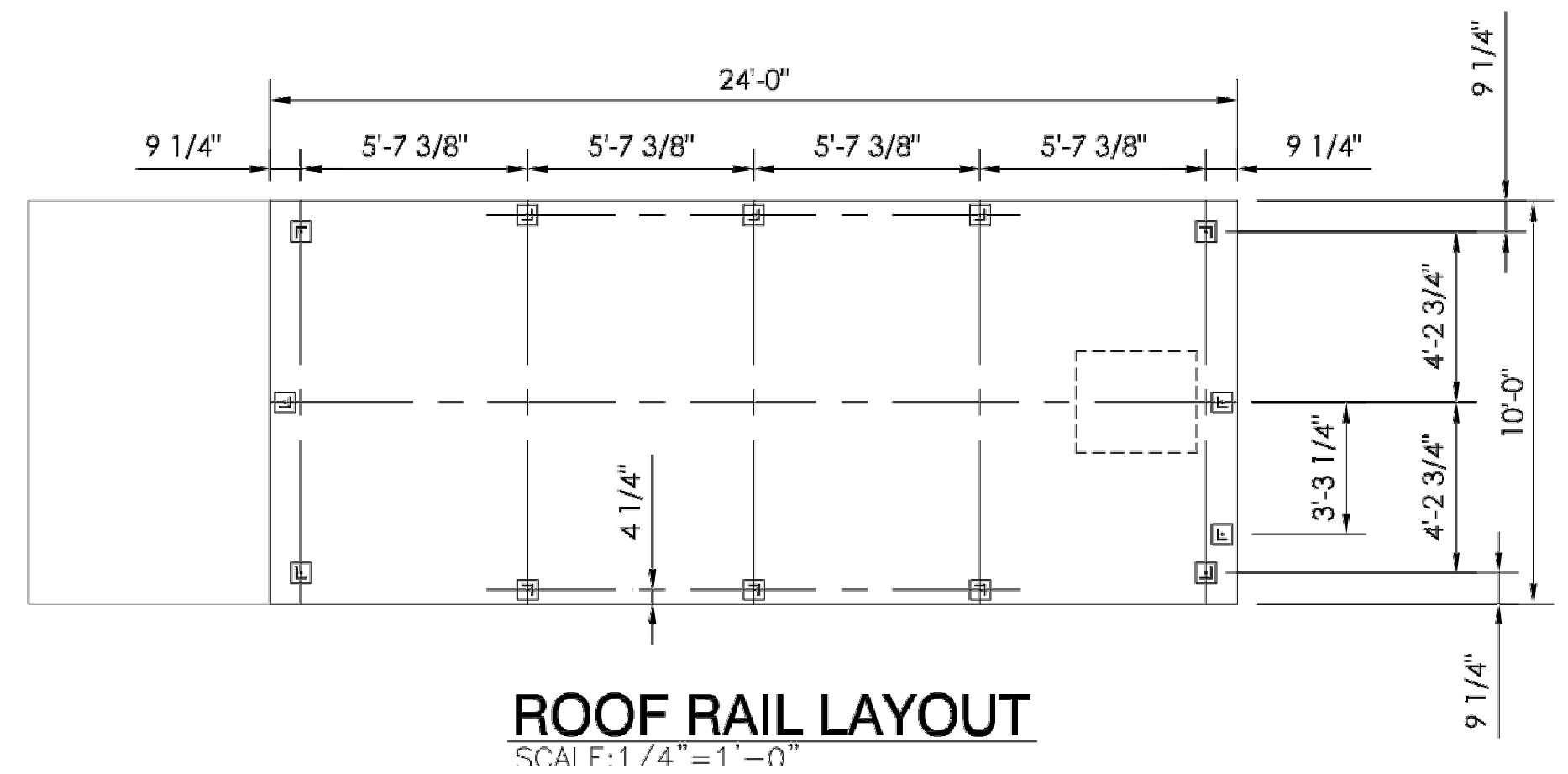
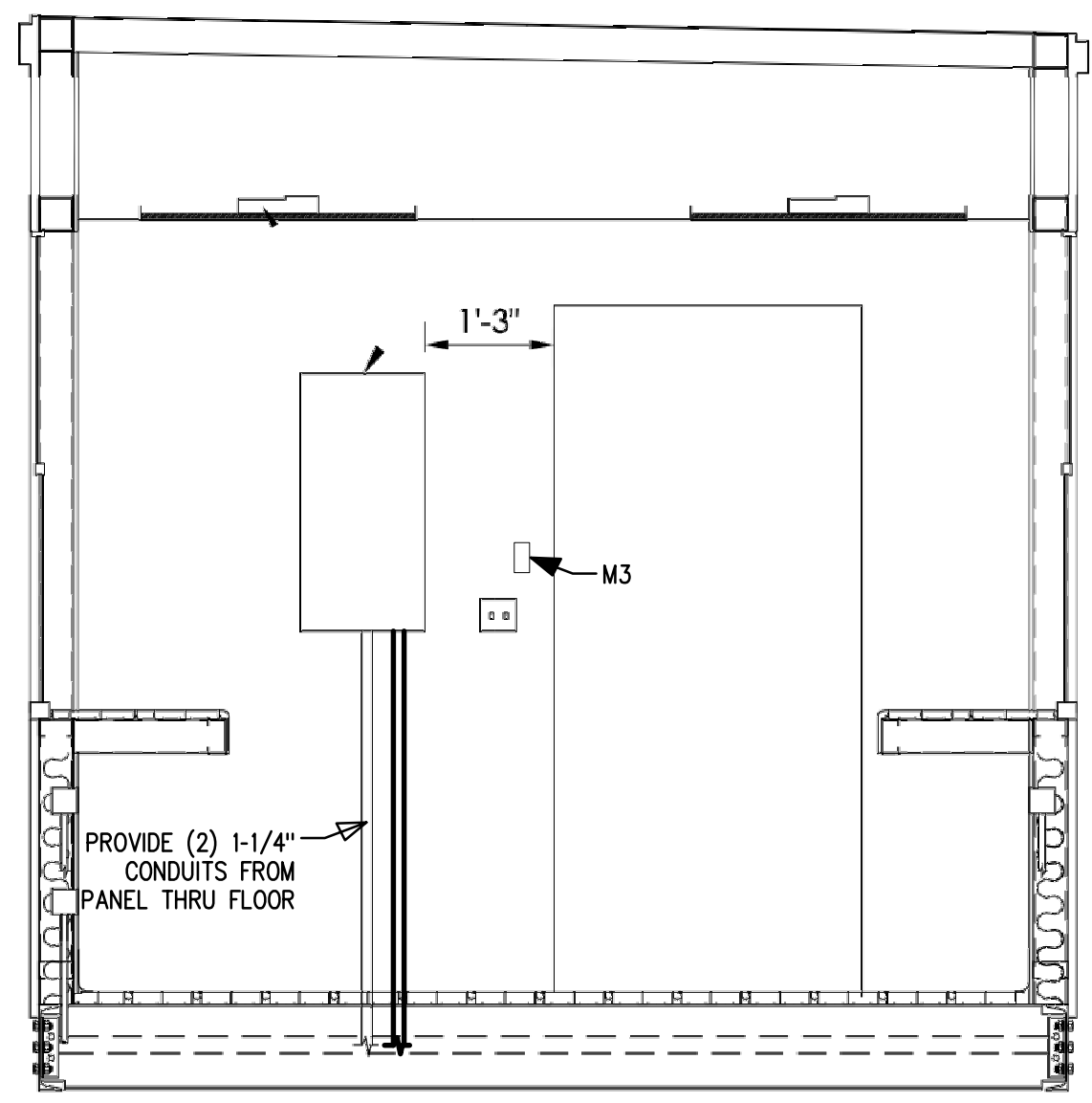
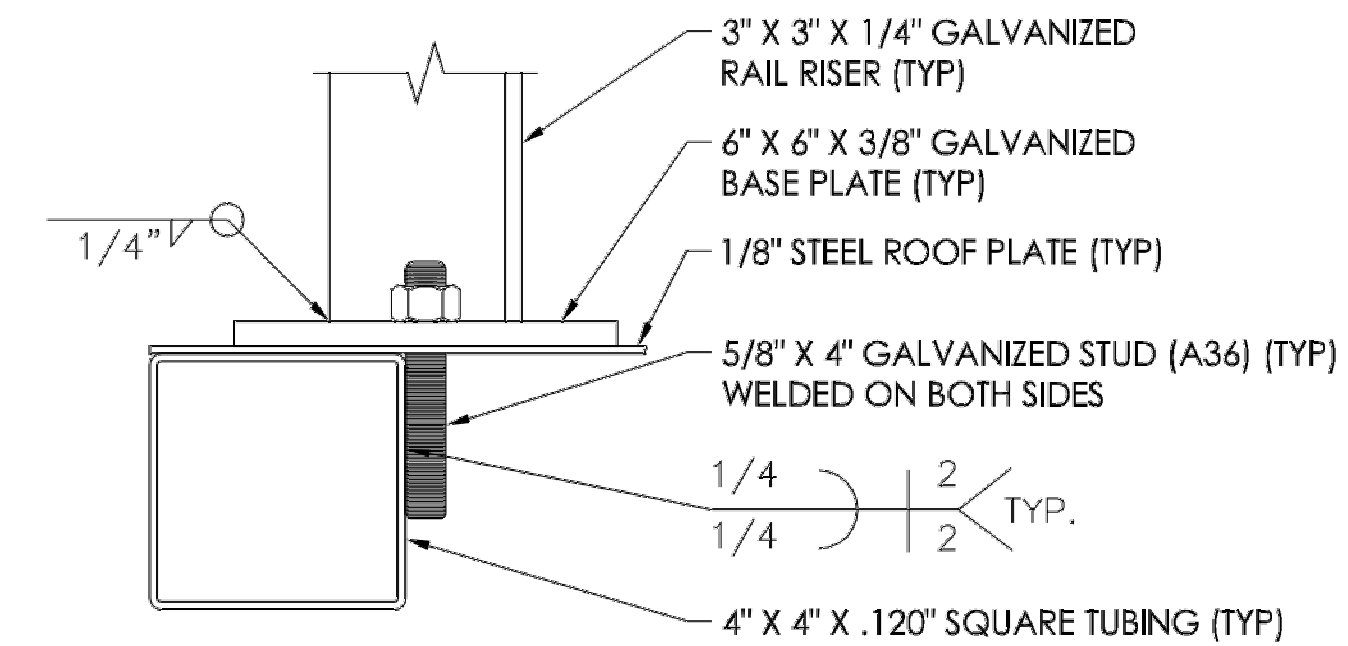


ELECTRICAL

- ALL WIRING TO BE ENCASED IN 1/2" THIN WALL EMT CONDUIT, 1/2" STEELFLEX, OR NON-METALLIC SURFACE RACEWAY UNLESS OTHERWISE NOTED.
- ALL RECEPTACLES TO BE GROUNDING TYPE.
- MAIN PANEL TO BE MARKED SUITABLE FOR USE AS SERVICE EQUIPMENT, AND BE EQUIPPED WITH BREAKER/FUSE TYPE OVER CURRENT PROTECTION. PANEL DOOR SHALL BE LOCKABLE.
- DISCONNECTING MEANS WITHIN SITE REQUIRED FOR ALL MOTORS.
- WEATHERPROOF PROTECTION REQUIRED FOR ALL OUTDOOR LIGHTS, RECEPTACLES AND DISCONNECTS.
- PROPER WORKING CLEARANCES TO BE PROVIDED AND MAINTAINED AROUND ALL ELECTRICAL EQUIPMENT.
- ALL FLUORESCENT FIXTURES REQUIRE THERMAL PROTECTION AND PROPER CLEARANCES FROM INSULATION, ALSO APPLICABLE FOR INCANDESCENT FIXTURES.
- SERVICE CONDUCTORS LOCATED WITHIN THE PERIMETER OF THE BUILDING SHALL BE INSTALLED PER 2008 NEC.
- ELECTRICAL WIRING TO BE INSTALLED PER 2008 NEC.
- ALL WIRING ON 20A. BREAKERS SHALL BE #12 = THHN - THWN
- EQUIPMENT GROUND RUN IN ALL CONDUITS OR NON-METALLIC SURFACE RACEWAYS.
- PROVIDE 3/4" CONDUIT FROM EACH DATA J-BOX TO THE DATA RACK BACK BOX.
- PROVIDE POWER FROM PANEL LP TO A J-BOX IN THE CEILING IN EACH ROOM FOR AC CASSETTE UNITS 1 & 2. ADJUST LIGHTING LAYOUT TO ACCOMMODATE: Mitsubishi P-Series PLA-A18EA7 (33"x33"x15" TALL)

MECHANICAL AC UNIT PREP

- PROVIDE 3" CONDUIT IN WALL FROM CEILING PLENUM THRU FLOOR STRUCTURE FOR MECHANICAL LINE SETS TO BE INSTALLED BY OTHERS. CONDUIT REQUIRES A LONG-SWEEP ELBOW INTO THE CEILING PLENUM.
- PROVIDE A 1" CONDUIT FROM CEILING PLENUM THRU FLOOR STRUCTURE FOR MECHANICAL CONDENSATE DRAIN LINE TO BE INSTALLED BY OTHERS.
- PROVIDE A SINGLE J-BOX WITH 3/4" CONDUIT STUBBED TO THE CEILING PLENUM FOR A THERMOSTAT TO BE INSTALLED WITH THE AC SYSTEM BY OTHERS.



NAYLOR WENTWORTH LUND ARCHITECTS
336 South 400 West
Salt Lake City, Utah
84101
Tel 801 355-5959
Fax 801 355-5960

Ogden School District
1950 Monroe Blvd.
Ogden, Utah 84401



Project For
The Ogden School District Board of Education

Ogden School District
Soccer Press Box

1950 Monroe Blvd
Ogden, Utah 84401

Project Phase
RFP 9-022 Bid Drawings

Revision Schedule

No.	Description	Date

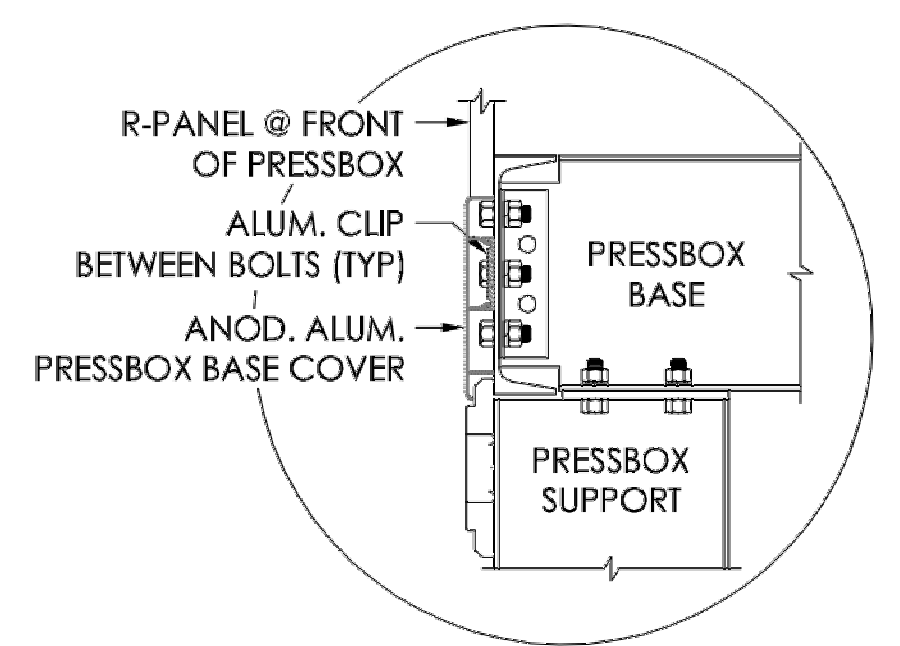
Project Number
143.003

Project Issue Date
May 24, 2019

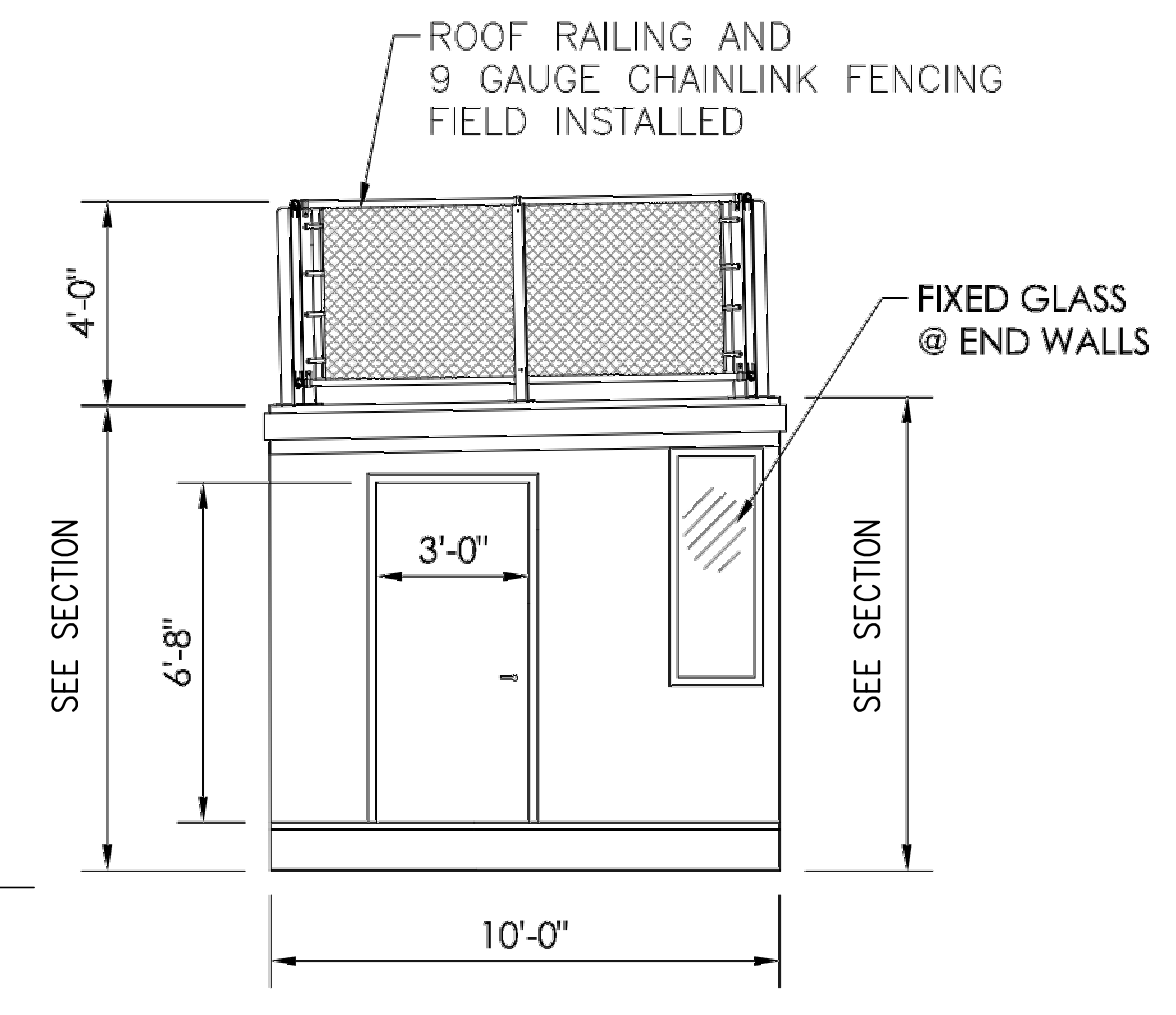
Sheet Title
Press Box Plans, Section & Details

Sheet Number

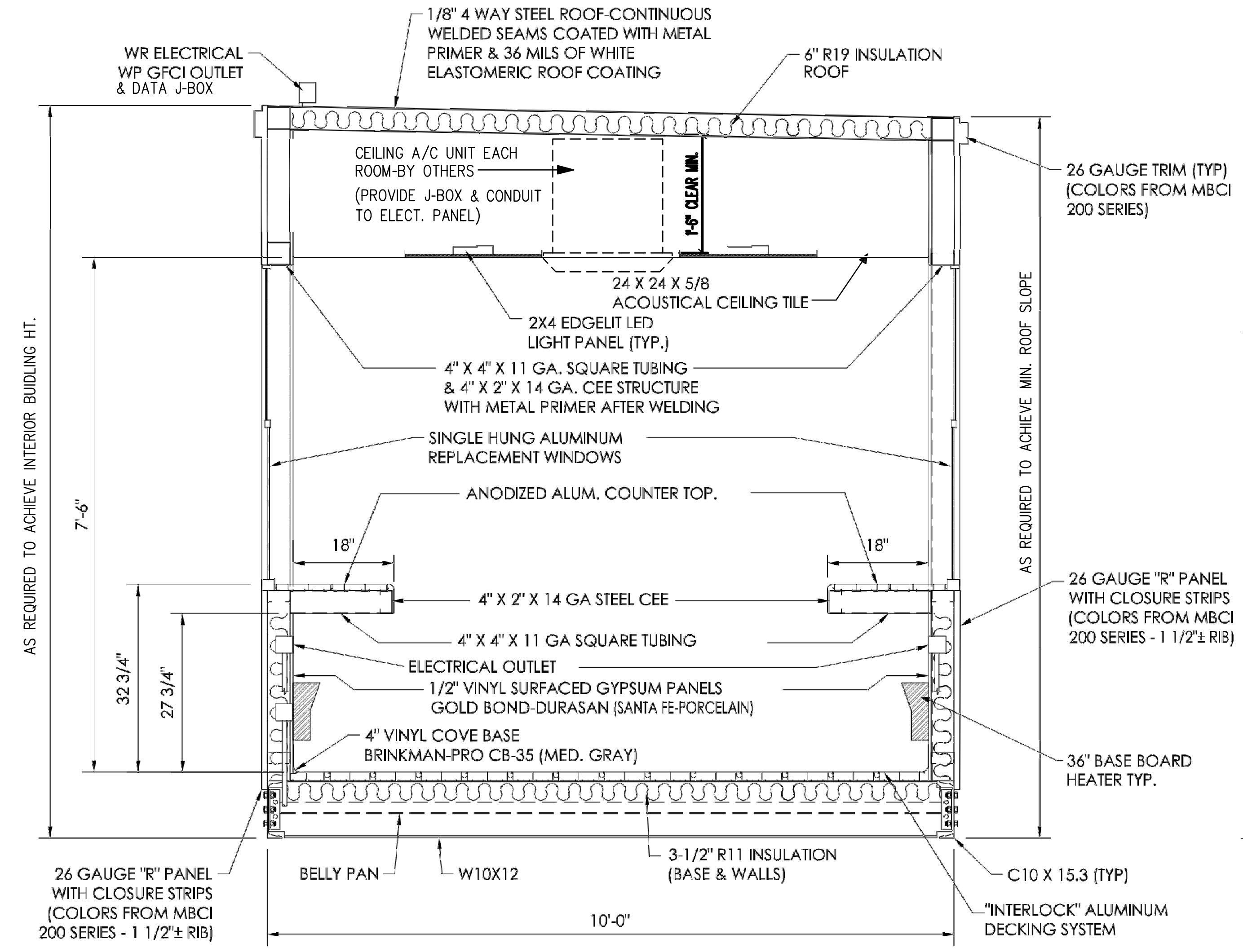
No.	Description	Date



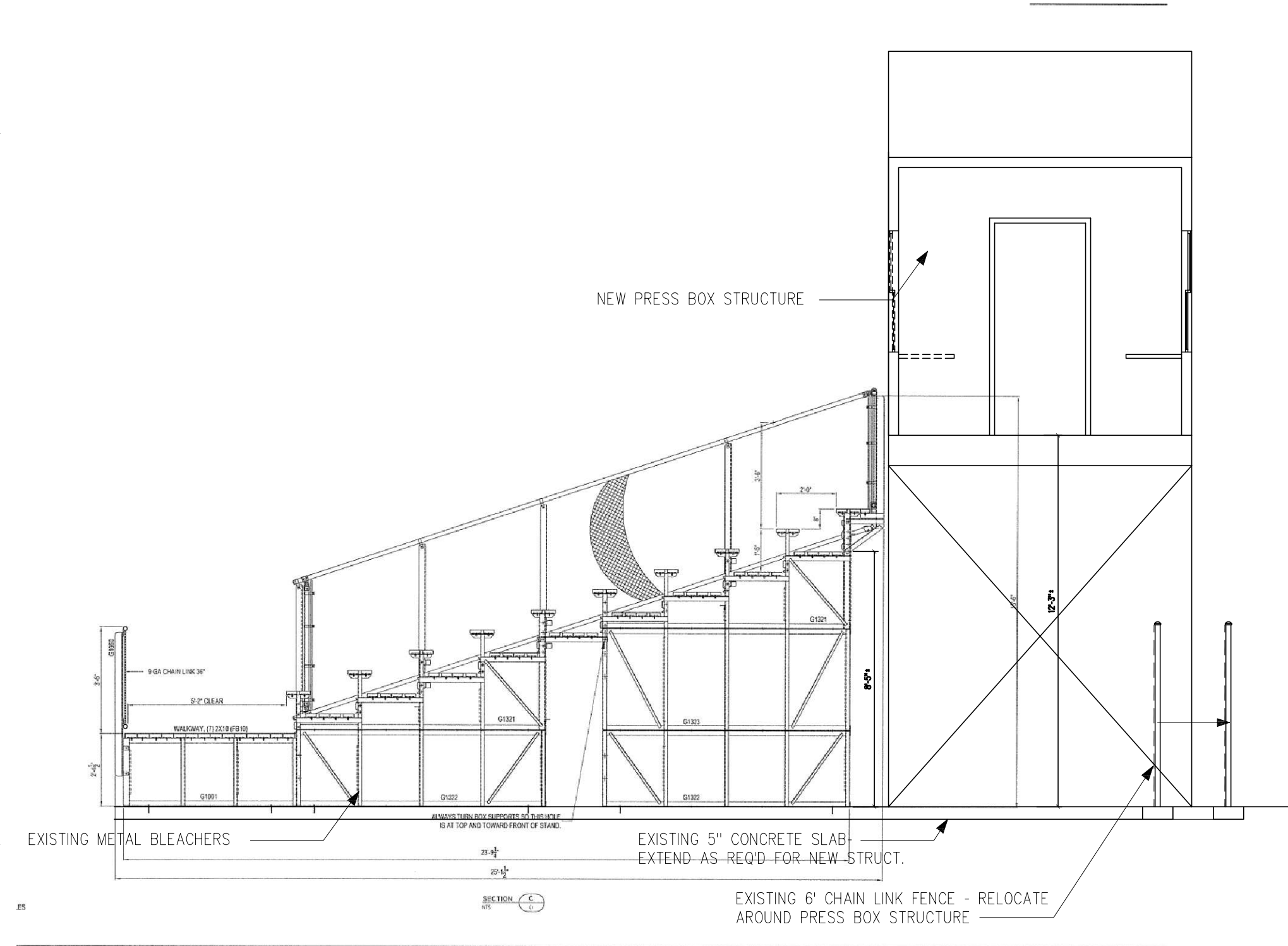
PRESSBOX BASE TRIM DETAIL
NOT TO SCALE



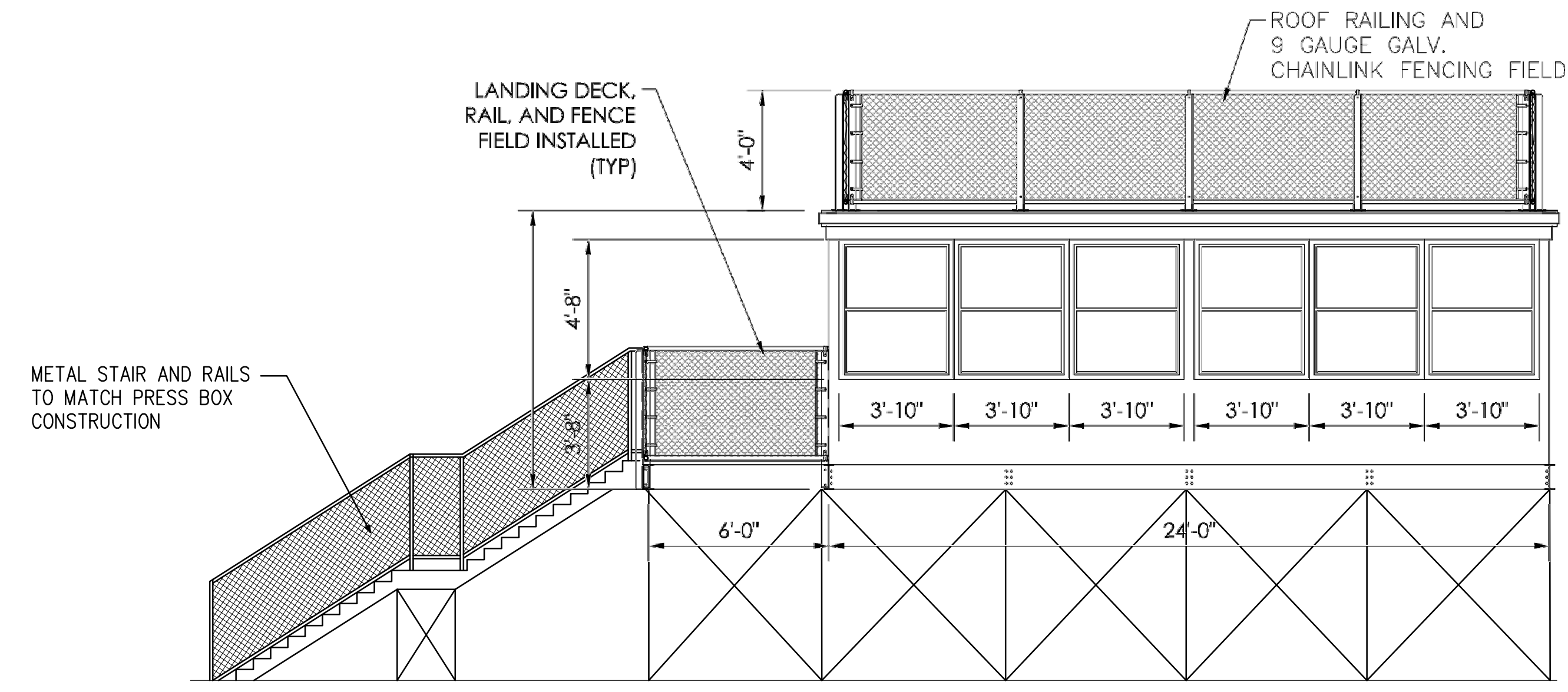
SIDE VIEW
SCALE: 1/4" = 1'-0"



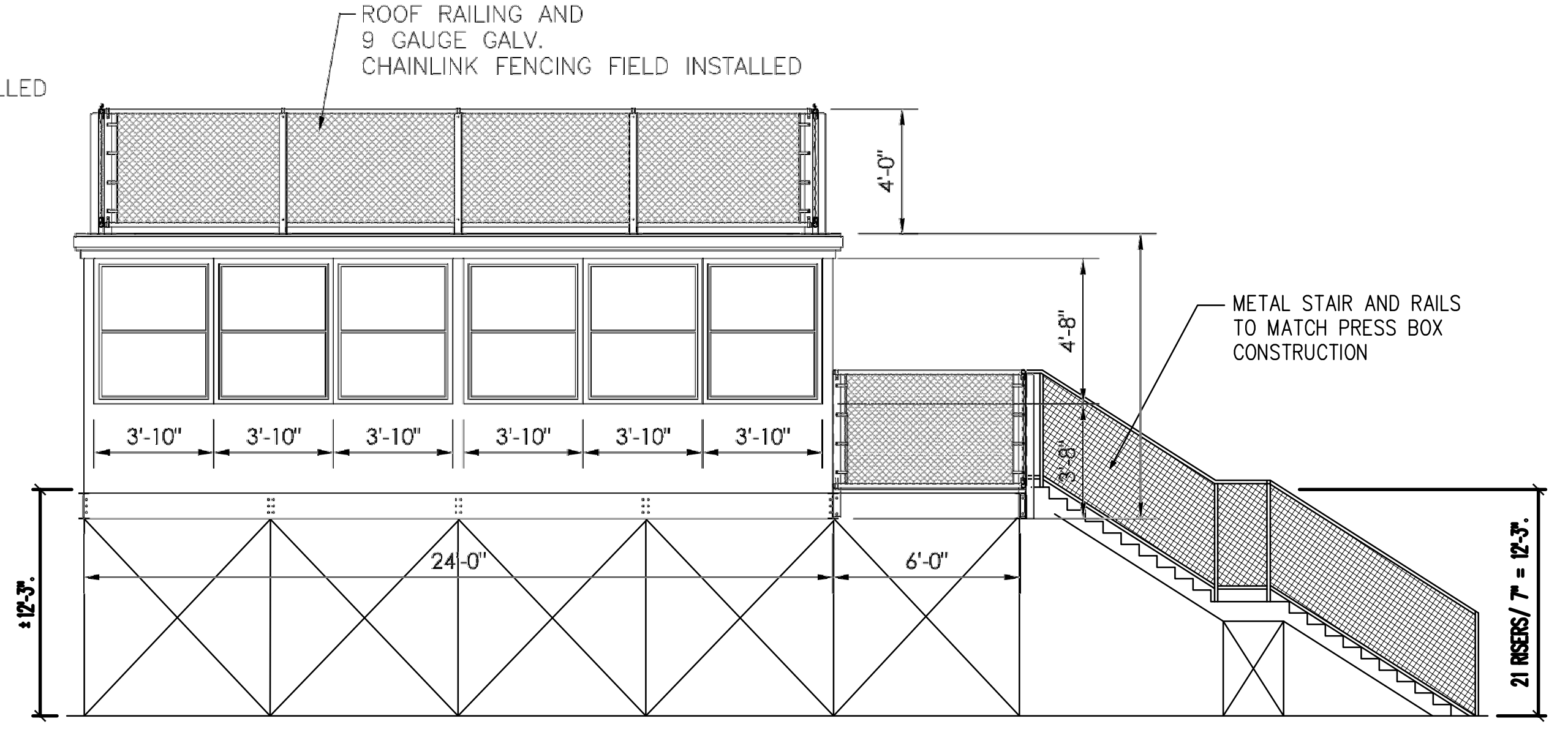
SECTION VIEW
NTS



SECTION AT EXISTING BLEACHERS
NTS



FRONT ELEVATION VIEW (East)
SCALE: 1/4" = 1'-0"



REAR ELEVATION VIEW (West)
SCALE: 1/4" = 1'-0"