

# **MOUND FORT MIDDLE SCHOOL STAGE LIGHTING CONTROLS UPGRADE**

**Electrical Addendum #1**

**Issue Date: 12/20/2023**

The following changes are based on questions that came up during the pre-bid walk on December 08, 2023

## **CHANGES TO THE DRAWINGS:**

### **SHEET E001**

1. Added the additional house lighting circuits that were discovered during the pre-bid walk.
2. Added the circuits for the lecture spaces at the back of the auditorium.
3. Added an Architectural lighting controls processor to the riser.

### **SHEET E101**

1. Added the additional panels that are on stage.
2. Updated keynote D2.
3. Added keynote D4.

### **SHEET E102**

1. Added the feeder routing and information for the second relay panel.
2. Added the location of the Architectural lighting controls processor.
3. Added sheet keynotes E4 through E9

**END OF ELECTRICAL ADDENDUM**

# OGDEN SCHOOL DISTRICT

1950 MONROE BLVD  
OGDEN, UTAH 84401



## MOUND FORT MIDDLE SCHOOL STAGE LIGHTING CONTROLS UPGRADE

**BNA** CONSULTING  
SALT LAKE ST. GEORGE  
4225 Lake Park Blvd Ste 275  
West Valley City, Utah 84120  
P:801.532.2196  
www.bnaconsulting.com



**MOUND FORT  
MIDDLE SCHOOL  
1400 MOUND FORT DRIVE  
OGDEN, UTAH 84404**

### INDEX OF DRAWINGS

COVER SHEET
E100 SYMBOLS, SCHEDULES, NOTES AND RISER DIAGRAMS
E101 ELECTRICAL DEMOLITION PLAN - AUDITORIUM AREA
E101 ELECTRICAL PLAN - AUDITORIUM AREA

SYMBOL SCHEDULE

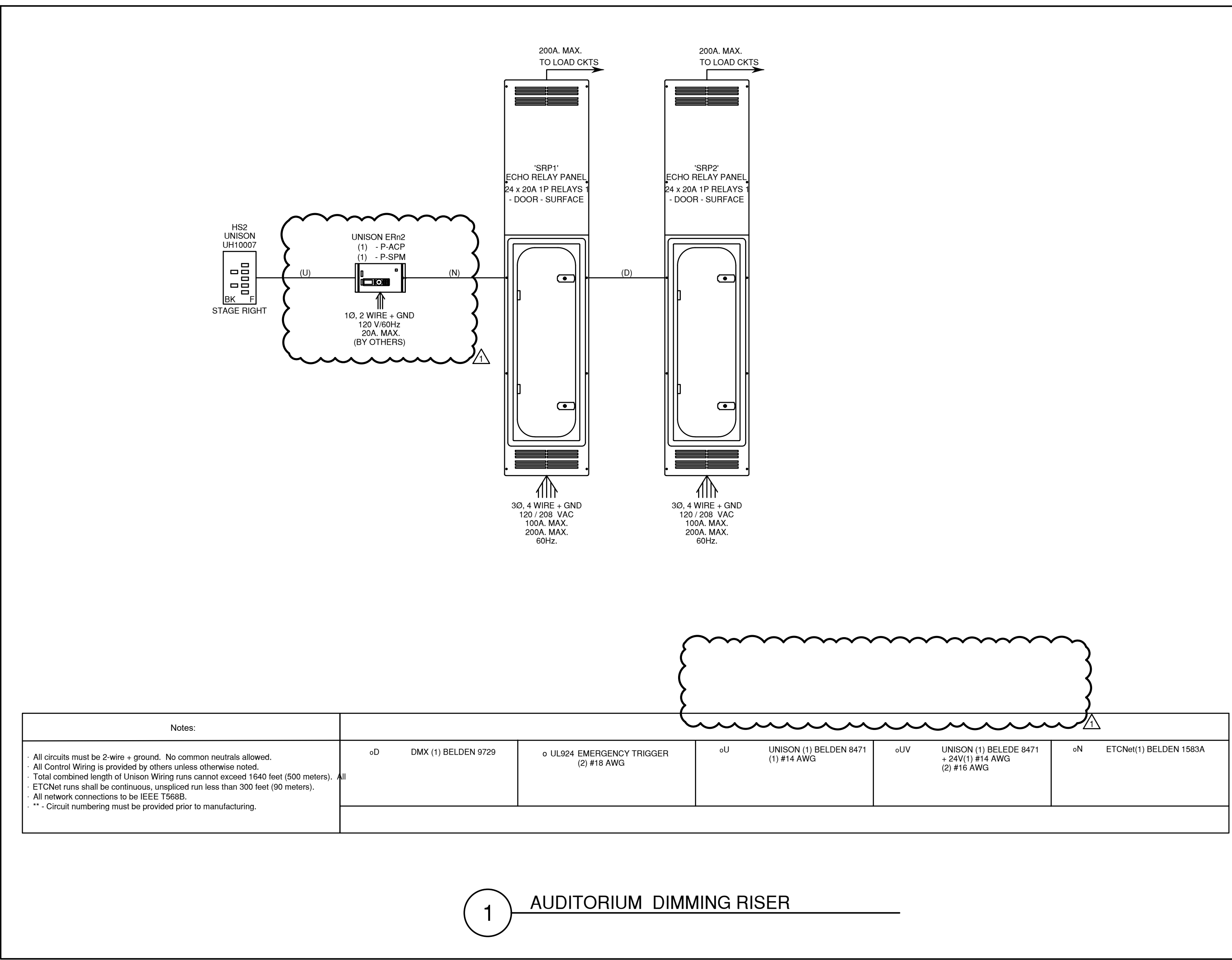
- NOTES: 1. SEE FIXTURE SCHEDULE FOR TYPE, MOUNTING AND WATTAGE. 2. HEIGHT MEASURED TO CENTER LINE OF THE BOX FROM THE FINISHED FLOOR. 3. REFER TO DRAWINGS FOR DIRECTIONAL ARROWS. 4. SUBSCRIPT INDICATES FIXTURES TO BE CONTROLLED. 5. NEMA TYPE 'ND' NON-FUSED UNLESS NOTED 'F' (FUSED). USE 'HD' 480V. 6. HEIGHT MEASURED TO TOP OF THE BOX FROM FINISHED FLOOR. 7. PROVIDE H.O.A. AND S.S. PUSHBUTTONS AS REQUIRED. 8. DOUBLE ARROWS INDICATE A DOUBLE FACE UNIT. 9. DEVICES NOTED WITH AN 'A' ADJACENT TO IT INDICATES TO COORDINATE WITH MILLWORK SHOP DRAWINGS AND ELEVATIONS FOR HEIGHT. 10. SUBSCRIPT INDICATES NEMA CONFIGURATION. 11. SOLID BOX AROUND DEVICE INDICATES INSTALLED IN FLOOR, DASHED BOX AROUND DEVICE INDICATES INSTALLED IN CEILING. 12. COORDINATE WITH DOOR HARDWARE SUPPLIER. 13. FOR WATER COOLER LOCATION, SEE DIAGRAM R002. FOR ALL OTHER LOCATIONS MOUNT AT +16" TO BOTTOM OF THE BOX FROM FINISHED FLOOR, OR AS NOTED. 14. ARROWS SHOWN ON DEVICE INDICATE THE SENSOR AIMING LOCATION. 15. CAMERA NUMBERS ARE SHOWN INSIDE THE CAMERA SYMBOL. CAMERA TYPES ARE SHOWN IN CAMERA TAGS. 16. MOUNT ON TRACK OF OVERHEAD DOOR 6" FROM TOP OF DOOR UNLESS OVERHEAD DOOR IS ROLL UP DOOR, THEN MOUNT PER MANUFACTURER'S INSTRUCTIONS. 17. INSTALL DEVICES PER MANUFACTURER'S INSTALLATION INSTRUCTIONS. 18. DASHED LINE INDICATES EQUIPMENT CLEARANCES. ARROW DENOTES FRONT OF RACK. 19. SPEAKER TO BE MOUNTED IN HORIZONTAL POSITION. 20. MOUNTING HEIGHTS IS TO BOTTOM OF DISPLAY. \*TYPICAL SYMBOL SCHEDULE. SOME SYMBOLS MAY NOT BE USED IN THIS SET OF DRAWINGS.

STANDARD MOUNTING HEIGHT UNLESS OTHERWISE NOTED ON PLANS. GENERAL table with columns: SYMBOL, DESCRIPTION, MOUNTING HEIGHT, NOTES, SYMBOL, DESCRIPTION, MOUNTING HEIGHT, NOTES.

LIGHTING table with columns: SYMBOL, DESCRIPTION, MOUNTING HEIGHT, NOTES, SYMBOL, DESCRIPTION, MOUNTING HEIGHT, NOTES.

POWER table with columns: SYMBOL, DESCRIPTION, MOUNTING HEIGHT, NOTES, SYMBOL, DESCRIPTION, MOUNTING HEIGHT, NOTES.

TELECOMMUNICATIONS table with columns: SYMBOL, DESCRIPTION, MOUNTING HEIGHT, NOTES, SYMBOL, DESCRIPTION, MOUNTING HEIGHT, NOTES.



Notes table with columns: Notes, and a table of notes for various components like DMX, UL924, and ETCNet.

1 AUDITORIUM DIMMING RISER

ABBREVIATIONS INDEX table with columns: ABBREV, DESCRIPTION, ABBREV, DESCRIPTION.

GENERAL NOTES

- 1. CONSULT ARCHITECTURAL REFLECTED CEILING PLANS FOR EXACT LOCATION OF ALL LIGHTING FIXTURES. 2. VERIFY ALL EQUIPMENT DIMENSIONS AND LOCATIONS BEFORE BEGINNING ROUGH IN. 3. CONTRACTOR SHALL VERIFY ALL ELECTRICAL LOADS, VOLTAGE, PHASE, CONNECTION REQUIREMENTS, ETC.) OF ALL EQUIPMENT FURNISHED UNDER ALL DIVISIONS, INCLUDING ALL EXISTING EQUIPMENT TO BE RE-USED. 4. SEE SECTION 265100 (H0510) OF THE SPECIFICATION REQUIRED COORDINATION MEETINGS WITH MECHANICAL AND CEILING CONTRACTORS. 5. SEE APPLICABLE SHOP DRAWINGS FOR ROUGH IN LOCATION OF ALL EQUIPMENT, WIRING DEVICES, ETC. WHERE APPLICABLE MOUNT ALL WIRING DEVICES ABOVE BACK SPLASH EXCEPT THOSE SERVING UNDER COUNTER EQUIPMENT. 6. SEE SPECIFICATION FOR ENERGY SAVING LAMP AND BALLAST REQUIREMENTS. 7. FINISHES OF ALL LIGHT FIXTURES SHALL BE AS SELECTED BY ARCHITECT. 8. THE ELECTRICAL CONTRACTOR SHALL NOTIFY AND COOPERATE WITH THE MECHANICAL CONTRACTOR SUCH THAT NO PIPING, DUCTS, OR EQUIPMENT FORBID TO THE OPERATION OF THE ELECTRICAL EQUIPMENT SHALL BE PERMITTED TO BE INSTALLED IN, ENTER OR PASS THRU ELECTRICAL ROOMS OR SPACES, OR ABOVE OR BELOW ELECTRICAL EQUIPMENT IN OTHER AREAS. 9. ELECTRICAL BOXES SHALL NOT BE LOCATED IN MASONRY COLUMNS IN BRICK WALLS OR IN GROUVED CELLS ADJACENT TO OPENINGS, COORDINATE LOCATION OF BOXES WITH MASONRY CONTRACTOR. 10. ALL PENETRATIONS OF FIRE RATED FLOORS, WALLS, AND CEILINGS SHALL BE SEALED WITH APPROVED MATERIAL TO MAINTAIN FIRE RATINGS OF SURFACE PENETRATED. 11. CONTRACTOR SHALL VERIFY FURNITURE LAYOUT PRIOR TO ANY FLOORBOX OR POKE-THRU THRU INSTALLATION. COORDINATE EXACT LOCATION OF FLOOR BOX OR POKE-THRU WITH OWNER AND FURNITURE PROVIDER PRIOR TO ROUGH-IN. 12. CIRCUITS EXTENDING OVER 70' FOR 120 VOLT AND 115' FOR 277 VOLT 20 AMP CIRCUITS SHALL BE RUN WITH CONDUITORS PER TABLE BELOW.

20 AMP MINIMUM BRANCH CIRCUIT CONDUCTOR SIZING table with columns: MAXIMUM LENGTH, BRANCH CIRCUIT VOLTAGE, CONDUCTOR LENGTH (FT), 120 VOLT, 277 VOLT.

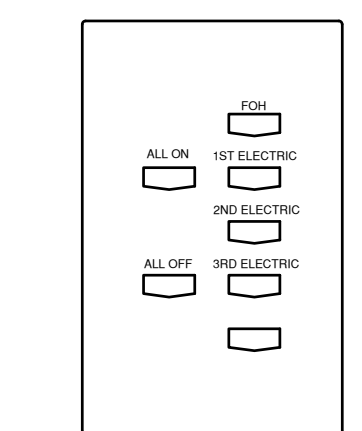
- A. THESE ARE BASED ON MAXIMUM LENGTH OF CIRCUIT. B. PERFORM VOLTAGE DROP CALCULATIONS AND PROVIDE CONDUCTOR SIZE TO KEEP BRANCH CIRCUIT VOLTAGE DROP LESS THAN 3% WITH A 15 AMP LOAD. C. CONTRACTOR SHALL ENSURE THAT THE INSTALLATION OF EACH BRANCH CIRCUIT STAYS WITHIN 3% VOLTAGE DROP FOR A 15 AMP LOAD. IF NECESSARY, CONTRACTOR SHALL INCREASE WIRE AND CONDUIT SIZE TO MEET THE STANDARD AT NO ADDITIONAL COST TO OWNER.

DEMOLITION NOTES

- 1. COORDINATE ALL NEW ELECTRICAL EQUIPMENT REQUIREMENTS AND MAKE CONNECTION TO EXISTING SYSTEMS. THIS INCLUDES LIGHTING, POWER, SIGNAL, RACEWAY AND OTHER SYSTEMS INCLUDED UNDER DIVISION 26 (16). 2. RELOCATE, REWIRE AND/OR RECONNECT EXISTING ELECTRICAL DEVICES AND/OR EQUIPMENT THAT FOR ANY REASON OBSTRUCTS CONSTRUCTION. 3. CONCEAL ALL RACEWAY AND WIRING IN EXISTING WALLS, CEILINGS, FLOORS, ETC. EXCEPT WHERE THE USE OF SURFACE METAL RACEWAYS (E.G. WIRE-MOLD) IS INDICATED ON DRAWINGS OR IN SPEC. 4. LEAVE ALL EXISTING EQUIPMENT, IN PORTIONS OF THE BUILDING NOT BEING REMODELED, IN WORKING CONDITION. RESTORE ALL INTERRUPTED BRANCH CIRCUITS, FEEDERS, ETC. TO WORKING CONDITION. 5. EXISTING RACEWAYS MAY BE REUSED (IN PLACE) WHERE POSSIBLE, AND WHERE IN COMPLIANCE WITH THE SPECIFICATIONS AND THE INTENT OF THE CONTRACT DOCUMENTS. INSURE INTEGRITY OF EXISTING RACEWAY BEFORE REUSE. 6. REMOVE ALL RACEWAYS, CONDUCTORS, BOXES, DEVICES, EQUIPMENT, ETC. THAT ARE NOT TO BE REUSED. 7. REMOVE EXISTING LIGHT FIXTURES WHICH ARE NOT TO BE REUSED. PLACE IN CARTON, LABEL APPROPRIATELY AND RETURN TO OWNER, OR PROPERLY DISPOSE OF FIXTURES THAT THE OWNER CHOOSES NOT TO KEEP. 8. DO NOT PENETRATE STRUCTURAL ELEMENTS OF FLOORS, WALLS, CEILINGS, ROOFS, ETC. 9. DISCONNECT AND RECONNECT ANY ALL FIXTURES, DEVICES, EQUIPMENT, ETC. REQUIRED FOR PROPER COMPLETION OF THE WORK.

NOTES:

- 1) USE LABELING AS INDICATED ON DIAGRAM



2 CONTROL STATION HS1

Stage Lighting Relay Panel Schedule - SRP1

Table with columns: Dimmer, Location, OLD CIRCUIT NUMBERS, Circuit #, DMX Channel, Load, Load Type, EM.

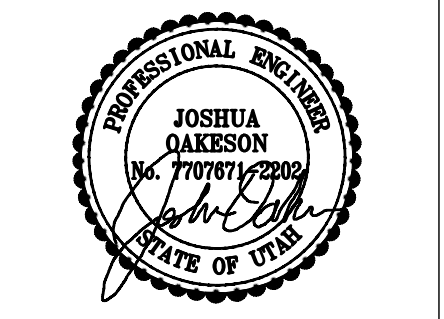
Stage Lighting Relay Panel Schedule - SRP2

Table with columns: RELAY, Location, OLD CIRCUIT NUMBERS, Circuit #, DMX Channel, Load, Load Type, EM.

DIMMER LOAD TYPE KEY table with columns: DIMMER, LOAD TYPE KEY.

DIMMER LOAD TYPE KEY table with columns: DIMMER, LOAD TYPE KEY.

MOUND FORT MIDDLE SCHOOL STAGE LIGHTING CONTROLS UPGRADE OGDEN SCHOOL DISTRICT OGDEN, UTAH



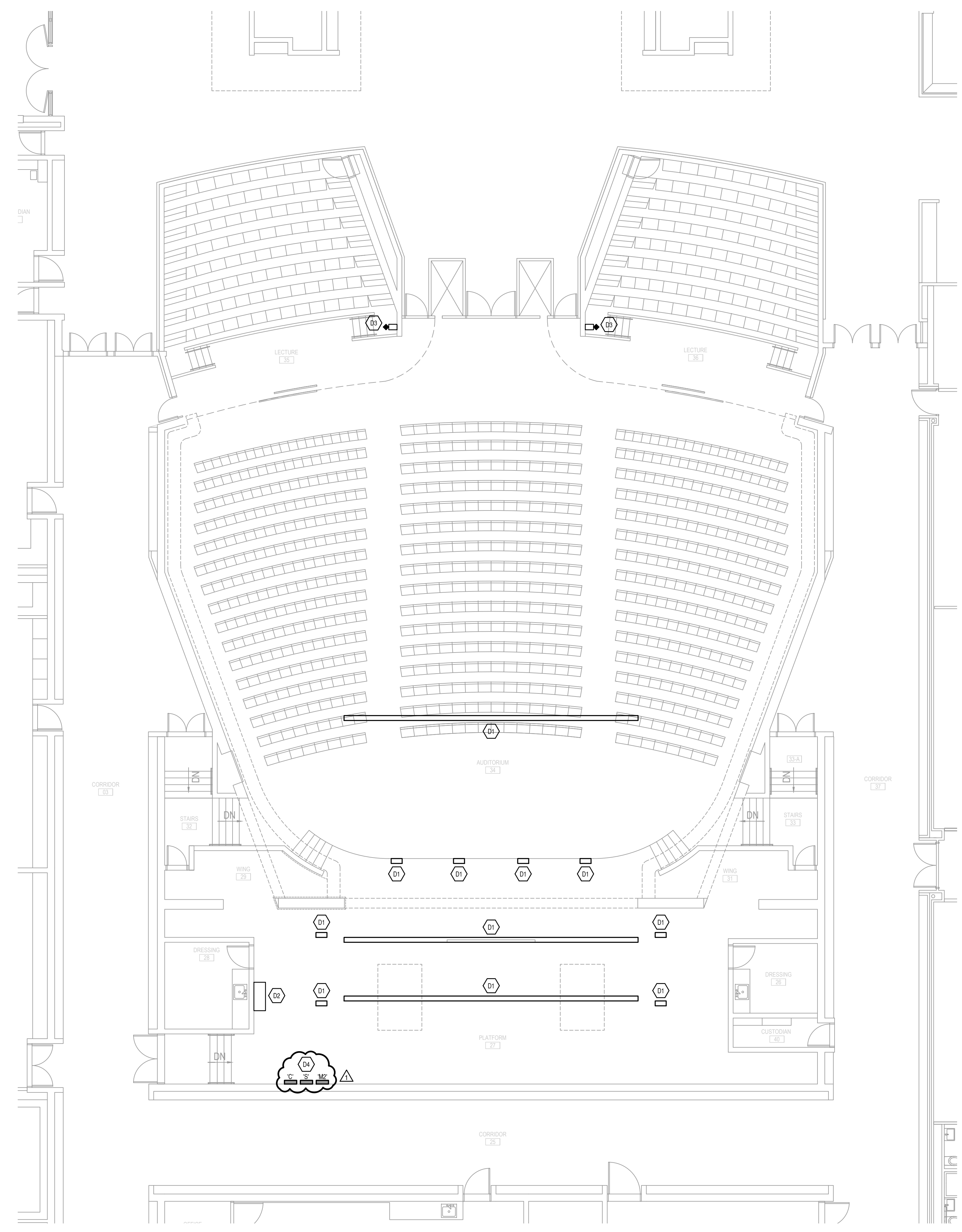
ADDENDUM/CLARIFICATION/REVISION table with columns: MARK, DATE, DESCRIPTION.

DATE: JUNE 2023 PROJECT NO: 23187 DRAWN BY: BNA CHECKED BY: RLW

SYMBOLS, SCHEDULES AND NOTES

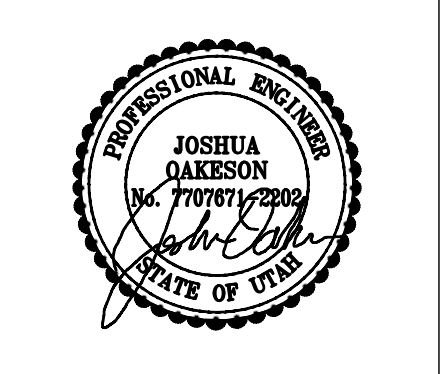
SHEET KEYNOTES	
D1	EXISTING CONNECTOR STRIPS, OUTLET BOXES AND FLOOR BOXES TO REMAIN. EXISTING WIRING TO REMAIN. REPLACE ANY BROKEN RECEPTACLES AND INSURE ALL ARE IN WORKING ORDER. CIRCUIT QUANTITIES WILL BE REUSED. RE-LABEL ALL CIRCUIT NUMBERS ON CONNECTOR STRIPS BASED ON NEW CIRCUITING.
D2	REMOVE EXISTING DIMMER RACK. EXISTING FEEDERS TO BE REUSED FOR ONE OF THE NEW RELAY PANELS. WHERE POSSIBLE THE EXISTING CONDUITS MAY BE REUSED. EXISTING FENCE ENCLOSURE AROUND DIMMER RACK TO REMAIN.
D3	EXISTING CONTROLS TO BE REMOVED AND JUNCTION BOXES COVERED.
D4	REMOVE EXISTING 350A BREAKER IN PANEL 'S'.

**BNA CONSULTING**  
 4225 Lake Park Blvd Ste 275  
 West Valley City, Utah 84120  
 P:801.532.2196  
 www.bnacconsulting.com



**ELECTRICAL DEMOLITION PLAN**  
**AUDITORIUM AREA**  
 1/8" = 1'-0"

**MOUND FORT MIDDLE SCHOOL**  
**STAGE LIGHTING CONTROLS UPGRADE**  
 OGDEN SCHOOL DISTRICT  
 OGDEN, UTAH



ADDENDUM/CLARIFICATION/REVISION		
MARK	DATE	DESCRIPTION
Δ	12/20/2023	ADDENDUM NO.1

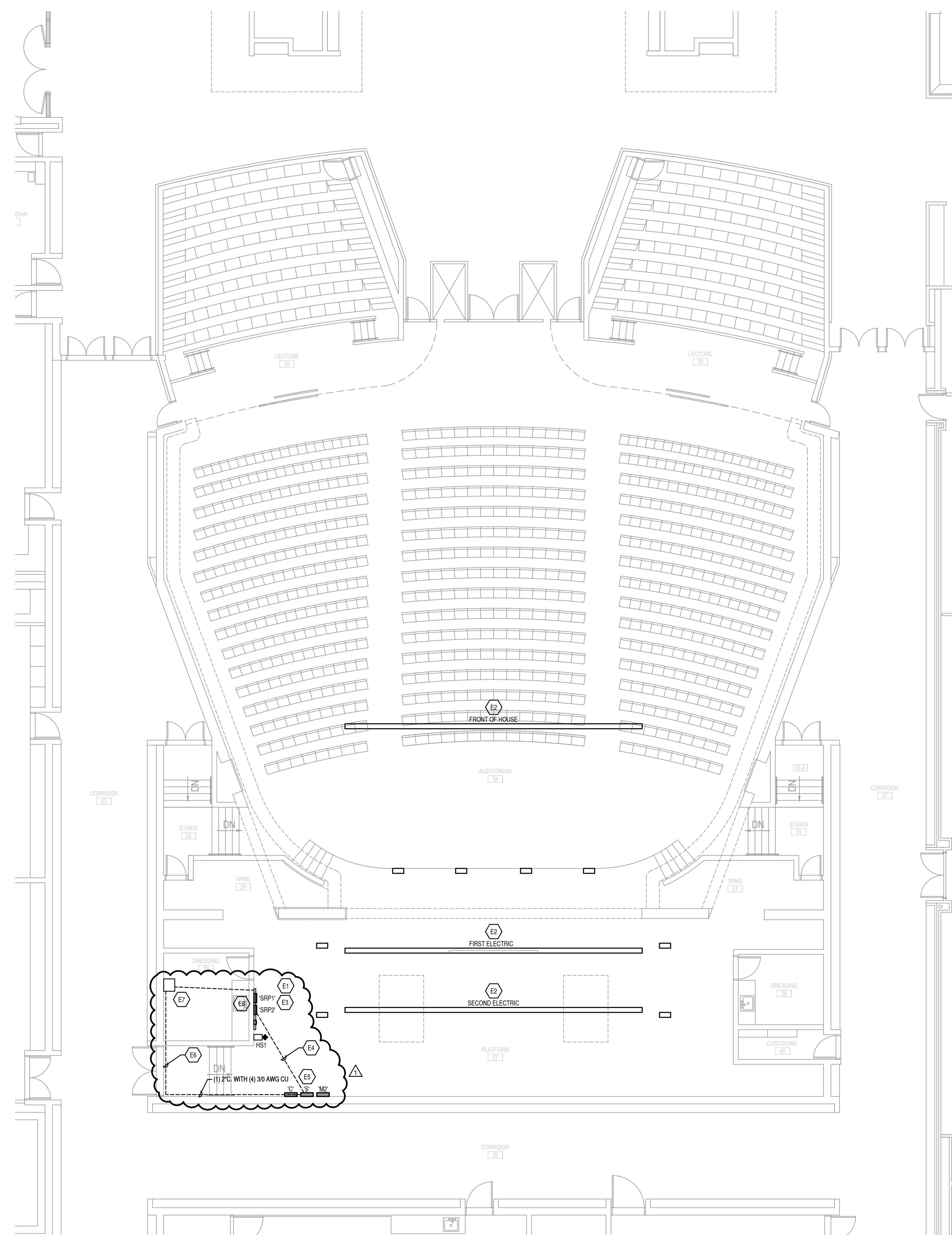
DATE: JUNE 2023  
 PROJECT NO.: 23187  
 DRAWN BY: BNA  
 CHK'D BY: RLW

**ELECTRICAL DEMOLITION PLAN**  
**AUDITORIUM AREA**

**E101**

**SHEET KEYNOTES**

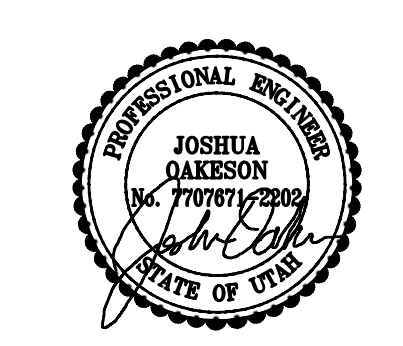
- E1 EXISTING WIRING AND RACEWAY OUT TO CONNECTOR STRIPS, WALL BOXES AND FLOOR BOXES SHALL REMAIN.
- E2 EXISTING CONNECTOR STRIPS, FLOOR BOXES AND WALL BOXES TO REMAIN. CONTRACTOR TO CHECK ALL CIRCUIT AND RECEPTACLES TO ENSURE THEY ARE IN WORKING ORDER. REPLACE ANY RECEPTACLE OR WIRING THAT IS NOT IN WORKING ORDER.
- E3 PROVIDE NEW THEATRICAL RELAY PANELS.
- E4 EXISTING FEEDERS FOR DIMMER RACK TO BE REUSED, FOR ONE OF THE NEW RELAY PANELS.
- E5 EXISTING 350A BREAKER TO BE REMOVED AND REPLACED WITH (2) 200A BREAKERS, UTILIZED EXISTING SPACE FOR NEW BREAKER.
- E6 PROVIDE NEW CONDUIT AND FEEDER FOR SECOND RELAY PANEL. CONDUITS TO BE RAN FOLLOWING THE PATH OF THE EXISTING CONDUITS FEEDING THE TRANSFORMER ABOVE THE DRESSING ROOM. IT IS POSSIBLE THAT A CRAWL SPACE EXISTS UNDERNEATH THE STAGE THAT THE CONDUIT COULD BE RAN, IF THIS IS THE CASE THE CONDUIT IS TO RAN UNDERNEATH THE STAGE.
- E7 PROVIDE A NEW PULL BOX FOR FEEDER TO RELAY PANEL, SIZE PER CODE REQUIREMENTS.
- E8 IT APPEARS THAT THE EXISTING BRANCH CIRCUITS ENTER THE DIMMER PANEL FROM BELOW. PROVIDE A GUTTER BELOW THE RELAY PANELS TO EXTEND THE BRANCH CIRCUITS.
- E9 PROVIDE ARCHITECTURAL LIGHTING CONTROLS PROCESSOR FOR LIGHTING SYSTEM. PROVIDE A 20A CIRCUIT FROM PANEL 'S' TO THE PROCESSOR.



**ELECTRICAL PLAN  
AUDITORIUM AREA**

1/8" = 1'-0" 0 4 8 16'

**MOUND FORT MIDDLE SCHOOL  
STAGE LIGHTING CONTROLS UPGRADE**  
OGDEN SCHOOL DISTRICT  
OGDEN, UTAH



ADDENDUM/CLARIFICATION/REVISION	MARK	DATE	DESCRIPTION
	△	12/20/2023	ADDENDUM NO.1

DATE:	JUNE 2023
PROJECT NO.:	23187
DRAWN BY:	BNA
CHKD BY:	RLW

**ELECTRICAL PLAN  
AUDITORIUM  
AREA**