



ADDENDUM 03

PROJECT: RFP24-012 - Ben Lomond High School Auditorium Remodel

PROJECT NUMBER: 230109

DATE: March 6, 2024

Incorporate into the Contract the following drawing & project manual revisions, and answers to questions asked during the open question period of bidding:

GENERAL

After Q5 was answered through SciQuest, it was agreed during the mandatory bid walk meeting on February 23, 2024 that a specification for Fixed Audience Seating for Theaters would, in fact, be provided.

QUESTIONS

Q1: Sheet A1.1, Alternate #2 - Will a substitutions be accepted for the auditorium seating?

A1: Substitutions that meet the same design criteria as the basis of design will be accepted.

Q2: Sheet IA1.21, Finish Schedule, MP1 - The notes note that this is by GC and to reference Sheet A2.21, Detail 10 - This detail does not exist. Are metal panels used on this project, I am not finding where it is called out?

*A2: This question will be addressed with revised drawings that will be issued as Addendum 03:
[Please see revised sheet A2.21]*

Q3: Specification Section 01 5000, 1.03, A - Will we be able to use electricity and water free of charge?

A3: Water & Power will be available, and free of charge to the contractor.

Q4: Is it anticipated that fire sprinkler modifications will be required at the new ticket booth or other locations?

A4: The ticket booth is open to above is not anticipated to require sprinkler modifications. It is not anticipated that fire sprinkler modifications will be required at other locations.

Q5: Sheet A1.1, Alternate #2 - Will a specification be provided for the auditorium seating?

*A5: At this time, a specification will not be issued for the auditorium seating
[Please see added Specification Section 12 6100 FIXED AUDIENCE SEATING FOR THEATERS]*

Q6: Specification Section 01 5000, 1.04, A - Will we be able to existing facilities or will temp. toilets be required?

A6: We will designate a restroom in the building for the contractors to use. They will not need to bring in portable toilets.

Q7: Specification Section 01 5000, 1.07, A - This notes to See Section 01 3553. This section is not included. Will security be required, if yes, what will be required?

A7: Security will not be required: the specification will be updated to remove this reference.

Q8: Specification Section 01 5000, 1.05 & 1.06 - Where will barriers an interior enclosures be required?

A8: Interior barriers will not be required: the specification will be updated to remove this reference.

Q9: Specification Section 01 5000 - Will a job trailer be required or will we be given space inside for a temp. office?

A9: A job trailer would not be required for a project this size. The contractor can set up on the stage area.

Q10: RFP, Proposal Submittal Requirements - The RFP is very specific that only 2 documents are to be submitted, the Technical Proposal and the Cost Proposal. It then notes that we have to submit a Bid Bond. Is this a 3rd document, or is it to be included in one of the 2 documents above?

A10: In the Request for Proposal Submittal Requirements we do ask for a Technical Proposal, and Cost Proposal. They must be submitted as separate attachments. In the (Other Requirements, Section B) of the RFP states a bid bond in the amount of 5% of the bid, made payable to the Ogden School District shall accompany the bid. This can be included with the Cost Proposal submission.

Q11: Sheet A1.11 - There are 4 hashed boxes up front, by the stage. What are these?

A11: The 4 hashed boxes at the front of the seating are ADA accessible seats. Revised drawings clarifying and updating the quantity and location of the ADA accessible seating will be issued in a future addendum. [Please see revised sheet A1.11]

Q12: Sheets AD1.11 & A1.11 The auditorium has carpet tile, except where the seating is. Just to confirm existing carpet will remain? Alternate #2 only occurs in the exposed floor areas, under the seats?

A12: The existing auditorium carpet will be retained and protected in Add Alternate #2

Q13: I'm trying to get a price put together for the fabric wrapped Tectum panels in the auditorium. However, there are some discrepancies with the panel dimensions. The finish schedule calls for AP1 : 4' AP2 : 6' AP3 : 8' The Specs call for AP1 : 4' AP2 : 5' AP3 : 6' Please advise.

A13: The sizes of the fabric wrapped tectum panel's indicated in the finish schedule are the correct size. The sizes indicated in the specification will be revised to match the finish schedule.

Q14: Just to confirm, for this alternate, wood wainscotting gets removed and either: Option 1 - gets framing/drywall to reflect the angled wall above, then gets paint? Option 2 - gets framing/drywall where the wainscotting was flat to the ground, acoustic wall panels then get installed on the new flat wall?

A14: Confirmed: For add alternate #4, Remove wood wainscotting. Then, for Option 1, provide new framing/drywall buildout to reflect the angles of the walls above, with the new buildout painted to match walls in add alternate #1. And, for option 2, provide new framing/drywall flat to the ground, with new acoustic barrel diffusers installed on the new flat wall.

[Please see revised sheet A1.11]

Q15: Sheet AD1.1 removes 954 seats. Sheet A1.1 adds 1,000 seats. Where are the extra 46 seat going? It appears to be the same amount of rows, are the new seats smaller?

A15: The quantity of 1,000 seats added are for bidding purposes: contractor will coordinate the final seat count, including attic stock, and final seat locations, including the quantity and location ADA accessible seating and companion seating, with the owner based on existing conditions.

[Please see revised sheet A1.11]

Q16: RFP, Proposal Submittal Requirements - Schedule B is noted to be included in the Cost Proposal. There is a Schedule A in the RFP packet. It is not noted in either attachment. Is it to be included? If yes, where?

A16: Include Schedule A with the cost proposal as well

Q17: Can you provide a specification to the "AUDITORIUM" signage? Material, finish, size, etc.?

A17: "AUDITORIUM" Signage is to be 20" Tall Brushed/Natural Satin finish Aluminum Letters that are ¼" Thick and attached with a ¼" standoff. Contractor will field verify actual size, finish, and attachment and

coordinate new signage to match existing signage. A sample will be required as part of the construction submittal.

[Please see revised sheet A2.21]

GENERAL DRAWING CHANGES

None

ARCHITECTURAL DRAWING CHANGES

CS COVER SHEET

- Index of Drawings: **Added** revision information to index

AD1.11 DEMOLITION FLOOR PLAN - AUDITORIUM

- Drawing Legend: **Added** symbol and description for existing floor finish to be removed, retained & protected, and reinstalled

AD1.12 DEMOLITION FLOOR PLANS - ASSOCIATED SUPPORT SPACES

- Keynotes: **Revised** text of keynote #16
- Keynotes: **Added** keynote #18
- Drawing Legend: **Added** symbol and description for existing floor finish to be removed, retained & protected, and reinstalled
- Drawing B 'Demolition Plan – Sound Booth': **Added** hatch pattern to indicate removal, retention & protection, and reinstallation of existing floor finish around ticket booth.
- Drawing B 'Demolition Plan – Sound Booth': **Added** missing keynote tags

A1.11 FLOOR PLAN - AUDITORIUM

- Keynotes: **Added** keynote #9
- Add Alt #2 Auditorium Seating: **Revised** narrative to clarify design intent based on bid questions
- Add Alt #4 Auditorium Sidewall: **Revised** narrative to clarify design intent based on bid questions
- Drawing A 'Floor Plan - Auditorium': **Revised** detail number
- Drawing A 'Floor Plan - Auditorium': **Added** keynote #9 to drawings
- Drawing A 'Floor Plan - Auditorium': **Added** ADA accessible and companion seating to drawings

A1.12 FLOOR PLANS - ASSOCIATED SUPPORT SPACES

- Drawing A 'Floor Plan – Ticket Booth': **Added** section callout tag

A1.21 REFLECTED CEILING PLAN - AUDITORIUM

- Keynotes: **Added** keynote #2
- Add Alt #1 Auditorium Painting: **Added** narrative to clarify design intent
- Drawing A 'Reflected Ceiling Plan – Auditorium': **Revised** extents of section callout tag
- Drawing A 'Reflected Ceiling Plan – Auditorium': **Added** keynote #2

A2.21 ELEVATIONS – TICKET BOOTH

- Keynotes: **Added** keynote #3
- Drawing 1 'Ticket Booth Elevation – North': **Added** keynote #3
- Drawing 1 'Ticket Booth Elevation – North': **Added** material tag 'MP1'
- Drawing 2 'Ticket Booth Elevation – East': **Revised** storefront system 'W2'
- Drawing 4 'Ticket Booth Elevation – West': **Revised** storefront system 'W2'

A3.11 SECTIONS

- Finish Legend: **Updated** graphics of finish legend
- Drawings 1 'Section – Auditorium': **Updated** extents of painting

A4.02 WALL TYPES, SECTIONS, & TYPICAL DETAILS

- Drawing 2 'Ticket Booth Section – Wall Section thru Storefront: **Updated** text note reference
- Drawing 3 'Ticket Booth Section – Wall Section @ Ticket Counter': **Updated** wall section detail
- Drawing 5 'Diagonal Cross Bracing Detail': **Added** drawing to sheet

A6.01 DOOR SCHEDULE, DOOR & WINDOW TYPES, & DETAILS

- Window Systems Types: **Updated** dimensions and notes of wall type 'W1'

PROJECT MANUAL

00 0110 TABLE OF CONTENTS

- **Revised** specification section 01 0110 TABLE OF CONTENTS in Project Manual

01 5000 TEMPORARY FACILITIES AND CONTROLS

- **Revised** specification section 01 5000 TEMPORARY FACILITIES AND CONTROLS in Project Manual

09 8400 ACOUSTIC WALL PANELS

- **Revised** specification section 09 8400 ACOUSTIC WALL PANELS in Project Manual

12 6100 FIXED AUDIENCE SEATING FOR THEATERS

- **Added** specification section 12 6100 FIXED AUDIENCE SEATING FOR THEATERS to Project Manual

END OF WRITTEN RESPONSE



Mark D. Pavoni, AIA, NCARB

Attachments:

CS COVER SHEET

AD1.11 DEMOLITION FLOOR PLAN - AUDITORIUM

AD1.12 DEMOLITION FLOOR PLANS - ASSOCIATED SUPPORT SPACES

A1.11 FLOOR PLAN - AUDITORIUM

A1.12 FLOOR PLANS - ASSOCIATED SUPPORT SPACES

A1.21 REFLECTED CEILING PLAN - AUDITORIUM

A2.21 ELEVATIONS – TICKET BOOTH

A3.11 SECTIONS

A4.02 WALL TYPES, SECTIONS, & TYPICAL DETAILS

A6.01 DOOR SCHEDULE, DOOR & WINDOW TYPES, & DETAILS

00 0110 TABLE OF CONTENTS

01 5000 TEMPORARY FACILITIES AND CONTROLS

09 8400 ACOUSTIC WALL PANELS

12 6100 FIXED AUDIENCE SEATING FOR THEATERS

TABLE OF CONTENTS

DIVISION 00 – PROCUREMENT AND CONTRACTING REQUIREMENTS

00 0110 TABLE OF CONTENTS

DIVISION 01 – GENERAL REQUIREMENTS

01 1000 SUMMARY OF WORK
01 2300 ALTERNATES
01 3000 ADMINISTRATIVE REQUIREMENTS
01 3216 CONSTRUCTION PROGRESS SCHEDULE
01 4000 QUALITY REQUIREMENTS
01 4216 DEFINITIONS
01 5000 TEMPORARY FACILITIES AND CONTROLS
01 5721 INDOOR AIR QUALITY CONTROLS
01 6000 PRODUCT REQUIREMENTS
01 7000 EXECUTION AND CLOSEOUT REQUIREMENTS
01 7800 CLOSEOUT SUBMITTALS

DIVISION 02 – EXISTING CONDITIONS

02 4100 DEMOLITION

DIVISION 06 – WOOD, PLASTICS, AND COMPOSITES

06 4116 PLASTIC LAMINATE-FACED ARCHITECTURAL CABINETS

DIVISION 07 – THERMAL AND MOISTURE PROTECTION

07 2100 THERMAL INSULATION
07 9005 JOINT SEALANTS

DIVISION 08 – OPENINGS

08 1113 HOLLOW METAL DOORS AND FRAME
08 1416 FLUSH WOOD DOORS
08 4313 ALUMINUM-FRAMED STOREFRONTS
08 7100 DOOR HARDWARE
08 8000 GLAZING

DIVISION 09 – FINISHES

09 2216 NON-LOAD-BEARING WALL FRAMING
09 2900 GYPSUM BOARD ASSEMBLIES
09 3013 CERAMIC TILING
09 6500 RESILIENT FLOORING
09 6519 LVT RESILIENT FLOORING
09 8400 ACOUSTIC WALL PANELS
09 9000 PAINTING AND COATING
09 9600 HIGH PERFORMANCE COATINGS

TABLE OF CONTENTS

DIVISION 10 – SPECIALTIES

10 2800 WASHROOM ACCESSORIES

DIVISION 12 – FURNISHINGS

12 3600 COUNTERTOPS
12 6100 FIXED AUDIENCE SEATING FOR THEATERS

DIVISION 26 – ELECTRICAL

26 0500 ELECTRICAL GENERAL PROVISIONS
26 0502 ELECTRICAL SUBMITTALS AND SPARE PARTS
26 0507 ELECTRICAL CONNECTIONS FOR EQUIPMENT
26 0519 CONDUCTORS AND CABLES
26 0526 GROUNDING
26 0529 SUPPORTING DEVICES
26 0532 CONDUIT RACEWAYS
26 0533 ELECTRICAL BOXES AND FITTINGS
26 0548 ELECTRICAL SEISMIC CONTROL
26 0553 ELECTRICAL IDENTIFICATION
26 0923 OCCUPANCY SENSORS
26 2726 WIRING DEVICES
26 2815 OVERCURRENT PROTECTIVE DEVICES
26 4119 DEMOLITION
26 5100 INTERIOR AND EXTERIOR BUILDING LIGHTING
26 5561 STAGE LIGHTING & DIMMING SYSTEM

DIVISION 27 – COMMUNICATIONS

27 1500 TELEPHONE DATA SYSTEMS
27 4100 AUDIOVISUAL SYSTEMS

DIVISION 28 – ELECTRONIC SAFETY AND SECURITY

28 3111 FIRE ALARM AND DETECTION SYSTEM

SECTION 01 5000
TEMPORARY FACILITIES AND CONTROLS

PART 1 GENERAL

1.01 SECTION INCLUDES

- A. Temporary utilities.
- B. Temporary sanitary facilities.
- C. Vehicular access and parking.
- D. Waste removal facilities and services.
- E. Project identification sign.
- F. Removal of Utilities, Facilities, and Controls

1.02 TEMPORARY UTILITIES

- A. Water and Power will be available, and free of charge to the contractor.
- B. Use trigger-operated nozzles for water hoses, to avoid waste of water.

1.03 TEMPORARY SANITARY FACILITIES

- A. A restroom will be designated in the building for the contractors to use. Contractor will not need to bring in portable toilets.

1.04 VEHICULAR ACCESS AND PARKING

- A. Coordinate access and haul routes with governing authorities and Owner.
- B. Provide and maintain access to fire hydrants, free of obstructions.
- C. Provide means of removing mud from vehicle wheels before entering streets.
- D. Provide temporary parking areas to accommodate construction personnel. When site space is not adequate, provide additional off-site parking.

1.05 WASTE REMOVAL

- A. Provide waste removal facilities and services as required to maintain the site in clean and orderly condition.
- B. Provide containers with lids. Remove trash from site periodically.
- C. If materials to be recycled or re-used on the project must be stored on-site, provide suitable non-combustible containers; locate containers holding flammable material outside the structure unless otherwise approved by the authorities having jurisdiction.
- D. Open free-fall chutes are not permitted. Terminate closed chutes into appropriate containers with lids.

1.06 PROJECT IDENTIFICATION

- A. Contractor may provide and install one Contractor's identification sign, 48 s.f. maximum, at location approved by Architect/Owner.
- B. Contractor shall install Architect's provided identification sign, 48 s.f., at location approved by Architect/Owner.
- C. No other signs are allowed without Owner permission except those required by law.

1.07 REMOVAL OF UTILITIES, FACILITIES, AND CONTROLS

- A. Remove temporary utilities, equipment, facilities, materials, prior to Substantial Completion inspection.
- B. Remove underground installations to a minimum depth of 2 feet (600 mm).
- C. Clean and repair damage caused by installation or use of temporary work.

PART 2 PRODUCTS - NOT USED
PART 3 EXECUTION - NOT USED

END OF SECTION

**SECTION 09 8400
ACOUSTIC WALL PANELS**

PART 1 GENERAL

1.01 RELATED DOCUMENTS

- A. Drawings and general conditions of Contract, including General and Supplementary Conditions and Divisions-1 Specification sections apply to work of this section.

1.02 SUMMARY

A. Section Includes:

- 1. Cementitious wood fiber plank acoustical wall system

B. Related Sections:

- 1. Section 09 20 00 – Plaster and Gypsum Board
- 2. Section 01 81 13 – Sustainable Design Requirements
- 3. Section 01 81 19 – Indoor Air Quality Requirements

1.03 REFERENCES

A. American Society for Testing and Materials (ASTM)

- 1. ASTM D 3273 Standard Test Method for Resistance to Growth of Mold on the Surface of Interior Coatings in an Environmental Chamber
- 2. XASTM E 84 Standard Test Method for Surface Burning Characteristics of Building Materials
- 3. ASTM E 580 Installation of Metal Suspension Systems in Areas Requiring Moderate Seismic Restraint
- 4. ASTM C 423 Sound Absorption and Sound Absorption Coefficients by the Reverberation Room Method
- 5. ASTM E 1264 Classification for Acoustical Ceiling Products

B. International Building Code

C. ASHRAE Standard 62.1-2004, "Ventilation for Acceptable Indoor Air Quality"

D. NFPA 70 National Electrical Code

1.04 SUBMITTALS

- A. Product Data: Submit manufacturer's technical data for each type of Fabric walls required.
- B. Samples: Minimum 6 inch x 6 inch samples of specified Tectum® Fabric acoustical panel.
- C. Shop Drawings: Layout and details of Tectum® Fabric walls show locations of items that are to be coordinated with, or supported by the walls.
- D. Certifications: Manufacturer's certifications that products comply with specified requirements, including laboratory reports showing compliance with specified tests and standards. For acoustical performance, products must be tested to the A, D-20, or C-40 method; each carton of material must carry an approved independent laboratory classification.
- E. If the material supplied by the acoustical subcontractor does not conform to manufacturer's current published values as specified in 2.2 of this specification, the material must be removed, disposed of, and replaced with complying product at the expense of the Contractor performing the work.

1.05 QUALITY ASSURANCE

- A. Single-Source Responsibility: Provide acoustical panel units and grid components by a single manufacturer.
- B. Fire Performance Characteristics: Identify acoustical wall components with appropriate markings of applicable testing and inspecting organization.
 - 1. Surface Burning Characteristics: Tested per ASTM E 84 and complying with ASTM E 1264 Classification.

- C. Tectum® Fabric, as with other architectural features located at the wall, may obstruct or skew the planned fire sprinkler water distribution pattern through possibly delay or accelerate the activation of the sprinkler or fire detection systems by channeling heat from a fire either toward or away from the device. Designers and installers are advised to consult a fire protection engineer, NFPA 13, or their local codes for guidance where automatic fire detection and suppression systems are present.
- D. Coordination of Work: Coordinate acoustical wall work with installers of related work including, but not limited to building insulation, gypsum board, light fixtures, mechanical systems, electrical systems, and sprinklers.

1.06 DELIVERY, STORAGE & HANDLING

- A. Deliver acoustical wall units to project site in original, unopened packages and store them in a fully enclosed space where they will be protected against damage from moisture, direct sunlight, surface contamination, and other causes.
- B. Provide labels indicating brand name, style, size and thickness.
- C. Before installing acoustical wall units, permit them to reach room temperature and a stabilized moisture content.
- D. Handle acoustical wall units carefully to avoid chipping edges or damaged units in any way.

1.07 ENVIRONMENTAL REQUIREMENTS:

- A. Do not install wall panels until building is closed in and HVAC system is operational.
- B. Locate materials onsite at least 24 hours before beginning installation to allow materials to reach temperature and moisture content equilibrium.
- C. Maintain the following conditions in areas where acoustical materials are to be installed 24 hours before, during and after installation:
 - 1. Relative Humidity: 65 - 75%.
 - 2. Uniform Temperature: 55 - 70 degrees F (13 - 21 degrees C).

1.08 WARRANTY:

- A. Fabric Panels: Submit a written warranty executed by the manufacturer, agreeing to repair or replace panels that fail within the warranty period. Failures include, but are not limited to the following:
 - 1. Fabric Wall Panels: Sagging and warping
- B. Fabric Wall Panels one source manufacturer is Thirty (30) years from date of substantial completion.
- C. The Warranty shall not deprive the Owner of other rights the Owner may have under other provisions of the Contract Documents and will be in addition to and run concurrent with other warranties made by the Contractor under the requirements of the Contract Documents

1.09 MAINTENANCE:

- A. Extra Materials: Deliver extra materials to Owner. Furnish extra materials described below that match products installed. Packaged with protective covering for storage and identified with appropriate labels.
 - 1. Fabric Custom Wall Panels: Furnish quality of full-size units equal to 5.0 percent of amount installed.

PART 2 PRODUCTS

2.01 MANUFACTURER

- A. Fabric Custom Wall Panels:
 - 1. Tectum® by Armstrong World Industries, Inc.

2.02 FABRIC CUSTOM WALL PANELS

- A. Acoustical Panels Type AP-1:
 - 1. Surface Texture: Coarse
 - 2. Composition: Aspen wood fibers bonded with inorganic hydraulic cement

3. Fabric: (Custom: refer to manufacturer website for fabric selection)
4. Size: Custom Sizes (width 24", length 48")
5. Thickness: (2")
6. Edge Profile: Beveled
7. Noise Reduction Coefficient (NRC): ASTM C 423 ; (Mounting; C-40(0.90))

B. Acoustical Panels Type AP-2:

1. Surface Texture: Coarse
2. Composition: Aspen wood fibers bonded with inorganic hydraulic cement
3. Fabric: (Custom: refer to manufacturer website for fabric selection)
4. Size: Custom Sizes (width 24", length 72")
5. Thickness: (2")
6. Edge Profile: Beveled
7. Noise Reduction Coefficient (NRC): ASTM C 423 ; (Mounting; C-40(0.90))

C. Acoustical Panels Type AP-3:

1. Surface Texture: Coarse
2. Composition: Aspen wood fibers bonded with inorganic hydraulic cement
3. Fabric: (Custom: refer to manufacturer website for fabric selection)
4. Size: Custom Sizes (width 24", length 96")
5. Thickness: (2")
6. Edge Profile: Beveled
7. Noise Reduction Coefficient (NRC): ASTM C 423 ; (Mounting; C-40(0.90))

PART 3 EXECUTION

3.01 EXAMINATION

- A. Do not proceed with installation until all wet work such as concrete, terrazzo, plastering and painting has been completed and thoroughly dried out, unless expressly permitted by manufacturer's printed recommendations.

3.02 PREPARATION

- A. Measure each wall area and establish layout of acoustical wall units, and comply with reflected wall plans. Coordinate panel layout with mechanical and electrical fixtures.
- B. Coordination: Furnish layouts for preset inserts, clips, and other wall anchors whose installation is specified in other sections.

3.03 INSTALLATION

- A. Install Fabric Custom Wall Panels in accordance manufacturer's installation instructions.
- B. Fabric Custom Wall Panels must be mechanically attached to approve substrate per installation instructions.

3.04 ADJUSTING AND CLEANING

- A. Replace damaged and broken Tectum® Fabric Wall Panels.
- B. Clean exposed surfaces of acoustical walls, including trim, edge moldings, and suspension members. Comply with manufacturer's instructions for cleaning and touch up of minor finish damage. Remove any Tectum® Fabric Wall Panels that cannot be successfully cleaned and or repaired. Replace with attic stock or new product to eliminate evidence of damage.

END OF SECTION

SECTION 12 6100
FIXED AUDIENCE SEATING FOR THEATERS

PART 1 GENERAL SPECIFICATIONS

1.01 SUMMARY:

- A. Deliver and install approximately 1,000 fixed padded and upholstered chairs as specified, floor mounted standards, with self-lifting seat that rises to a uniform 3/4-safety fold position.

1.02 SUBMITTALS:

- A. Product data for each chair model specified to include construction details, material descriptions and finish options
- B. Seating layout (shop drawings) developed from the contract drawings that show aisle widths, chair spacing for each row, row-lettering and chair-numbering scheme, chair dimensions and back pitch. Layout drawings to also include locations for accessories, including left- and right-hand tablet arms, electrical devices, accessibility provisions and attachments to other work.
- C. Samples for verification & finish selection to include:
 - 1. Initial finish selections to be made from manufacturer's standard color and fabric guides.
 - 2. Final powder coat selection to be approved from manufacturers standard-sized samples not less than 1" x 3".
 - 3. Final laminate selection to be approved from manufacturers standard-sized samples not less than 2" x 2".
 - 4. Final plastic color selection to be approved from manufacturers standard-sized samples not less than 2" x 3".
 - 5. Final wood finish selection to be approved from manufacturers standard-sized samples not less than 4" x 3".
 - 6. Final upholstery fabric selection to be approved from fabric mills standard swatch size if available.
- D. Maintenance instructions and inspection guidelines furnished for each chair model specified.
- E. Manufacturers standard warranty.

1.03 QUALITY ASSURANCE:

- A. Source Limitations:
 - 1. Obtain each type of fixed seating required, including accessories and mounting components, from a single manufacturer.
 - 2. Obtain fabric of a single dye lot for each color and pattern of fabric required except when yardage requirement exceeds maximum dye lot. Multiple dye lots shall be color matched for quality assurance.
- B. Fire Performance Characteristics of Upholstered Seating:
 - 1. Fabric shall be Class 1 according to DOC CS 191 and 16 CFR 1610.61, tested according to California Technical Bulletin 117.
 - 2. Padding shall comply with California Technical Bulletin 117.

1.04 PROJECT CONDITIONS:

- A. Environmental Limitations:
 - 1. Do not deliver or install seating until spaces are enclosed and weather tight, wet work in spaces is complete and dry, work above ceilings is complete, and temporary or permanent HVAC system is operating and maintaining ambient temperature and humidity at occupancy levels during the remainder of the construction period.
- B. Field Measurements:

1. Take field measurements to verify or supplement dimensions indicated on contract drawings prior to manufacturing.

1.05 PROJECT COORDINATION:

- A. Do not deliver or install seating until space is free of lifts and/or scaffolding used by other trades which may interfere with installation and/or damage seating.
- B. Coordinate layout and installation of electrical wiring and devices with electrical contractor to ensure that floor junction boxes for electrical devices are accurately located for final connection to the building's power supply by the electrical contractor.
- C. Coordinate layout and installation of seating with HVAC contractor to ensure that vents are located in a manner that will not interfere with seating installation.
- D. Coordinate substrate requirements needed for proper installation.

1.06 WARRANTY:

- A. Provide a manufacturer's warranty covering the material and workmanship for the specified warranty period from date of final acceptance.
- B. Warranty Periods:
 1. Structural Components: five years.
 2. Operating Mechanisms: five years.
 3. Plastic, Wood and Painted Components: five years.
 4. Upholstery Fabric: one year.
 5. Electrical Components: one year.

PART 2 PRODUCTS

2.01 MATERIALS AND FINISHES:

- A. Steel shall meet requirements for ASTM A 36/A 36M plates, shapes, and bars; ASTM A 513 mechanical tubing; ASTM A 1008/A 1008M cold-rolled sheet; and ASTM A 1011 hot-rolled sheet and strip.
- B. Cast Iron shall meet requirements for ASTM A 48/A 48M, Class 25, gray iron castings free of blow holes and hot checks with parting lines ground smooth.
- C. Cast Aluminum shall meet requirements for ASTM B 85 aluminum-alloy die castings.
- D. All exposed metal parts shall be powder coated with a hybrid thermosetting powder coat finish. The powder coat finish shall be applied by electrostatic means to a thickness of 2 - 5 mils, and shall provide a durable coating having a 2H Pencil hardness. Prior to powder coating, metal parts shall be treated with a three-stage non-acidic, bonderizing process for superior finish adhesion, and after coating shall be oven baked to cause proper flow of the epoxy powder to result in a smooth, durable finish. Manufacturer's standard color range shall be used.
- E. Medium-density fiberboard shall meet requirements for ANSI A208.2, Grade MD, made with binder containing no urea formaldehyde.
- F. Concealed plywood shall meet requirements for HPVA HP-1 hardwood plywood.
- G. Exposed plywood shall meet requirements for HPVA HP-1, Face Grade A, hardwood veneer core with color-matched hardwood-veneer faces, made with adhesive containing no urea formaldehyde.
- H. Hardwood lumber and veneer faces shall be maple selected to be free of visible defects. Exposed wood shall be sanded smooth and stained to color selected with low-VOC water-based stain and top coat to provide with a high quality finish. Color to be chosen from manufacturer's standard offering.
- I. Upholstery fabric shall be 100% pre-consumer recycled polyester Open House pattern by Guilford of Maine. Fabric shall have a weight of 12.4 oz. per lineal yard (\pm 1 oz.). Fabric shall meet specifications AATCC 16 Option 3, AATCC 107 and AATCC 8 for color fastness and withstand 250,000 double rubs per ASTM D-4157. Fabric shall meet flammability resistance outlined in California Technical Bulletin 117; NFPA 260-1989, Class 1; UFAC, class 1.

- J. Upholstery padding shall be molded or slab polyurethane foam.
- K. Molded Plastics:
 - 1. Structural components shall be mar and dent resistant high density glass-filled polypropylene with UV stabilizers.
 - 2. Decorative components shall be mar and dent resistant high density polyethylene (HDPE) with UV stabilizers.
 - 3. Plastic components shall be chosen from manufacturer's standard offering.

2.02 FIXED AUDIENCE SEATING:

- A. Permanent arrangement of fixed audience seating as shown on seating layout drawings.
 - 1. Approved manufacturers subject to compliance with requirements outlined herein.
 - 2. Basis-of-design for fixed audience seating is Irwin Seating Company model 90.12.10.4 Citation or comparable product:
- B. Chair support columns shall be a formed 14 gauge (.0747") steel tube with an integral back wing plate. Column shall exhibit a 10° rearward incline to help conceal back attachment hardware. Brackets for seat attachment shall be 7-gauge (.1875") steel for superior strength, formed with an integral support buttress. Floor attachment foot shall be formed from 12 gauge (.105) steel to 7-1/2" x 2-5/8" in size. All steel components shall be robotic welded for precise assembly and exceptional integrity. Foot-to-column welds are to be concealed on the inside of the foot for a clean appearance. The standard shall be fabricated to be compatible with the floor incline, and to maintain proper seat and back height and angle.
- C. Aisle end panels shall be injection molded glass-filled polypropylene and enclose the upper 2/3 of the support column. Panels are teardrop-shaped with a concave rear edge and well-rounded surfaces around a center area, which features a veneer surfaced insert.
- D. Backs shall be rectangular shaped, padded and upholstered on their face, with a one-piece injection molded polymer rear panel. The foundation of the back component shall be provided by a 7/16" thick, 5-ply hardwood inner panel that shall also serve as the upholstery substrate. The face of the back shall be upholstered over a 2" thick polyurethane foam pad. The polyfoam pad shall be securely cemented to the plywood inner panel and upholstered with a 1-piece cover securely fastened to the hardwood inner panel by means of upholstery staples to facilitate ease of re-upholstering. The rear designer panel shall be injection molded HDPE plastic, high impact-resistant, with textured outer surface, formed to enclose the edges of the inner upholstery panel at the top and both sides of the back, and shall be not less than 25" in length, extending down to the rear of the seat. There shall be no exposed screws above the armrests. Wings used for the attachment of the complete back assembly to the standards shall be not less than 14 gauge (.0747") steel. Wings shall be firmly secured to the inner panel through the use of threaded t-nuts fastened to the inner panel. Assembled chair shall have a nominal back height of 34". The back assembly shall be certified through routine ISO testing to withstand a 250 lb. static load test applied approximately 16" above the seat assembly and a 100,000 cycle 40 lb. swing impact test.
- E. Seats shall be padded and upholstered on their top surface with a structural, injection molded polypropylene seat foundation. Seats shall self-rise to a uniform position when unoccupied. The mechanism shall be certified through routine ISO testing to exceed 300,000 cycles during ASTM Designation F851-87 Test Method for Self-Rising Seat Mechanism. In addition, the seat shall withstand as a 600 lb. static load test applied approximately 3" from the front edge of the seat assembly and a 50,000 cycles 125 lb. vertical drop impact test.
 - 1. Seat foundation shall be engineered glass-filled, injection molded polypropylene, strengthened by deep internal ribs and gussets, completely enclosing the self-rising hinge mechanism. Bottom surface of the foundation shall be textured and feature an attractive molded recess. Bolted attachment of the seat assembly to the chair standard shall be concealed by an integral color-coordinated plastic cap to present a finished, refined appearance.
 - 2. When unoccupied, the seat shall rise automatically to a 3/4 safety fold position, and upon a slight rearward pressure, shall achieve full-fold, allowing the patron additional passing room. The seat shall rotate on two, molded acetal shafts supported by nylon bearings with integral

- down-stops for exceptional strength. Seat-lift shall be accomplished by compression springs and self-lubricating plastic cams.
3. The base structure for the cushion assembly shall be five serpentine springs locked to an engineered, glass-filled polypropylene frame. Serpentine springs are covered with 3-1/2" thick molded polyurethane foam. Cushion is molded with an integral chafing barrier to protect the foam from the serpentine springs and a waterfall leading edge. Cushion assembly is upholstered with a carefully tailored fabric cover secured around the perimeter of the cushion frame by means of a drawstring and staples and securely locked to the seat foundation, preventing unauthorized removal; but facilitating convenient access by trained maintenance personnel.
- F. Chair width shall be 21" from center to center of armrests.
- G. Back height and pitch shall be fixed as shown on seating layout drawings.
- H. Center standards shall be provided with a glass-filled polypropylene armrest support structure capable of surpassing a 200 lb. vertical static load test applied 3" from the front edge of the armrest. Armrest support shall be attached to the support column with an integral ribbed post that binds into the steel support column and locked in place with a concealed security screw. Support structure is capped with a curved solid wood armrest attached with concealed hardware. Aisle end armrests are to be attached to the 14-gauge aisle panel bracket with concealed hardware.
- I. Row-lettering and chair-numbering shall be provided for identification of all chairs as shown on approved seating layout drawings. Number plates shall be 5/8" x 1-5/8" aluminum with a bronze finish and black sans serif numerals. The seat pans shall be recessed at the center of the front edge for the number plates, and attached by two (2) pop rivets. Letter plates shall be 2" round with a bronze finish and black sans serif numerals attached in recess of aisle standard decorator panel by two (2) pop rivets. Attaching hardware shall have a finish compatible to plates.
- J. Aisle lights shall be furnished for aisle standards designated on the approved seating layout drawings. Aisle lights shall be low voltage, non-hazardous 12 volt, D.C. Fixtures shall be mounted to the top rear of the glass-filled polypropylene aisle panel to provide illumination of the aisle panel and adjacent floor and/or steps. Fixtures are 2-1/4" diameter black hooded assemblies with high-output, light emitting diodes (LED) designed to provide an even, consistent wash of white illumination. The aisle light standards are to be provided pre-wired with approximately 18" of wiring extending beyond the base of the standards. Wiring shall be encased within a black, rubber-coated flex steel conduit that exits the column just above the foot. Seating supplier shall furnish as part of the aisle light package a voltage reduction device suitable for conversion of 120 volt, A.C., facility power to 12 volt, D.C., for aisle lights requirement. The voltage reduction device shall be Underwriters' Laboratories listed as a Class II Power Unit for proper supply of power to the aisle lights. All wiring connections from the electric distribution system to the aisle light standards, as well as installation, proper safe mounting, and connection of the voltage reduction device, shall be the responsibility of the electrical contractor, including provision of suitable locking-style electrical disconnect device.
- K. Accessible Seating:
1. Shall be designated on the seating layout drawings and designed to allow an individual to transfer from a wheelchair to the theatre chair. The aisle standard shall be equipped with an armrest capable of lifting to a position parallel with the support column, opening sideways access to the seat. Aisle standards so equipped shall be provided with a label, displaying an easily recognizable "handicapped" symbol. Decorative requirements of aisle standards are waived for the handicapped access standards.
 2. Chairs located as shown in the contract drawings shall be mounted upon moveable steel bases. The steel bases shall be available for sections of one (1), two (2), or three (3) chairs. The bases shall be fabricated from 3/16" x 3-1/2" x 15-1/2" steel, with cross members securely fastened to the horizontal base members via Tec screws. Holes shall be provided for the attachment of the chair standards. Moveable bases are secured to the floor when the seating is in use with reverse anchors.]
- L. Furnish extra materials from the same production run that match products installed and that are packaged with protective covering for storage and identified with labels describing contents.

1. Furnish complete seat and back assemblies equal to quantity of 10 for each type and size of chair seat and back.
2. Furnish seat and back fabric covers equal to quantity of 10 for each type and size of cushion.
3. Furnish armrests equal to quantity of 10 for each type of armrest.

2.03 FABRICATION:

- A. Manufacture fabric-covered cushions with molded padding beneath fabric and with fabric covering free of welts, creases, stretch lines, and wrinkles. For each upholstered component, install pile and pattern run in a consistent direction.
- B. Fabricate floor attachment plates to conform to floor slope, if any, so that standards are plumb and chairs are maintained at same angular relationship to vertical throughout project.

PART 3 EXECUTION

3.01 EXAMINATION

- A. Prior to layout and installation examine floors, risers, and other adjacent work and conditions, with Installer present, for compliance with requirements and other conditions affecting performance of the work including, but not limited to, plumb of riser faces and concrete conditions.
- B. Examine locations of electrical connections.
- C. Examine locations of HVAC supply ducts.
- D. Proceed with installation only after unsatisfactory conditions have been corrected.

3.02 INSTALLATION

- A. Install seating in locations indicated and fastened securely to substrates according to manufacturer's written installation instructions.
- B. Use installation methods and fasteners that produce fixed audience seating assemblies with individual chairs capable of supporting an evenly distributed 600-lb static load applied 3" from front edge of the seat without failure or other conditions that might impair the chair's usefulness.
- C. Install seating with chair end standards aligned from first to last row and with backs and seats varied in width and spacing to optimize sightlines.
- D. Install riser-mounted attachments to maintain uniform chair heights above floor.
- E. Install chairs in curved rows at a smooth radius.
- F. Install seating so moving components operate smoothly and quietly.
- G. Install wiring conductors and cables concealed in components of seating and accessible for servicing.

3.03 FIELD QUALITY CONTROL

- A. Perform tests and inspections.
- B. Prepare test and inspection reports.

3.04 ADJUSTING

- A. Adjust chair backs so that they are properly aligned with each other.
- B. Adjust self-rising seat mechanisms so seats in each row are aligned when in upright position.
- C. Verify that all components and devices are operating properly.
- D. Repair minor abrasions and imperfections in finishes with coating that matches factory-applied finish.
- E. Replace upholstery fabric damaged during installation.

END OF SECTION

BEN LOMOND HIGH SCHOOL AUDITORIUM REMODEL

BEN LOMOND HIGH SCHOOL
1080 9TH STREET, OGDEN, UT 84404



KNIT

7250 Peak Drive, Suite 216
Las Vegas, Nevada 89128
Phone 702.363.2222
KnitStudios.com

THESE DOCUMENTS HAVE BEEN PRODUCED AS AN INSTRUMENT OF SERVICE AND ARE INTENDED SOLELY FOR THE PURPOSE OF CONSTRUCTING, USING AND MAINTAINING THE PROJECT KNIT AS THE ARCHITECT OF RECORD FOR THE PROJECT RETAINS OWNERSHIP OF THESE DOCUMENTS.
ANY USE OF THESE DOCUMENTS OR USE OF THIS DESIGN, DESIGN OR CONCEPTS DESCRIBED HEREIN IN WHOLE OR IN PART BY ANY MEANS WHATSOEVER IS STRICTLY PROHIBITED EXCEPT BY WRITTEN CONSENT OF KNIT.
REPRODUCTION OF THIS DOCUMENT IS STRICTLY PROHIBITED EXCEPT BY WRITTEN CONSENT OF KNIT.
COPYRIGHT 2021 KNIT

ABBREVIATIONS

ADA	AMERICANS WITH DISABILITIES ACT	LTG.	LIGHTING
A.F.F.	ABOVE FINISH FLOOR	MANUF.	MANUFACTURER
ANSI	AMERICAN NATIONAL STANDARDS INSTITUTE	MECH.	MECHANICAL
B.O.	BOTTOM OF	MEZZ.	MEZZANINE
C.L.	CENTER LINE	MFR.	MANUFACTURER
C.C.	CEILING	MIN.	MINIMUM
CONC.	CONCRETE	MTL.	METAL
CONSTR.	CONSTRUCTION	N.I.C.	NOT IN CONTRACT
CONT.	CONTINUOUS	O.C.	ON CENTER
COORD.	COORDINATE	OPP.	OPPOSITE
CORRUG.	CORRUGATED	RCP	REFLECTED CEILING PLAN
DEMO	DEMOLISH	RFR.	REINFORCED
DN.	DETAIL	REQD.	REQUIRED
EA.	EACH	SCHED.	SCHEDULE
ELEC.	ELECTRICAL	SIM.	SIMILAR
ELEV.	ELEVATION	S.S.	STAINLESS STEEL
EXIST.	EXISTING	STL.	STEEL
F.F.	FINISH FLOOR	STOR.	STRUCTURE
FIN.	FINISH	T.O.	TOP OF
F.R.P.	FIBER REINFORCED PLASTIC	TYP.	TYPICAL
GYP. BD.	GYP. BOARD	U.N.O.	UNLESS NOTED OTHERWISE
IBC	INTERNATIONAL BUILDING CODE	UL	UNDERWRITERS LABORATORIES
ICC	INTERNATIONAL CODE COUNCIL	U/L	UTILITY / UTILITIES
FT.	INCLUDED	V.I.F.	VERIFY IN FIELD

GENERAL NOTES

- GENERAL CONTRACTOR SHALL VISIT THE SITE. REVIEW THE BUILDING SHELL DRAWINGS AS SUBMITTED BY THE SCHOOL DISTRICT AND BECOME THOROUGHLY FAMILIAR WITH THE SITE CONDITIONS PRIOR TO BIDDING OR CONSTRUCTION.
- GENERAL CONTRACTOR SHALL CONSULT WITH ARCHITECT AND OWNER TO RESOLVE ANY CHANGES, OMISSIONS OR PLAN DISCREPANCIES PRIOR TO BIDDING OR CONSTRUCTION.
- ALL WORK SHALL BE PERFORMED IN STRICT COMPLIANCE WITH LOCAL, COUNTY, STATE AND FEDERAL CODES AND ORDINANCES.
- GENERAL CONTRACTOR SHALL VERIFY THE LOCATION OF ALL UTILITIES.
- GENERAL CONTRACTOR TO VERIFY ALL DIMENSIONS, INCLUDING CLEARANCES REQUIRED BY OTHER TRADES AND NOTIFY ARCHITECT AND OWNER OF ANY DISCREPANCIES PRIOR TO PROCEEDING WITH THE WORK. ALL DIMENSIONS ARE TO THE FACE OF GYPSUM BOARD, TILE BACKER, OR OTHER SHEATHING, UNLESS NOTED OTHERWISE. DO NOT SCALE DRAWINGS.
- GENERAL CONTRACTOR SHALL PATCH AND REPAIR ALL EXISTING WALLS, FLOORS, CEILINGS, OR OTHER SURFACES IDENTIFIED TO REMAIN THAT MAY BECOME DAMAGED DURING THE COURSE OF THE WORK.
- THE GENERAL CONTRACTOR IS RESPONSIBLE FOR OBTAINING PERMITS FOR FIRE PROTECTION, PLUMBING, MECHANICAL, AND ELECTRICAL SYSTEMS PRIOR TO INSTALLATION OF SUCH SYSTEMS.
- THE USE OF THESE DOCUMENTS IS RESTRICTED TO THE ORIGINAL SITE FOR WHICH THEY WERE PREPARED. REUSE OR REPRODUCTION OF THE DOCUMENTS, (WHOLE OR IN PART) FOR ANY OTHER PURPOSE IS PROHIBITED. SH ARCHITECTURE RETAINS ALL RIGHTS OF OWNERSHIP.
- GENERAL CONTRACTOR IS RESPONSIBLE FOR COORDINATING DELIVERY OF MATERIALS FROM CONTRACTED THIRD PARTY LOGISTICS DISTRIBUTION SERVICES AND VENDOR DIRECT SHIPMENTS. REFER TO CONSTRUCTION MANAGEMENT AGREEMENT FOR METHODS AND LEAD TIMES.
- RESPONSIBILITY FOR SUPPLY AND DELIVERY OF MATERIALS AND EQUIPMENT IS IDENTIFIED IN THE DRAWING SCHEDULE SHEETS UNDER THE COLUMN LABELED "RESPONSIBILITY".
- FOR THE PURPOSE OF THE DOCUMENTS, TO "INSTALL", SHALL MEAN TO PROVIDE ALL FASTENERS, MISCELLANEOUS HARDWARE, BLOCKING, ELECTRICAL CONNECTIONS, PLUMBING CONNECTIONS, AND OTHER ITEMS REQUIRED FOR A COMPLETE AND OPERATION INSTALLATION, UNLESS OTHERWISE NOTED.
- ALL ITEM SUBSTITUTIONS MUST BE APPROVED BY ARCHITECT AND OWNER.
- GENERAL CONTRACTOR SHALL RETAIN ONE SET OF THE PLANS TO NOTE AND DOCUMENT ALL CHANGES DURING CONSTRUCTION. THIS SET SHALL BE A PART OF THE GENERAL CONTRACTOR'S "STORE CLOSE-OUT PACKAGE" AS DESCRIBED IN THE AGREEMENT.
- THE A.I.A. DOCUMENT A201-2007, GENERAL CONDITIONS OF THE CONTRACT FOR CONSTRUCTION, SHALL APPLY TO THE PROJECT.
- THE CONTRACTOR AND SUB-CONTRACTORS SHALL BE SOLELY RESPONSIBLE FOR COMPLYING WITH ALL FEDERAL, STATE, AND LOCAL SAFETY REQUIREMENTS TOGETHER WITH EXERCISING PRECAUTIONS AT ALL TIMES FOR THE PROTECTION OF PERSONS INCLUDING EMPLOYEES AND PROPERTY. IT IS THE SOLE RESPONSIBILITY OF THE CONTRACTOR AND SUB-CONTRACTORS TO INITIATE, MAINTAIN, AND SUPERVISE ALL SAFETY REQUIREMENTS, PRECAUTIONS, AND PROGRAMS IN CONNECTION WITH THE WORK.
- THE GENERAL CONTRACTOR SHALL BE RESPONSIBLE TO COORDINATE ALL WORK AND FOR THE MEANS, METHODS, PROCEDURES, TECHNIQUES, AND SEQUENCE OF CONSTRUCTION.
- THE GENERAL CONTRACTOR IS TO GUARANTEE ALL WORK INCLUDING WORK DONE BY SUB-CONTRACTORS FOR A PERIOD OF A MINIMUM ONE (1) YEAR COMMENCING WITH THE DATE OF SUBSTANTIAL COMPLETION, OR AS STATED IN CONTRACT WITH OWNER, WHICHEVER IS GREATER.
- GENERAL CONTRACTOR SHALL BE RESPONSIBLE FOR ALL SCHEDULING AND MONITORING OF ON-SITE TESTING AND INSPECTION SERVICES AS LISTED IN THE AGREEMENT.
- WHEN CONTRACTOR ACCEPTS DELIVERY OF ALL ITEMS NOTED ON PLANS EITHER IN CONTRACT OR NOT IN CONTRACT, HE SHALL BE RESPONSIBLE FOR LOSS AND/ OR DAMAGE TO THESE ITEMS.
- THE GENERAL CONTRACTOR & EACH SUBCONTRACTOR IS TO HAVE A FULL TIME QUALIFIED SUPERVISOR ON THE SITE AT ALL TIMES WHILE WORK IS BEING PERFORMED.
- THE CONTRACTOR SHALL MAINTAIN FOR THE ENTIRE DURATION OF THE WORK ALL EXITS, EXIT LIGHTING, FIRE PROTECTION DEVICES, AND ALARMS IN CONFORMANCE WITH ALL APPLICABLE CODES AND ORDINANCES.
- DO NOT SCALE DRAWINGS. WRITTEN DIMENSIONS GOVERN. ALL PARTITION LOCATIONS, ALL DOOR AND OPENING LOCATIONS SHALL BE SHOWN ON FLOOR PLAN. IN CASE OF CONFLICT NOTIFY THE ARCHITECT. FLOOR PLAN BY ARCHITECT SUPERSEDES ALL OTHER PLANS. ALL DIMENSIONS MARKED "CLEAR" SHALL BE FROM FINISH FACE TO FINISH FACE.
- EGRESS DOORS SHALL BE PROVIDED PER 2021 IBC SECTIONS 1007.
- PRIOR TO ANY SAW CUTTING OR CORING, ALL LOCATIONS SHALL BE REVIEWED IN FIELD BY THE GENERAL CONTRACTOR UTILIZING GROUND PENETRATING RADAR, AND WILL BE VERIFIED BY THE SCHOOL DISTRICT FACILITIES PROJECT MANAGER PRIOR TO CUTTING/CORING.
- FIREBLOCKING SHALL BE INSTALLED IN CONCEALED SPACES OF STUD WALL AND PARTITIONS, INCLUDING FURRED OR STUDDO-OFF SPACES OF MASONRY OR CONCRETE WALLS, AND AT THE CEILING AND FLOOR OR ROOF LEVELS, PER 2021 IBC SECTION 718.2.2. ALL FIREBLOCKING SHALL BE STAMPED AS "FIRE-RETARDANT".
- REQUIRED FLAME SPREAD RATING: INTERIOR FINISH OF WALLS AND CEILINGS SHALL HAVE A FLAME SPREAD RATING NOT GREATER THAN THAT DESIGNATED BY THE CLASS PRESCRIBED FOR THE VARIOUS GROUPS LISTED IN 2021 IBC TABLE 803.11, WHEN TESTED IN ACCORDANCE WITH 2015 IBC SECTION 803.1.2.1.
- ALL MATERIALS, FINISHES, AND/OR PRODUCTS SPECIFIED IN THE DRAWINGS ARE CONSIDERED TO BE BASES OF DESIGN.

INDEX OF DRAWINGS

SHEET #	SHEET NAME	REV #	DATE
GENERAL			
CS	COVER SHEET		
GN1	REFERENCE PLAN		
GN2	ACCESSIBILITY STANDARDS - 2017 ICC A117.1 - EXISTING BUILDING		
ARCHITECTURAL			
AD1.01	DEMOLITION SECTOR PLAN		
AD1.11	DEMOLITION FLOOR PLAN - AUDITORIUM	1	03.06.24
AD1.12	DEMOLITION FLOOR PLANS - ASSOCIATED SUPPORT SPACES	1	03.06.24
AD1.21	DEMOLITION REFLECTED CEILING PLAN - AUDITORIUM		
AD1.22	DEMOLITION REFLECTED CEILING PLAN - DRESSING ROOM		
AD2.11	DEMOLITION ELEVATION - AUDITORIUM		
A1.01	SECTOR PLAN		
A1.11	FLOOR PLAN - AUDITORIUM	1	03.06.24
A1.12	FLOOR PLANS - ASSOCIATED SUPPORT SPACES	2	03.06.24
A1.21	REFLECTED CEILING PLAN - AUDITORIUM	1	03.06.24
A1.22	REFLECTED CEILING PLAN - DRESSING ROOM		
A2.11	ELEVATIONS - AUDITORIUM		
A2.21	ELEVATIONS - TICKET BOOTH	1	03.06.24
A2.22	ELEVATIONS - DRESSING ROOM		
A2.23	ELEVATIONS - SOUND BOOTH		
A3.11	SECTIONS	1	03.06.24
A4.01	TYPICAL METAL FRAMING TYPES & DETAILS		
A4.02	WALL TYPES, SECTIONS, & TYPICAL DETAILS	1	03.06.24
A5.01	MILLWORK DETAILS		
A6.01	DOOR SCHEDULE, DOOR & WINDOW TYPES, & DETAILS	1	03.06.24
IA1.21	FINISH PLANS & SCHEDULE - TICKET BOOTH & CHANGING ROOM		
ELECTRICAL			
E0.01	ELECTRICAL SYMBOLS AND NOTES		
E0.02	SCHEDULES		
E1.00	ELECTRICAL PLAN - OVERALL		
E1.01	ENLARGED ELECTRICAL DEMOLITION PLANS		
E2.01	ENLARGED LIGHTING PLAN - AUDITORIUM		
E2.02	ENLARGED LIGHTING PLAN - CHANGING ROOM		
E3.01	ENLARGED POWER PLAN - AUDITORIUM		
E3.02	ENLARGED POWER PLAN - TICKET BOOTH		
E3.03	ENLARGED POWER PLAN - CHANGING ROOM		
E4.01	ELECTRICAL DIAGRAMS		
E4.02	THEATRICAL LIGHTING DIAGRAMS		
E0.01	AUDIOVISUAL SYMBOLS AND NOTES		
T0.02	AUDIOVISUAL SCHEDULES		
T1.01	OVERALL AUDIOVISUAL PLAN		
T2.01	ENLARGED AUDIOVISUAL PLAN - AUDITORIUM		
T2.02	ENLARGED AUDIOVISUAL CEILING PLAN - AUDITORIUM		
T2.03	ENLARGED AUDIOVISUAL PLAN - CHANGING ROOM		
T2.04	ENLARGED AUDIOVISUAL PLAN - DRAMA ROOM		
T4.01	AUDIOVISUAL DIAGRAMS		
T4.02	AUDIOVISUAL DIAGRAMS		
T4.03	AUDIOVISUAL DIAGRAMS		

PROJECT DATA

PROJECT DESCRIPTION: BEN LOMOND HIGH SCHOOL
THIS PROJECT IS A RENOVATION OF THE OF THE BEN LOMOND HIGH SCHOOL AUDITORIUM AND ASSOCIATED SUPPORT SPACES INCLUDING UPGRADES TO THE THEATER PRODUCTION EQUIPMENT, A NEW SOUND BOOTH REPLACING THE EXISTING SOUND BOOTH, NEW TICKET BOOTH AT THE AUDITORIUMS ENTRANCE, AND CONVERTING AN EXISTING STORAGE ROOM INTO A NEW CHANGING ROOM.

CONTRACTOR COMPLIANCE:
OWNER'S GENERAL CONTRACTOR SHALL VISIT THE PREMISES AND VERIFY ALL EXISTING CONDITIONS PRIOR TO THE START OF CONSTRUCTION AND SHALL REPORT ALL DISCREPANCIES TO OWNER'S ARCHITECT. OWNER'S GENERAL CONTRACTOR SHALL CONFORM TO ALL REQUIREMENTS REGARDING CONSTRUCTION PROCEDURES, INSURANCE, ETC., AS SET FORTH BY THE OGDEN SCHOOL DISTRICT.

PROJECT DIRECTORY

CLIENT: OGDEN SCHOOL DISTRICT
(PRIMARY CONTACT)
1950 Monroe Blvd, Building 1,
Room 110, Ogden, UT 84401
CONTACT: Jared Cherry
PH: 801.430.1293
E-MAIL: cherryj@ogdensd.org

PROJECT LOCATION: BEN LOMOND HIGH SCHOOL
Ben Lomond High School
1080 9th Street, Ogden,
UT 84404

ARCHITECT: KNIT
868 S. McClelland St., Ste #2
Salt Lake City, UT 84102
CONTACT: Mark Pavoni, AIA, NCARB
PH: 801-883-9328
E-MAIL: markp@knitstudios.com

ELECTRICAL ENGINEER: BNA CONSULTING
4225 W. Lake Park Boulevard, STE. 275
West Valley City, Utah 84120
CONTACT: Richard Wardle, Principal
PH: 801.532.2196
E-MAIL: richard@bnaconsulting.com

SYMBOLS LEGEND

	MATERIAL TAG
	ROOM NUMBER
	KEYNOTE
	GRID BUBBLE AND LINE
	INTERIOR ELEVATION TAG
	REVISION TAG
	SECTION TAG

CODE ANALYSIS

APPLICABLE CODES:
ALL CODES WITH FINAL APPROVED AMENDMENTS:
2021 INTERNATIONAL BUILDING CODE (IBC)
2021 INTERNATIONAL MECHANICAL CODE (IMC)
2021 INTERNATIONAL PLUMBING CODE (IPC)
2020 NATIONAL ELECTRICAL CODE (NEC)
2021 INTERNATIONAL ENERGY CONSERVATION CODE (IECC)
2021 INTERNATIONAL EXISTING BUILDING CODE (IEBC)
2017 ICC A117.1 ACCESSIBLE AND USABLE BUILDINGS AND FACILITIES

OTHER STATUTES, ORDINANCES, LAWS, REGULATIONS, RULES, ORDERS, AND CODES SPECIFIED IN OTHER SECTIONS OF THE SPECIFICATIONS OR BEARING THE WORK REGULATIONS OF OCCUPATIONAL SAFETY AND HEALTH ADMINISTRATION (OSHA) UNLESS SUPERCEDED BY STATE STATUTE OR LOCAL LAW.

AREA OF TENANT IMPROVEMENT: EXISTING CONDITIONS, NO ADDITIONAL SQUARE FOOTAGE ADDED

CHANGE IN USE: THERE IS NO CHANGE IN USE

OCCUPANCY: 'E' OCCUPANCY, THERE IS NO CHANGE IN OCCUPANCY

CONSTRUCTION TYPE: (PER ORIGINAL DRAWINGS) I-B (FULLY SPRINKLERED)

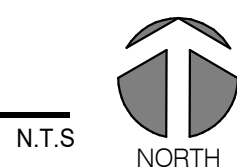
PLUMBING FIXTURES: SINCE THERE IS NO ADDITIONAL SQUARE FOOTAGE ADDED, NO CHANGE IN USE, AND NO CHANGE IN OCCUPANCY, IT IS ASSUMED THAT THE EXISTING FIXTURES MEET THE DESIGNED OCCUPANT LOAD.

NOTE: ALL EXIT DOORS TO SWING IN DIRECTION OF TRAVEL FOR SPACES WITH AN OCCUPANT LOAD LARGER THAN 50

PROJECT LOCATION



VICINITY MAP - AREA MAP
BEN LOMOND HIGH SCHOOL
1080 9TH STREET, OGDEN, UTAH 84404



ISSUE DATE: 02.07.2024

REV DATE COMMENT



COVER SHEET
BEN LOMOND HIGH SCHOOL AUDITORIUM REMODEL
BEN LOMOND HIGH SCHOOL
1080 9TH STREET, OGDEN, UT 84404
OGDEN SCHOOL DISTRICT

TITLE PROJECT CLIENT

JOB NO: 230109

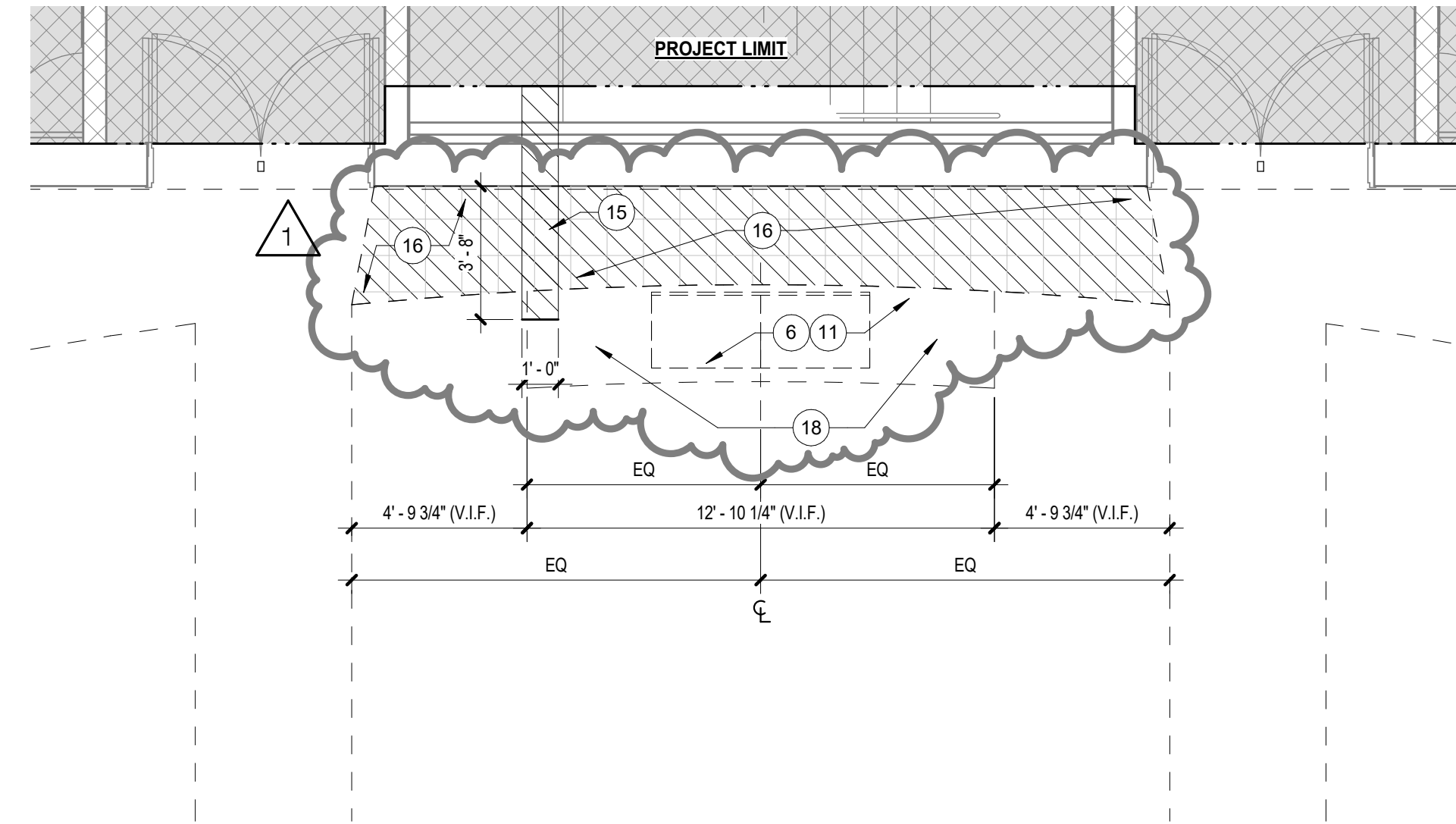
CS

SHEET NOTES

- A. CONTRACTOR SHALL NOTIFY OWNER/ARCHITECT IN WRITING OF ANY UNFORSEEN EXISTING CONDITIONS THAT MAY PREVENT OR DISALLOW WORK. CONTRACTOR SHALL RECORD ANY DISCREPANCY ON A REPRODUCIBLE DOCUMENT & TRANSMIT FOR PROJECT RECORD FOR COORDINATION & NECESSARY RESOLUTION PRIOR TO CONTINUING WORK.
- B. CONTRACTOR SHALL EXERCISE CAUTION NOT TO DAMAGE EXISTING SURFACES, DUCTS, PIPES, DOORS & ALL ASSOCIATED COMPONENTS ADJACENT TO DEMOLITION AREAS. SHOULD ANY DAMAGE OCCUR, CONTRACTOR SHALL BE RESPONSIBLE TO REPAIR OR REPLACE AT NO ADDITIONAL COST TO THE OWNER.
- C. MAINTAIN ACCESS TO EXISTS AT ALL TIMES. FIRE ALARMS & SMOKE DETECTION SYSTEMS SHALL REMAIN OPERATIONAL AT ALL TIMES. PROTECT SMOKE DETECTORS AS REQUIRED & IN CONFORMANCE WITH CODES & LOCAL AUTHORITIES HAVING JURISDICTION.
- D. FOR ALL SURFACES SCHEDULED TO REMAIN, PATCH & MATCH SURFACES DISTURBED BY DEMOLITION OR REMOVAL OF EQUIPMENT OR UTILITIES. INSTALL PATCHING TO MATCH ADJACENT WORK IN FINISH.
- E. PATCH AND REPAIR EXISTING SURFACES / HOLES TO MATCH SIMILAR ADJACENT SURFACE IN ALL ASPECTS.
- F. ANY HOLES MADE IN THE FLOOR, WALLS AND CEILING MUST BE REPAIRED TO MATCH EXISTING.
- G. SEE ELECTRICAL DRAWINGS FOR ADDITIONAL INFORMATION & COORDINATE.

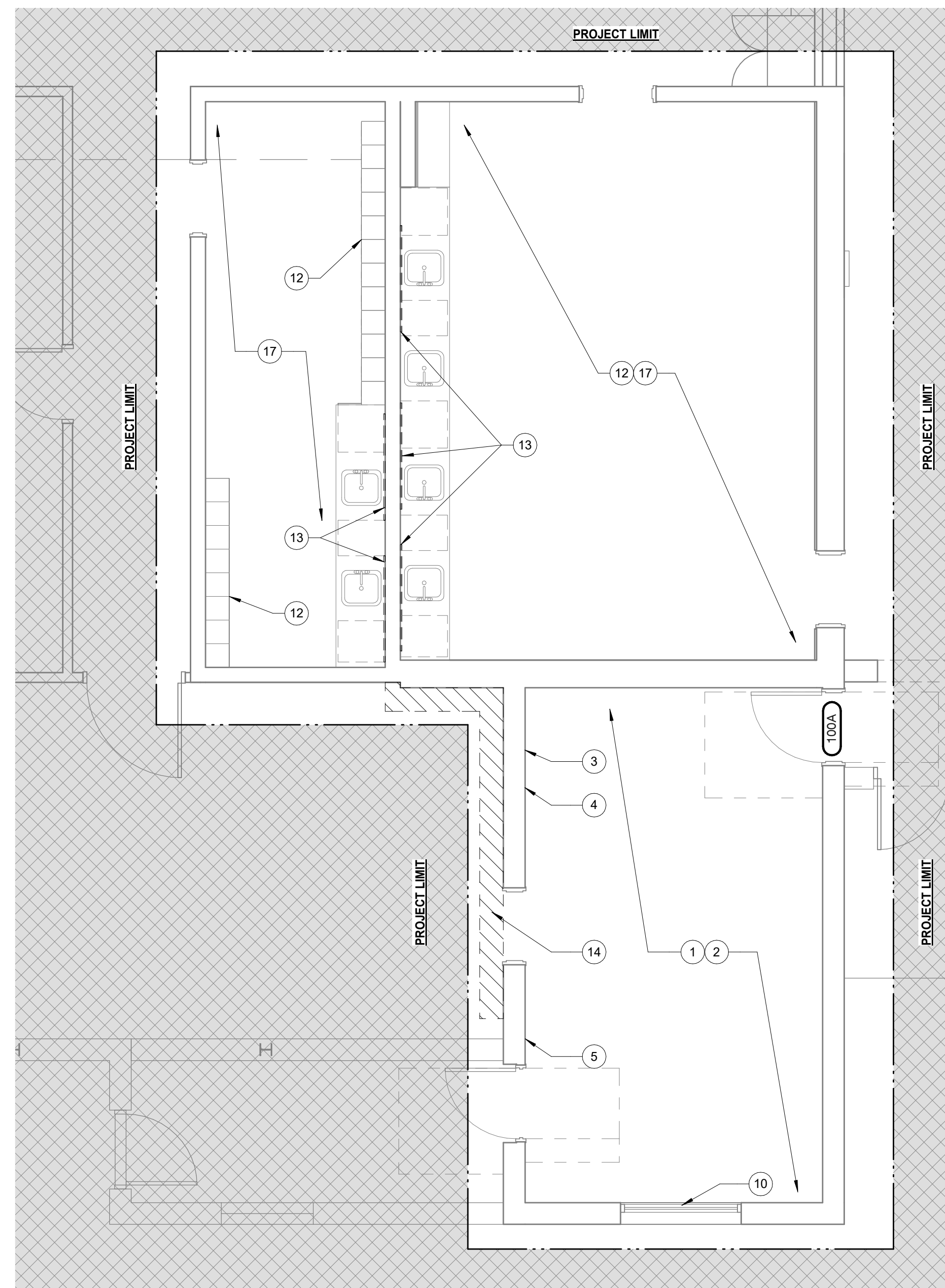
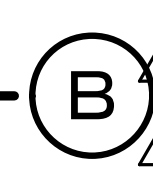
KEYNOTES

- 1 REMOVE EXISTING STORAGE RACK SYSTEM, COMPLETE.
- 2 REMOVE EXISTING LIGHT FIXTURES, COMPLETE. (U.N.O) SEE ELECTRICAL DRAWINGS FOR ADDITIONAL INFORMATION AND COORDINATE.
- 3 REMOVE EXISTING FIRE ALARMS AND PREPARE FOR RELOCATION. PROTECT DEVICE AND ASSOCIATED WIRING.
- 4 EXISTING PIPING RETAIN AND PROTECT.
- 5 EXISTING ROOF DRAIN. RETAIN AND PROTECT.
- 6 REMOVE EXISTING SOUND BOOTH COMPLETE.
- 7 REMOVE EXISTING CARPET AROUND NEW TICKET BOOTH FOOTPRINT. PATCH AND REPAIR SUB-FLOOR PREPARE FOR NEW FINISH.
- 8 EXISTING STRUCTURAL COLUMN RETAIN AND PROTECT.
- 9 EDGE OF BULKHEAD ABOVE.
- 10 EXISTING GLAZING SYSTEM, RETAIN AND PROTECT.
- 11 EXISTING ELECTRICAL WIRING. RETAIN AND PROTECT.
- 12 EXISTING CHANGING ROOM ACCESSORIES (CASEWORK, LOCKERS, ETC), RETAIN & PROTECT. (V.I.F.)
- 13 REMOVE EXISTING MIRROR SYSTEM, COMPLETE. PATCH, REPAIR, AND PREPARE SURFACE FOR INSTALLATION OF NEW MIRRORS.
- 14 SAWCUT EXISTING FLOOR SLAB IN NEW CHANGING ROOM AND DRESSING ROOM AREA. EXCAVATE AS NEEDED. PATCH AND REPAIR FLOORING TO MATCH EXISTING UPON COMPLETION OF WORK.
- 15 SAWCUT EXISTING FLOOR SLAB. EXCAVATE AS NEEDED. PATCH AND REPAIR FLOORING TO MATCH EXISTING UPON COMPLETION OF WORK. SEE 'DESCRIPTION OF PLUMBING WORK' FOR MORE INFORMATION AND COORDINATE.
- 16 EXISTING AUDITORIUM FINISH, REMOVE, RETAIN AND PROTECT, REINSTALL. (V.I.F.)
- 17 EXISTING FINISHES, RETAIN AND PROTECT.
- 18 REMOVE EXISTING AUDITORIUM SEATING, COMPLETE.



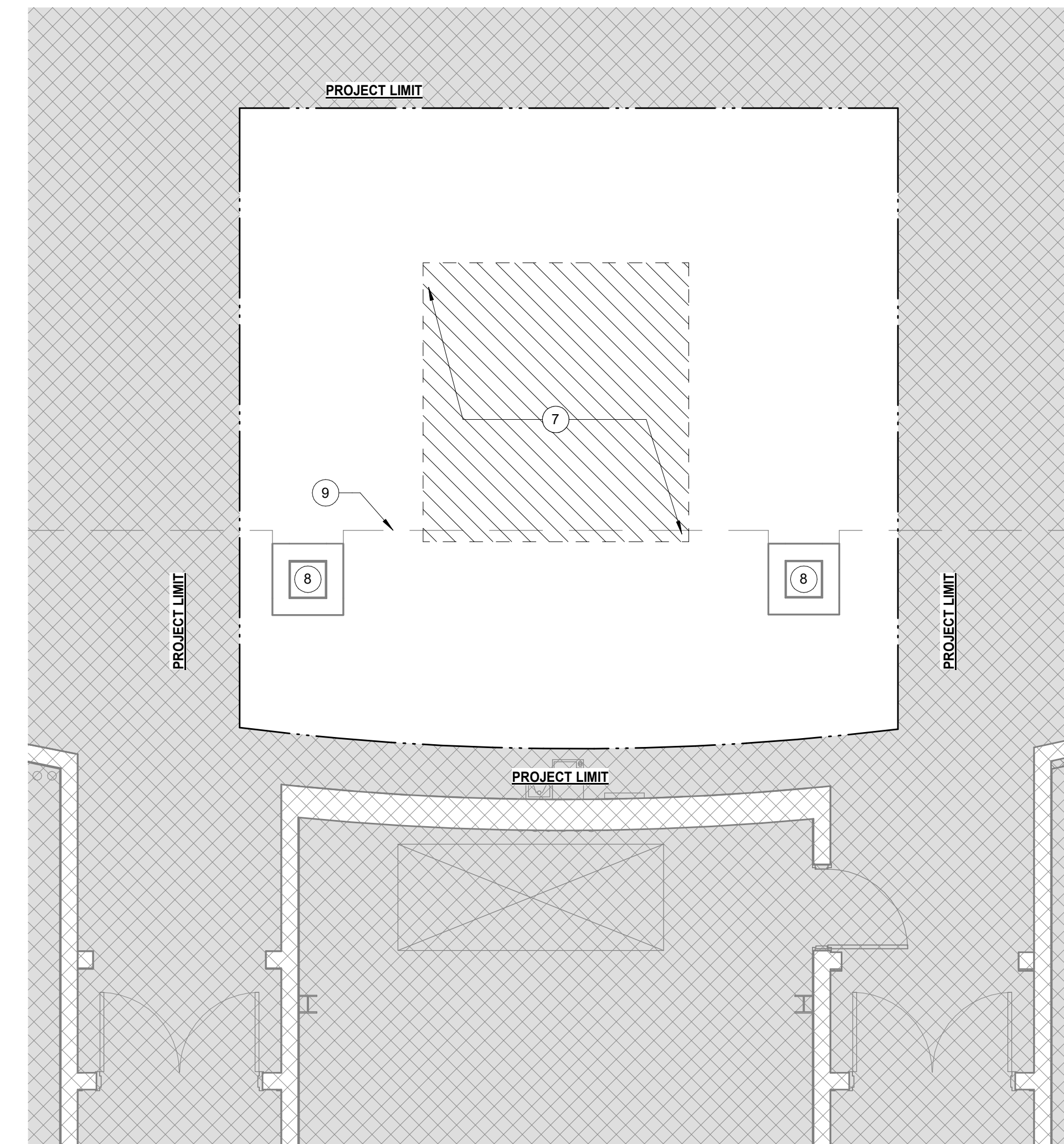
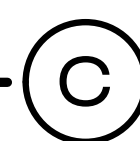
DEMOLITION PLAN - SOUND BOOTH

1/4" = 1'-0"



DEMOLITION PLAN - DRESSING ROOM

1/4" = 1'-0"



DEMOLITION PLAN - TICKET BOOTH

1/4" = 1'-0"



DRAWING LEGEND

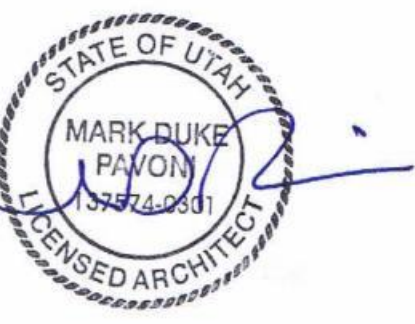
SYMBOL	DESCRIPTION
	NOT IN SCOPE OF WORK
	PROJECT LIMIT LINE
	EXISTING WALLS, RETAIN AND PROTECT.
	EXISTING FLOOR FINISH TO BE REMOVED & DISPOSED



THESE DOCUMENTS HAVE BEEN PRODUCED AS AN INSTRUMENT OF SERVICE AND ARE INTENDED SOLELY FOR THE PURPOSE OF CONSTRUCTING, USING AND MAINTAINING THE PROJECT KNIT AS THE ARCHITECT OF RECORD FOR THE PROJECT. RETAINERSHIP OF THESE DOCUMENTS BY ANY USER OF THESE DOCUMENTS OR USE OF THIS DESIGN, IDEAS OR CONCEPTS DESCRIBED HEREIN IN WHOLE OR PART BY ANY MEANS WHATSOEVER IS STRICTLY PROHIBITED EXCEPT BY WRITTEN CONSENT OF KNIT. REPRODUCTION OF THIS DOCUMENT IS STRICTLY PROHIBITED EXCEPT BY WRITTEN CONSENT OF KNIT. COPYRIGHT 2021 KNIT.

ISSUE DATE: 02.07.2024

REV	DATE	COMMENT
1	03.06.24	ADDENDUM #03

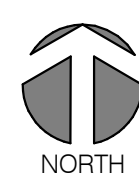


DEMOLITION FLOOR PLANS - ASSOCIATED SUPPORT SPACES
 BEN LOMOND HIGH SCHOOL AUDITORIUM REMODEL
 BEN LOMOND HIGH SCHOOL
 1080 9TH STREET, OGDEN, UT 84404
 OGDEN SCHOOL DISTRICT

TITLE	PROJECT	CLIENT

JOB NO: 230109

AD1.12



SHEET NOTES

- A. ALL DIMENSIONS ARE TO FINISHED FACE OF WALL UNLESS NOTED OTHERWISE. ALL CLEAR DIMENSIONS ARE FROM FACE OF FINISH.
- B. SHOULD ANY CONDITION ARISE WHERE THE INTENT OF DRAWINGS ARE IN DOUBT OR THERE IS A DISCREPANCY BETWEEN DRAWINGS & FIELD CONDITIONS, THE CONTRACTOR SHALL NOTIFY THE ARCHITECT IN WRITING FOR CLARIFICATION. RECORD ANY DISCREPANCY ON A REPRODUCIBLE DOCUMENT & TRANSMIT TO THE ARCHITECT FOR PROJECT RECORD, COORDINATION & NECESSARY RESOLUTION PRIOR TO CONTINUING WORK.
- C. MAINTAIN ACCESS TO EXITS AT ALL TIMES. FIRE ALARMS & SMOKE DETECTION SYSTEMS SHALL REMAIN OPERATIONAL AT ALL TIMES. PROTECT SMOKE DETECTORS AS REQUIRED & IN CONFORMANCE WITH CODES & LOCAL AUTHORITIES HAVING JURISDICTION.
- D. ALTHOUGH NOTES MAY BE GIVEN ONLY ONCE, MANY NOTES ARE TYPICAL FOR SIMILAR DETAILS & CONDITIONS.
- E. SEE ELECTRICAL DRAWINGS FOR ADDITIONAL INFORMATION & COORDINATE.

KEYNOTES

- 1 NEW (22 COUNT) 100'-0" LENGTHS OF 3/4" SYNTHETIC FIBER "MULTILINE II" OR EQUIVALENT ROPES, ADJUST ROPE LOCK LINE.
- 2 VERIFY OPERATION OF ROPE SYSTEM AND REPORT ANY MALFUNCTIONS TO OWNER AND ARCHITECT IN WRITING.
- 3 VERIFY INTEGRITY OF ANGLE IRON, REPLACE AS REQUIRED, AND REPAIR BOTTOM STOP. BRACE TO BRACE, AT LINES 18 - 19.
- 4 ADD ALT #1: PATCH, REPAIR, AND PREPARE SURFACES FOR NEW PAINT FINISH. SEE ADD ALT #1 AUDITORIUM PAINTING NOTES THIS SHEET.
- 5 ADD ALT #2: PATCH, REPAIR, PREPARE, AND PAINT FLOOR WITH EPOXY PAINT. INSTALL (1000 COUNT, V.I.F.) NEW BUILT-IN AUDITORIUM SEATS. SEE ADD ALT #2 AUDITORIUM SEATING NOTES THIS SHEET.
- 6 ADD ALT #3: PROVIDE NEW WOOD WAINSCOTTING TO MATCH EXISTING WHERE POWER OUTLETS WERE REMOVED. SEE ADD ALT #3 STAGE POWER & DATA NOTES THIS SHEET.
- 7 ADD ALT #4: SEE ADD ALT #4 AUDITORIUM SIDEWALL NOTES THIS SHEET.
- 8 REPLACE SMOKE VENT ROPE SYSTEM WITH SIMILAR.
- 9 ADA ACCESSIBLE WHEELCHAIR SEATING



ADD ALT #1 AUDITORIUM PAINTING

ADD ALTERNATIVE #01: PAINT AUDITORIUM WALLS AND CEILING W/4 DIFFERENT COLORS: NEW WORK SCOPE
 THE CONTRACTOR SHALL PATCH AND PREPARE SURFACES TO RECEIVE PAINT; PRIME THE SURFACES TO BE PAINTED; PAINT EACH SURFACE WITH THE COLOR INDICATED BY FINISH SCHEDULE WITH TWO COATS OF PAINT PER COLOR.

ADD ALT #2 AUDITORIUM SEATING

ADD ALTERNATIVE #02: REPLACE EXISTING AUDITORIUM SEATING WITH NEW SEATING: NEW WORK SCOPE
 THE CONTRACTOR SHALL PATCH AND REPAIR EXISTING FLOOR AND PREPARE AND PAINT FLOOR SURFACE WITH EPOXY PAINT. INSTALL (1000) FIXED AUDITORIUM SEATS, INCLUDING (9) ACCESSIBLE WHEELCHAIR SPACES; CONTRACTOR SHALL COORDINATE THE FINAL SEAT COUNT, INCLUDING ATTIC STOCK, AND FINAL SEAT LOCATIONS, INCLUDING THE QUANTITY AND LOCATION ADA ACCESSIBLE SEATING AND COMPANION SEATING, WITH THE OWNER BASED ON EXISTING CONDITIONS. BASIS OF DESIGN FOR SEATING: IRWIN SEATING COMPANY CITATION MODEL 90.12.10.4 WITH OWNER SELECTED FINISHES AND ACCESSORIES.

ADD ALT #3 STAGE POWER & DATA

ADD ALTERNATIVE#03: STAGE POWER AND DATA: NEW WORK SCOPE
 THE CONTRACTOR SHALL REPAIR WOOD WAINSCOTT WHERE BOXES WERE REMOVED IN DEMOLITION SCOPE BY PROVIDING NEW WOOD WAINSCOTT PANEL COMPLETE TO MATCH EXISTING. WHERE WOOD WAINSCOTT WAS SALVAGED FROM AUDITORIUM SIDEWALL IN ADD ALT #4, CONTRACTOR TO USE SALVAGED WAINSCOTT.

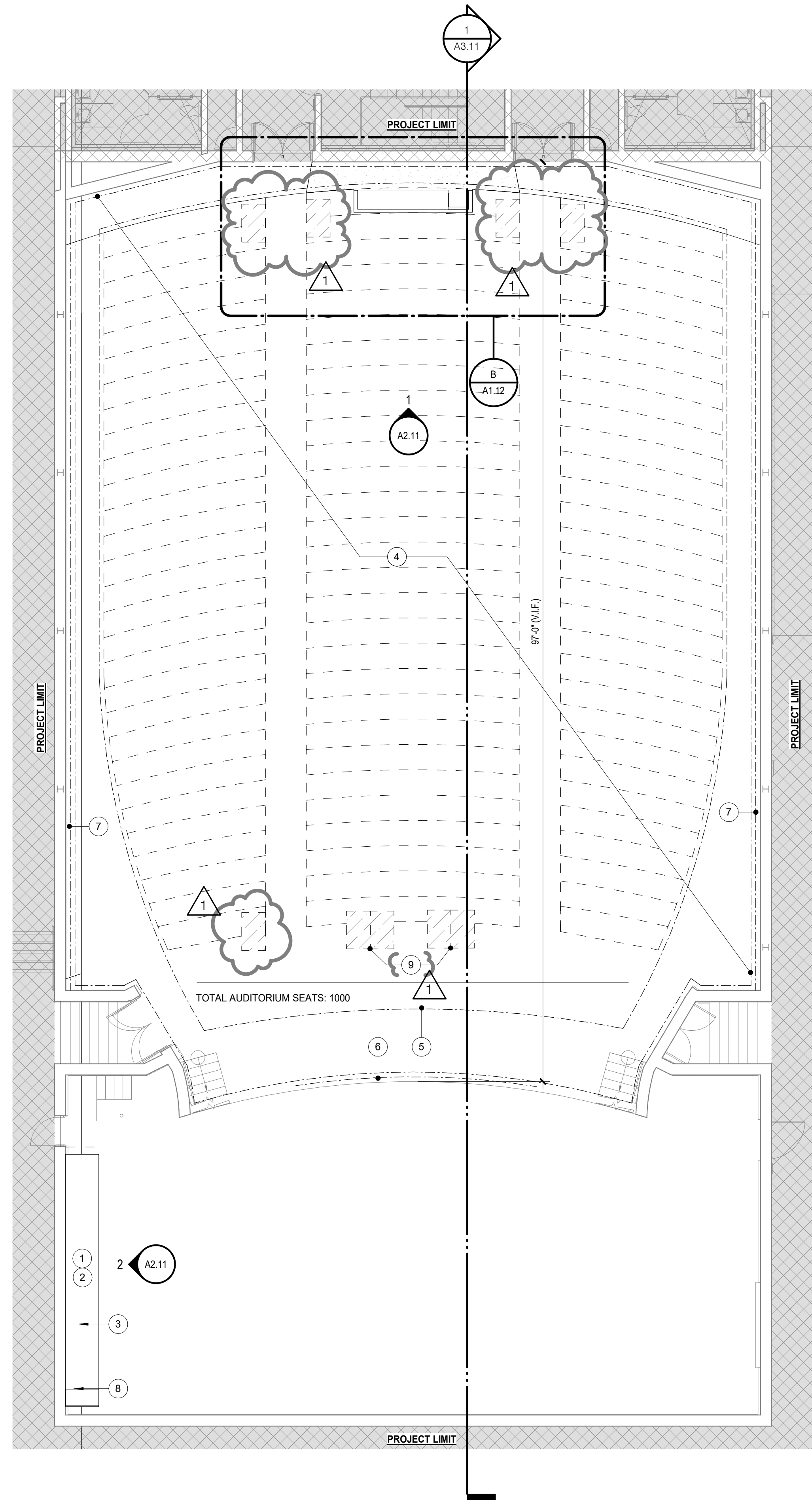
ADD ALT #4 AUDITORIUM SIDEWALL

ADD ALTERNATIVE #04: AUDITORIUM SIDEWALL: NEW WORK SCOPE

- a. OPTION 1: THE CONTRACTOR IS TO PROVIDE NEW FRAMING/DRYWALL BUILDOUT TO EXTEND TO FLOOR THE ANGLES OF THE BARREL VAULTS ABOVE, NEW BARREL VAULTS TO BE PAINTED AS INSTRUCTED IN ADD ALTERNATIVE #01
- b. OPTION 2: THE CONTRACTOR IS TO PROVIDE NEW FRAMING/DRYWALL FLAT TO THE GROUND, WITH NEW ACOUSTIC BARREL DIFFUSERS INSTALLED ON THE NEW FLAT WALL. BASIS OF DESIGN QTS ACC-U-SOUND BATEL DIFFUSERS.

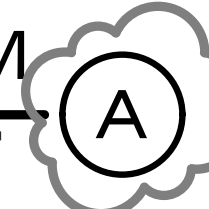
DRAWING LEGEND

SYMBOL	DESCRIPTION
	NOT IN SCOPE OF WORK
	PROJECT LIMIT LINE
	EXISTING WALLS, RETAIN AND PROTECT.
	ADA ACCESSIBLE SEATING



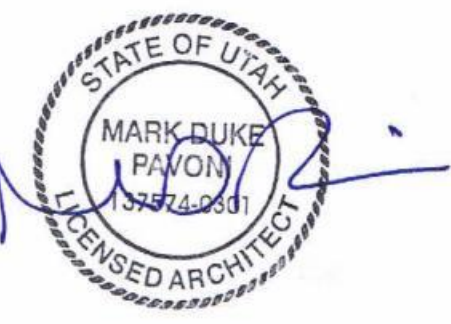
FLOOR PLAN - AUDITORIUM

1/8" = 1'-0"



THESE DOCUMENTS HAVE BEEN PRODUCED AS AN INSTRUMENT OF SERVICE AND ARE INTENDED SOLELY FOR THE PURPOSE OF CONSTRUCTING, USING AND MAINTAINING THE PROJECT KNIT AS THE ARCHITECT OF RECORD FOR THE PROJECT RETAINS OWNERSHIP OF THESE DOCUMENTS.
 ANY USE OF THESE DOCUMENTS OR USE OF THIS DESIGN, IDEAS OR CONCEPTS DESCRIBED HEREIN IN WHOLE OR PART BY ANY MEANS WHATSOEVER IS STRICTLY PROHIBITED EXCEPT BY WRITTEN CONSENT OF KNIT.
 REPRODUCTION OF THIS DOCUMENT IS STRICTLY PROHIBITED EXCEPT BY WRITTEN CONSENT OF KNIT.
 COPYRIGHT 2021 KNIT

ISSUE DATE:	02.07.2024	
REV	DATE	COMMENT
1	03.06.24	ADDENDUM #03



FLOOR PLAN - AUDITORIUM
 BEN LOMOND HIGH SCHOOL AUDITORIUM REMODEL
 BEN LOMOND HIGH SCHOOL
 1080 9TH STREET, OGDEN, UT 84404
 OGDEN SCHOOL DISTRICT

TITLE	PROJECT	CLIENT
-------	---------	--------

JOB NO: 230109

A1.11

RCP GENERAL NOTES

- A. HEIGHT REFERENCES ARE TAKEN FROM DATUM FINISH ELEVATION 0'-0". FIELD VERIFY CONDITIONS & NOTIFY ARCHITECT OR ANY INADEQUATE CLEARANCES FOR CEILING LAYOUT AS DESIGNED.
- B. NOTIFY ARCHITECT OF ANY DISCREPANCIES BETWEEN FINISH SCHEDULE & CEILING PLAN.
- C. LIGHT FIXTURES SHOWN FOR COORDINATION PURPOSES ONLY. REFER TO ELECTRICAL DRAWINGS FOR MORE INFORMATION AND COORDINATE.
- D. HVAC REGISTERS SHOWN FOR COORDINATION PURPOSES ONLY.
- E. SEE ELECTRICAL FOR ADDITIONAL INFORMATION & COORDINATE.

RCP REFERENCE NOTES

- 1 EXISTING 12" X 12" ACT TILE, RETAIN AND PROTECT, AND DO NOT PAINT.
- 2 ADD ALT #1: PATCH, REPAIR, AND PREPARE SURFACES FOR NEW PAINT FINISH, SEE ADD ALT #1 AUDITORIUM PAINTING NOTES THIS SHEET.

ADD ALT #1 AUDITORIUM PAINTING

ADD ALTERNATIVE #01: PAINT AUDITORIUM WALLS AND CEILING W/4 DIFFERENT COLORS: NEW WORK SCOPE

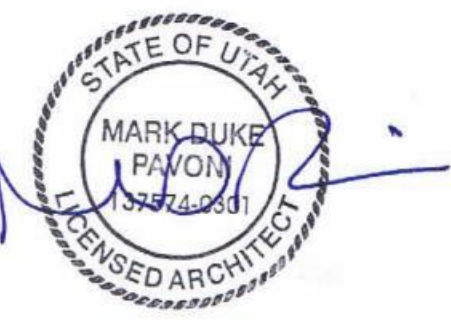
THE CONTRACTOR SHALL PATCH AND PREPARE SURFACES TO RECEIVE PAINT, PRIME THE SURFACES TO BE PAINTED, PAINT EACH SURFACE WITH THE COLOR INDICATED BY FINISH SCHEDULE WITH TWO COATS OF PAINT PER COLOR.



KNIT
7250 Peak Drive, Suite 216
Las Vegas, Nevada 89128
Phone 702.363.2222
KnitStudios.com

ISSUE DATE: 02.07.2024

REV	DATE	COMMENT
1	03.06.24	ADDENDUM #03



REFLECTED CEILING PLAN - AUDITORIUM

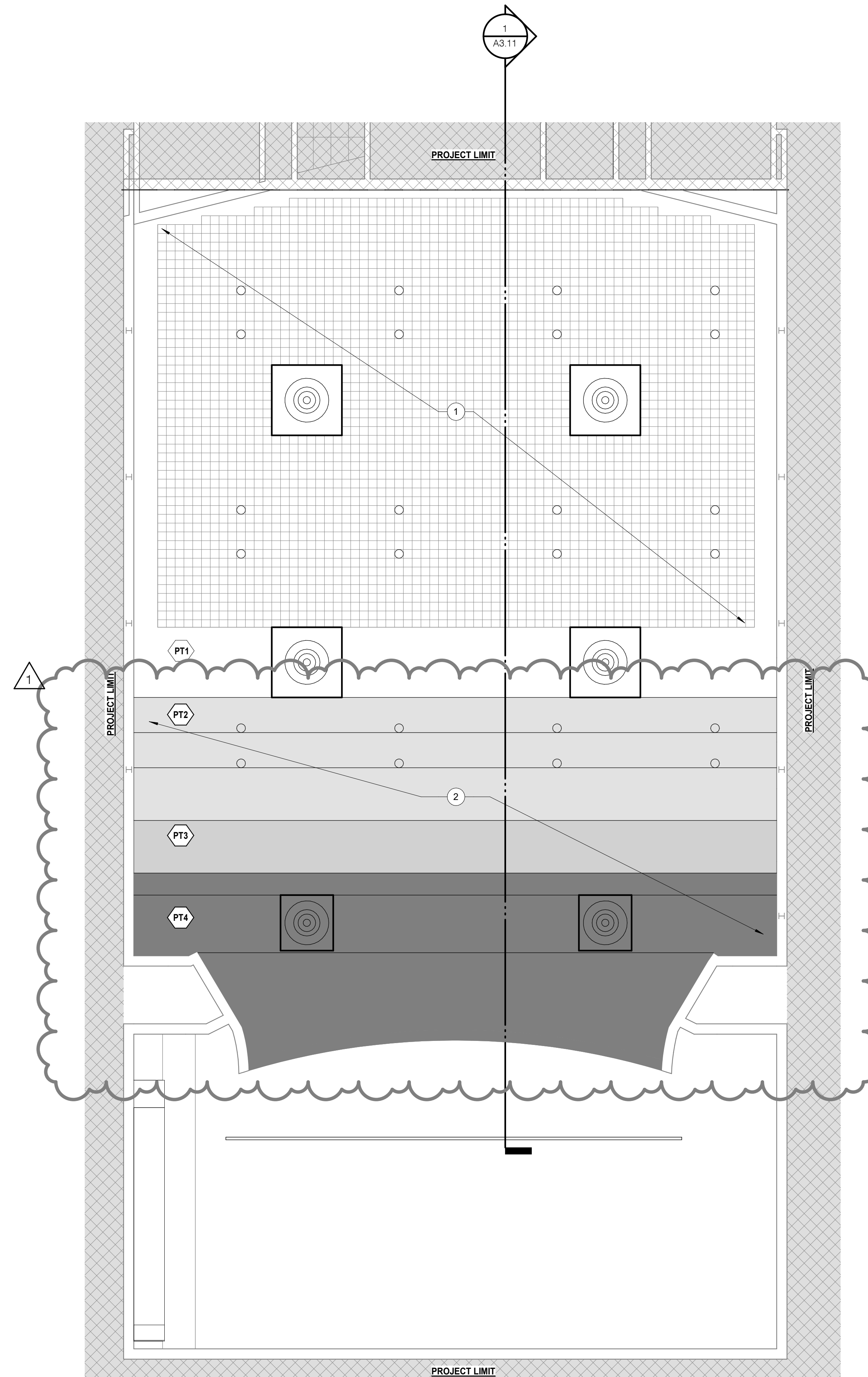
BEN LOMOND HIGH SCHOOL AUDITORIUM REMODEL
BEN LOMOND HIGH SCHOOL
1080 9TH STREET, OGDEN, UT 84404

OGDEN SCHOOL DISTRICT


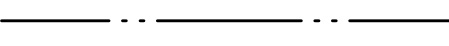

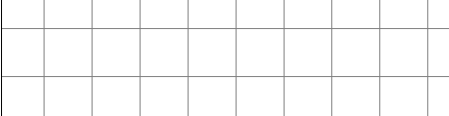
TITLE	PROJECT	CLIENT

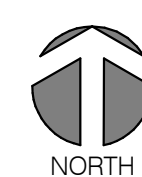
JOB NO: 230109

A1.21



CEILING LEGEND

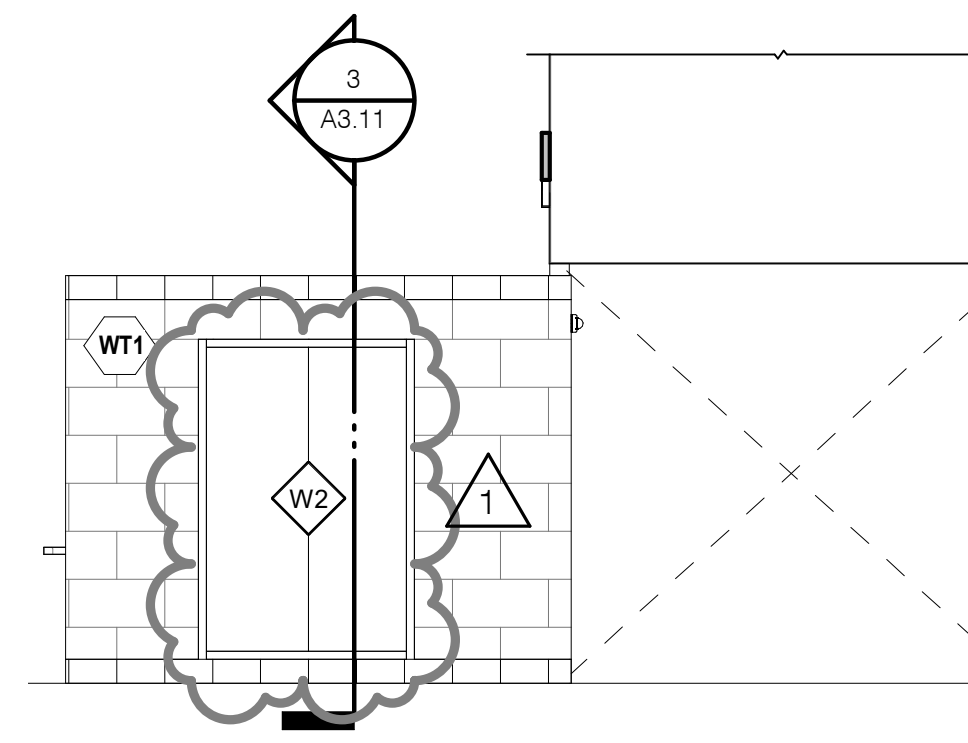
SYMBOL	DESCRIPTION
	NOT IN SCOPE OF WORK
	LEASE LINE
	EXISTING GYP. BD. SYSTEM
	EXISTING 1' X 1' ACT CEILING TILES



REFLECTED CEILING PLAN - AUDITORIUM

1/8" = 1'-0"

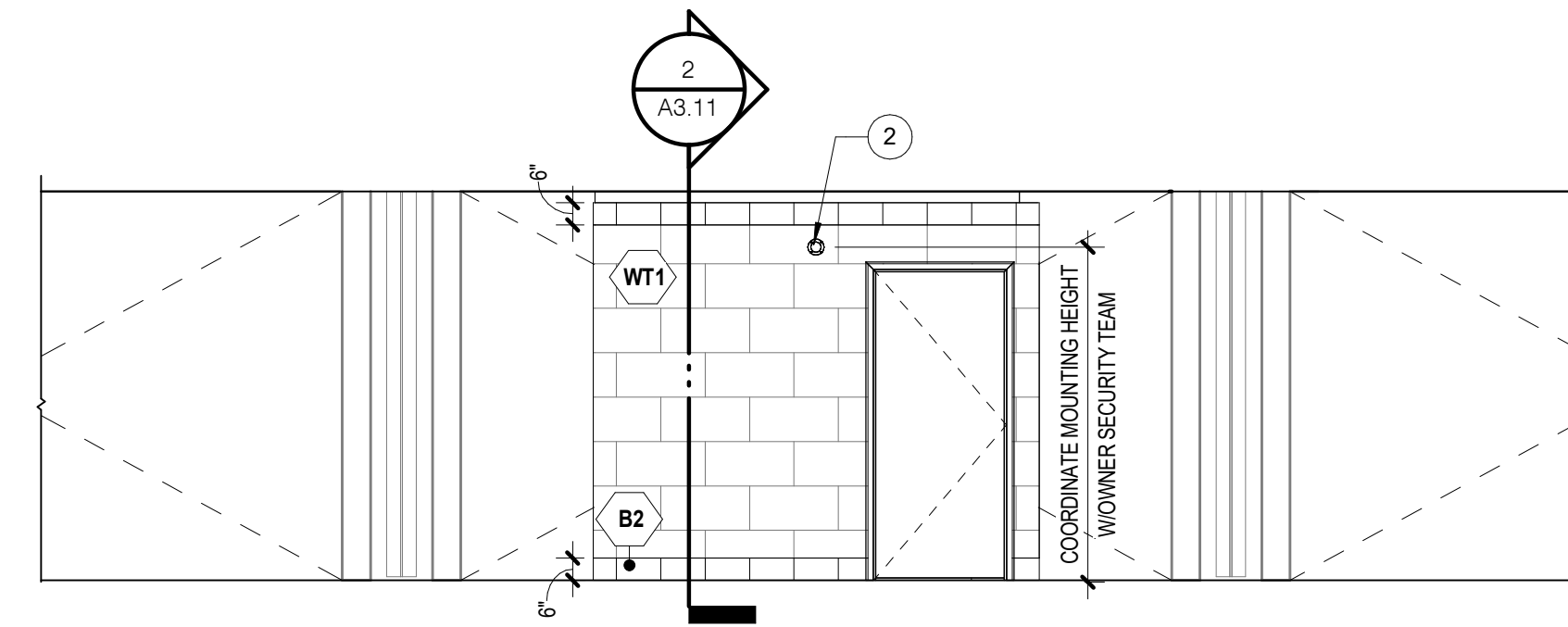
B



TICKET BOOTH ELEVATION - WEST

1/4" = 1'-0"

4



TICKET BOOTH ELEVATION - SOUTH

1/4" = 1'-0"

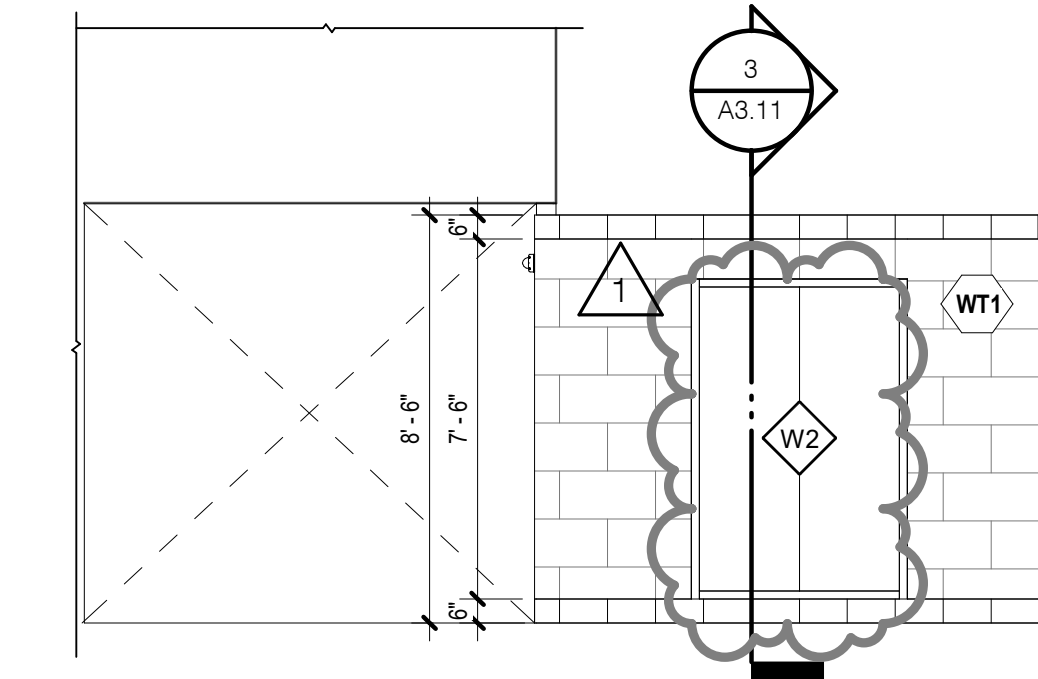
3



'E-HALL' SIGNAGE EXAMPLE

N.T.S.

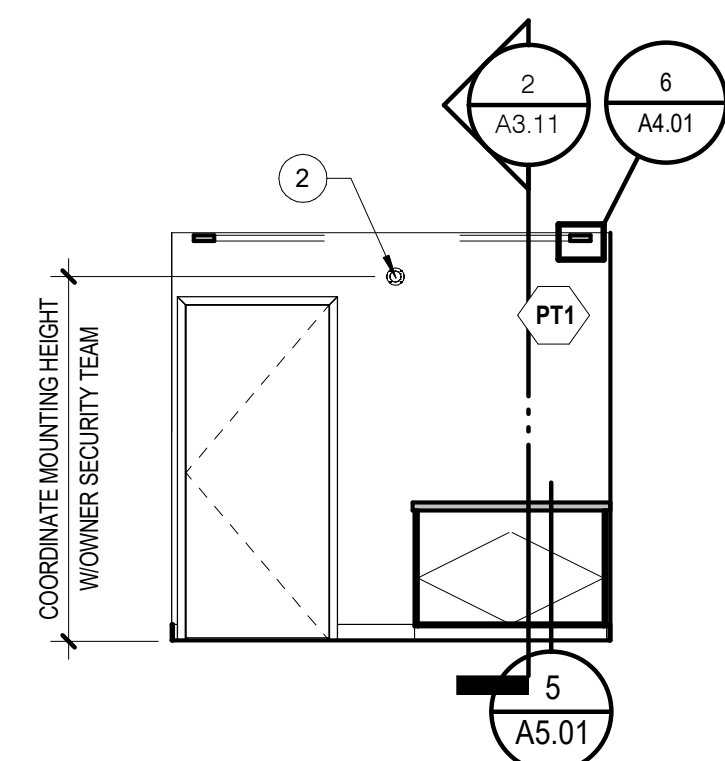
6



TICKET BOOTH ELEVATION - EAST

1/4" = 1'-0"

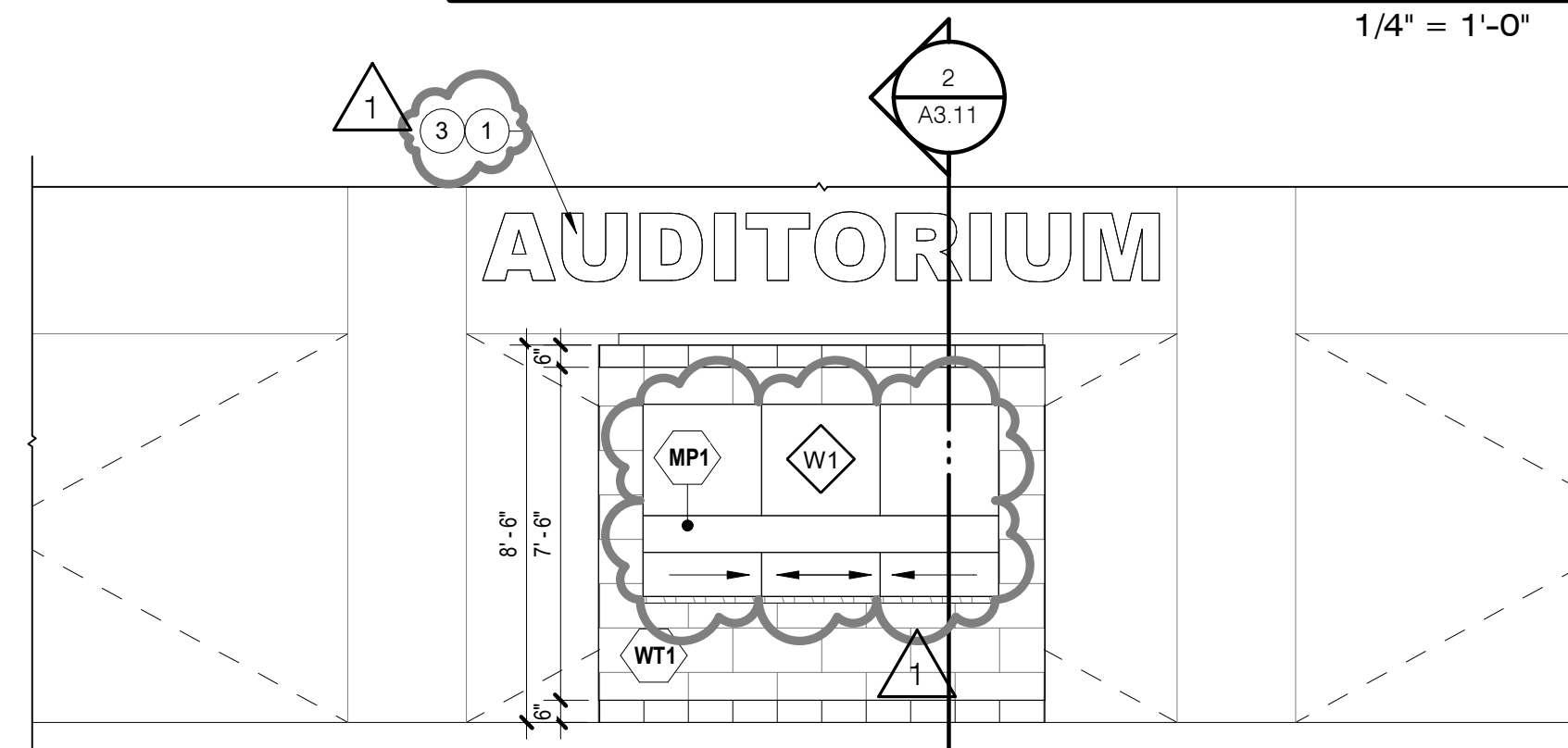
2



TICKET BOOTH INTERIOR ELEVATION

1/4" = 1'-0"

5



TICKET BOOTH ELEVATION - NORTH

1/4" = 1'-0"

1

SHEET NOTES

- A. ALL DIMENSIONS ARE TO FINISHED FACE, UNLESS NOTED OTHERWISE.
- B. PRIOR TO COMMENCEMENT OF WORK, CONTRACTOR SHALL FIELD VERIFY ALL EXISTING CONDITIONS, INCLUDING BUT NOT LIMITED TO DIMENSIONS, UTILITY LOCATIONS & UTILITY SIZES.
- C. SHOULD ANY CONDITION ARISE WHERE THE INTENT OF DRAWINGS ARE IN DOUBT OR THERE IS A DISCREPANCY BETWEEN DRAWINGS & FIELD CONDITIONS, THE CONTRACTOR SHALL NOTIFY THE ARCHITECT IN WRITING FOR CLARIFICATION. RECORD ANY DISCREPANCY ON A REPRODUCIBLE DOCUMENT & TRANSIT TO THE ARCHITECT FOR PROJECT RECORD, COORDINATION & NECESSARY RESOLUTION PRIOR TO CONTINUING WORK.
- D. ALTHOUGH NOTES MAY BE GIVEN ONLY ONCE, MANY NOTES ARE TYPICAL FOR SIMILAR DETAILS & CONDITIONS.
- E. SEE ELECTRICAL DRAWINGS FOR ADDITIONAL INFORMATION & COORDINATE.

KEYNOTES

- 1 NEW 'AUDITORIUM' SIGNAGE SIM. TO 'E-HALL' SIGNAGE IN PHOTO B/A2.21.
- 2 NEW SECURITY CAMERA. SEE ELECTRICAL DRAWINGS AND COORDINATE.
- 3 'AUDITORIUM' SIGNAGE IS TO BE 20" TALL BRUSHED/NATURAL SATIN FINISH ALUMINUM LETTERS THAT ARE 1/2" THICK AND ATTACHED WITH A 1/4" STANDOFF. CONTRACTOR WILL FIELD VERIFY ACTUAL SIZE, FINISH, AND ATTACHMENT AND COORDINATE NEW SIGNAGE TO MATCH EXISTING SIGNAGE. A SAMPLE WILL BE REQUIRED AS PART OF THE CONSTRUCTION SUBMITTAL.

FINISH LEGEND

MARK	DESCRIPTION
AP1	ACOUSTIC WALL PANELS; ARMSTRONG WORLD INDUSTRIES 4'-0" L TECTUM FABRIC WALLS, 2" PANEL THICKNESS, BEVELED CORNERS, COLOR SELECTED FROM FULL RANGE OF MANUFACTURER'S COLOR STANDARD
AP2	ACOUSTIC WALL PANELS; ARMSTRONG WORLD INDUSTRIES 6'-0" L TECTUM FABRIC WALLS, 2" PANEL THICKNESS, BEVELED CORNERS, COLOR SELECTED FROM FULL RANGE OF MANUFACTURER'S COLOR STANDARD
AP3	ACOUSTIC WALL PANELS; ARMSTRONG WORLD INDUSTRIES 8'-0" L TECTUM FABRIC WALLS, 2" PANEL THICKNESS, BEVELED CORNERS, COLOR SELECTED FROM FULL RANGE OF MANUFACTURER'S COLOR STANDARD
B1	RUBBER WALL BASE; ROPPE 4" COVED RUBBER WALL BASE, BLACK #100
B2	TILE BASE; DAL TILE PRIME, STAMINA GREY 12" x 24" WALL TILE, VERTICAL
F1	VCT; ARMSTRONG FLOORING STANDARD EXCELO IMPERIAL TEXTURE, 12" X 12" POLAR WHITE VCT TILE TO MATCH EXISTING CHANGING ROOM
F3	LVT; SHAW CONTRACT COMPOUND+CAST, 24" X 24" X .25MM, COLOR
MP1	PRE-FINISHED METAL PANEL, POWDER COATED 16 GA BREAK METAL
RL1	LAMINATE; WILSON ART TRACELESS ULTRA MATTE, NILE VELVET 15515
RL2	LAMINATE; WILSON ART STANDARD LAMINATE MATTE FINISH, KENSINGTON MAPLE 10776-60
PT1	PAINT; SHERWIN WILLIAMS COLOR: OWNER APPROVED
PT2	PAINT; SHERWIN WILLIAMS COLOR: OWNER APPROVED ACCENT COLOR 1
PT3	PAINT; SHERWIN WILLIAMS COLOR: OWNER APPROVED ACCENT COLOR 2
PT4	PAINT; SHERWIN WILLIAMS COLOR: OWNER APPROVED ACCENT COLOR 3
SS1	SOLID SURFACE COUNTERTOP; WILSONART SOLID SURFACE, QUIET SWIRL 9241SS
WC1	WALL COVERING; REPURPOSED WAINSCOTTING SALVAGED FROM AUDITORIUM SIDE WALLS
WP1	FINISH TRIM; WOOD TRIM COLOR: STAIN TO MATCH EXISTING WOOD WAINSCOTTING
WT1	WALL TILE; DAL TILE PRIME, STAMINA GREY 12" x 24" WALL TILE

- FINISH LEGEND NOTES:**
1. SEE FINISH SCHEDULE ON SHEET IA1.11 FOR ADDITIONAL INFORMATION AND COORDINATE
 2. ALL MATERIALS AND FINISHES SPECIFIED ARE CONSIDERED BASES OF DESIGN
 3. NOT ALL MATERIAL TAGS MAY BE USED ON THIS SHEET
 4. ALL WALLS SCHEDULED TO RECEIVE PAINT SHALL HAVE A LEVEL 5 FINISH
 5. ALL WALLS SCHEDULED TO RECEIVE WALL COVERINGS SHALL HAVE A LEVEL 4 FINISH
 6. FLOOR TILE INSTALLATION FLATNESS SHALL BE PER ANSI A108.02 AND MAXIMUM ACCEPTABLE LIPAGE SHALL BE PER ANSI A137.1

KNIT

7250 Peak Drive, Suite 216
Las Vegas, Nevada 89128
Phone 702.363.2222
KnitStudios.com

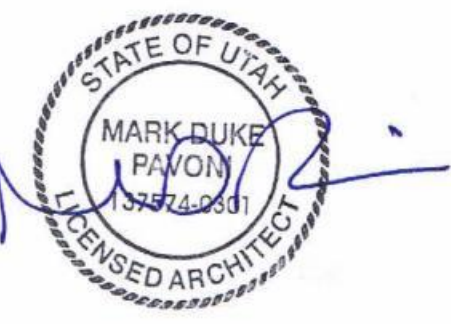
THESE DOCUMENTS HAVE BEEN PRODUCED AS AN INSTRUMENT OF SERVICE AND ARE INTENDED SOLELY FOR THE PURPOSE OF CONSTRUCTING, USING AND MAINTAINING THE PROJECT KNIT AS THE ARCHITECT OF RECORD FOR THE PROJECT. RETAINERSHIP OF THESE DOCUMENTS OR ANY USE OF THESE DOCUMENTS OR USE OF THIS DESIGN, IDEAS OR CONCEPTS DESCRIBED HEREIN IN WHOLE OR PART BY ANY MEANS WHATSOEVER IS STRICTLY PROHIBITED EXCEPT BY WRITTEN CONSENT OF KNIT.

REPRODUCTION OF THIS DOCUMENT IS STRICTLY PROHIBITED EXCEPT BY WRITTEN CONSENT OF KNIT.

COPYRIGHT 2021 KNIT

ISSUE DATE: 02.07.2024

REV	DATE	COMMENT
1	03.06.24	ADDENDUM #03



ELEVATIONS - TICKET BOOTH

BEN LOMOND HIGH SCHOOL AUDITORIUM REMODEL
BEN LOMOND HIGH SCHOOL
1080 9TH STREET, OGDEN, UT 84404

OGDEN SCHOOL DISTRICT

TITLE	PROJECT	CLIENT

JOB NO: 230109

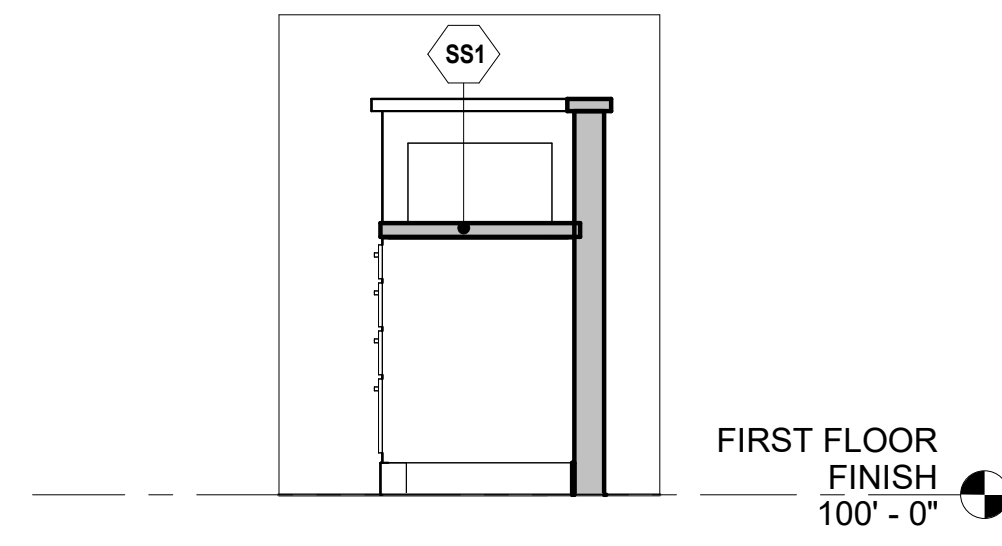
A2.21

SHEET NOTES

- ALL DIMENSIONS ARE TO FINISHED FACE, UNLESS NOTED OTHERWISE.
- PRIOR TO COMMENCEMENT OF WORK, CONTRACTOR SHALL FIELD VERIFY ALL EXISTING CONDITIONS, INCLUDING BUT NOT LIMITED TO DIMENSIONS, UTILITY LOCATIONS & UTILITY SIZES.
- SHOULD ANY CONDITION ARISE WHERE THE INTENT OF DRAWINGS ARE IN DOUBT OR THERE IS A DISCREPANCY BETWEEN DRAWINGS & FIELD CONDITIONS, THE CONTRACTOR SHALL NOTIFY THE ARCHITECT IN WRITING FOR CLARIFICATION. RECORD ANY DISCREPANCY ON A REPRODUCIBLE DOCUMENT & TRANSIT TO THE ARCHITECT FOR PROJECT RECORD, COORDINATION & NECESSARY RESOLUTION PRIOR TO CONTINUING WORK.
- ALTHOUGH NOTES MAY BE GIVEN ONLY ONCE, MANY NOTES ARE TYPICAL FOR SIMILAR DETAILS & CONDITIONS.
- SEE ELECTRICAL DRAWINGS FOR ADDITIONAL INFORMATION & COORDINATE.

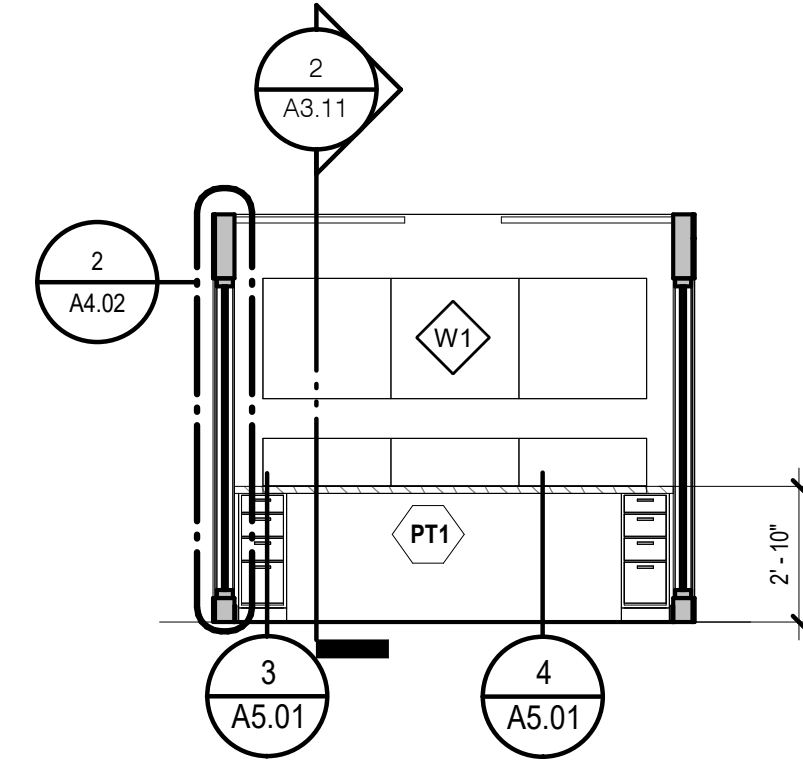
KEYNOTES

- ADD ALT #4 OPTION 1: EXTEND CONSTRUCTION OF SIDEWALL UPPER BARREL TO FINISH FLOOR. PATCH AND REPAIR SURFACE AND PREPARE TO PAINT NEW CONSTRUCTION AS IN ADD ALTERNATE #01, BOTH SIDEWALLS. SEE ADD ALT #4 AUDITORIUM SIDEWALL NOTES ON SHEET AD1.11 & A1.11.
- ADD ALT #4 OPTION 2: INSTALL BARREL SOUND DIFFUSERS, BOTH SIDEWALLS. BASIS OF DESIGN: QTS ACC-U-SOUND BARREL SHAPED DIFFUSERS, BOTH SIDEWALLS. SEE ADD ALT #4 AUDITORIUM SIDEWALL NOTES ON SHEET AD1.11 & A1.11.



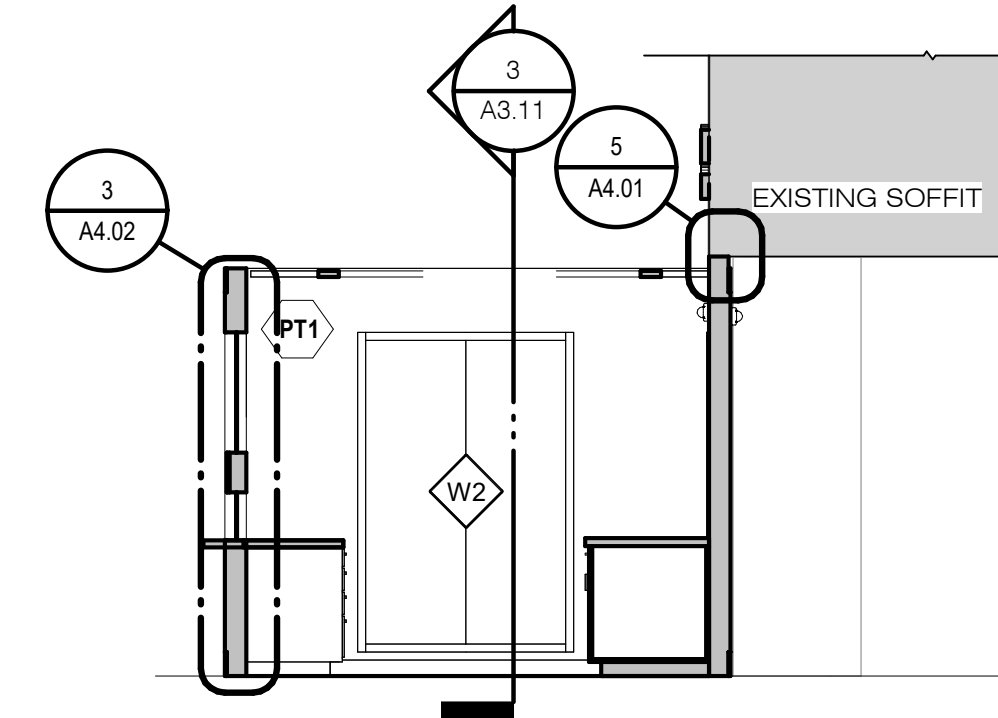
SECTION - SOUND BOOTH 4

1/2" = 1'-0"



SECTION - TICKET BOOTH 3

1/4" = 1'-0"



SECTION - TICKET BOOTH 2

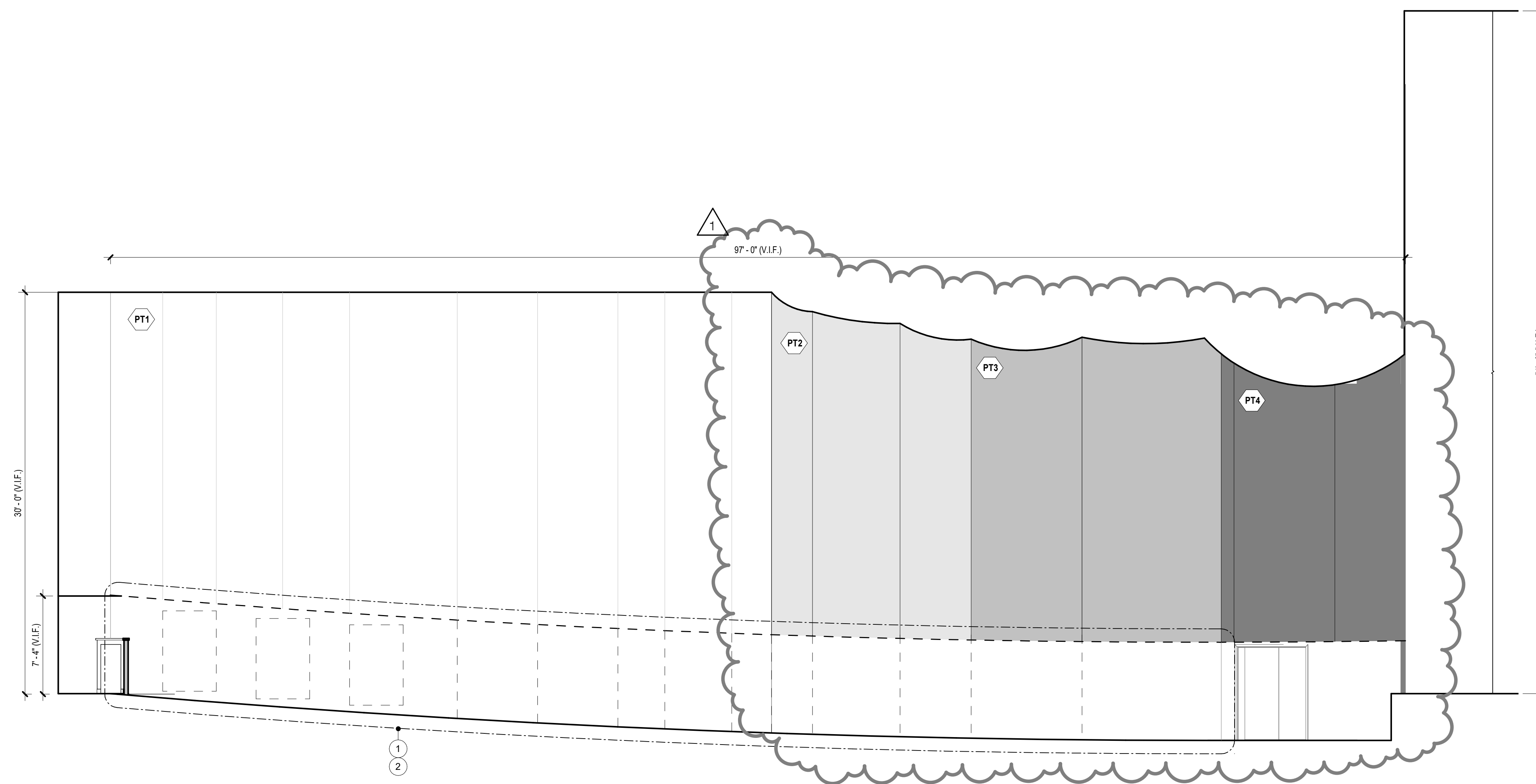
1/4" = 1'-0"

FINISH LEGEND

MARK	DESCRIPTION
AP1	ACOUSTIC WALL PANELS; ARMSTRONG WORLD INDUSTRIES 4'-0" L TECTUM FABRIC WALLS, 2" PANEL THICKNESS, BEVELED CORNERS, COLOR SELECTED FROM FULL RANGE OF MANUFACTURER'S COLOR STANDARD
AP2	ACOUSTIC WALL PANELS; ARMSTRONG WORLD INDUSTRIES 6'-0" L TECTUM FABRIC WALLS, 2" PANEL THICKNESS, BEVELED CORNERS, COLOR SELECTED FROM FULL RANGE OF MANUFACTURER'S COLOR STANDARD
AP3	ACOUSTIC WALL PANELS; ARMSTRONG WORLD INDUSTRIES 8'-0" L TECTUM FABRIC WALLS, 2" PANEL THICKNESS, BEVELED CORNERS, COLOR SELECTED FROM FULL RANGE OF MANUFACTURER'S COLOR STANDARD
B1	RUBBER WALL BASE; ROPPE 4" COVED RUBBER WALL BASE, BLACK #100
B2	TILE BASE; DAL TILE PRIME, STAMINA GREY 12" x 24" WALL TILE, VERTICAL
F1	VCT; ARMSTRONG FLOORING STANDARD EXCELOX IMPERIAL TEXTURE, 12" X 12" POLAR WHITE VCT TILE TO MATCH EXISTING CHANGING ROOM
F3	LVT; SHAW CONTRACT COMPOUND+CAST, 24" X 24" X .25MM, COLOR
MP1	PRE-FINISHED METAL PANEL, POWDER COATED 16 GA BREAK METAL
PL1	LAMINATE; WILSON ART TRACELESS ULTRA MATTE, NILE VELVET 15515
PL2	LAMINATE; WILSON ART STANDARD LAMINATE MATTE FINISH, KENSINGTON MAPLE 10776-60
PT1	PAINT; SHERWIN WILLIAMS COLOR: OWNER APPROVED
PT2	PAINT; SHERWIN WILLIAMS COLOR: OWNER APPROVED ACCENT COLOR 1
PT3	PAINT; SHERWIN WILLIAMS COLOR: OWNER APPROVED ACCENT COLOR 2
PT4	PAINT; SHERWIN WILLIAMS COLOR: OWNER APPROVED ACCENT COLOR 3
SS1	SOLID SURFACE COUNTERTOP; WILSONART SOLID SURFACE, QUIET SWIRL 9241SS
WC1	WALL COVERING; REPURPOSED WAINSCOTTING SALVAGED FROM AUDITORIUM SIDE WALLS
WP1	FINISH TRIM; WOOD TRIM COLOR: STAIN TO MATCH EXISTING WOOD WAINSCOTTING
WT1	WALL TILE; DAL TILE PRIME, STAMINA GREY 12" x 24" WALL TILE

FINISH LEGEND NOTES:

- SEE FINISH SCHEDULE ON SHEET IA1.11 FOR ADDITIONAL INFORMATION AND COORDINATE
- ALL MATERIALS AND FINISHES SPECIFIED ARE CONSIDERED BASES OF DESIGN
- NOT ALL MATERIAL TAGS MAY BE USED ON THIS SHEET
- ALL WALLS SCHEDULED TO RECEIVE PAINT SHALL HAVE A LEVEL 5 FINISH
- ALL WALLS SCHEDULED TO RECEIVE WALL COVERINGS SHALL HAVE A LEVEL 4 FINISH
- FLOOR TILE INSTALLATION FLATNESS SHALL BE PER ANSI A108.02 AND MAXIMUM ACCEPTABLE LIPAGE SHALL BE PER ANSI A137.1



SECTION - AUDITORIUM 1

3/16" = 1'-0"

ISSUE DATE: 02.07.2024

REV	DATE	COMMENT
1	03.06.24	ADDENDUM #03

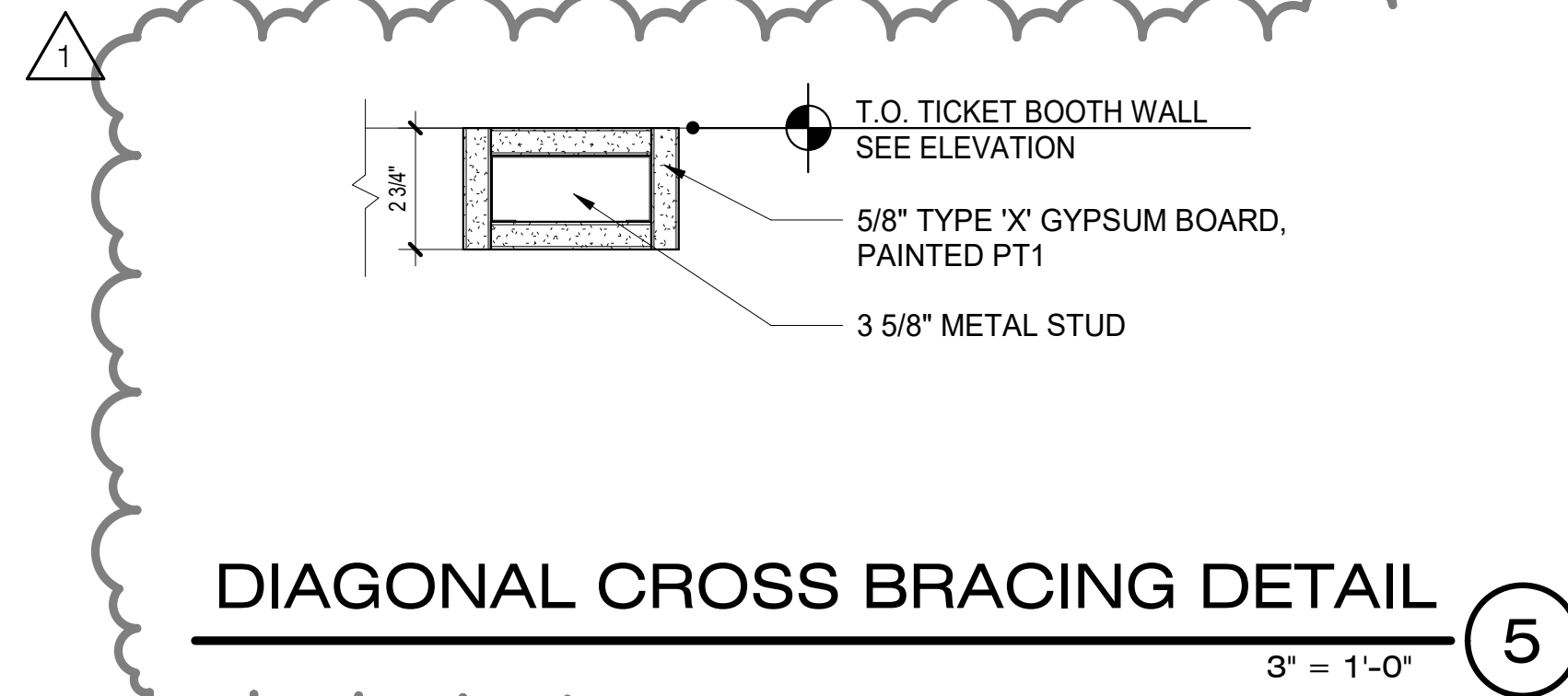


SECTIONS
BEN LOMOND HIGH SCHOOL AUDITORIUM REMODEL
BEN LOMOND HIGH SCHOOL
1080 9TH STREET, OGDEN, UT 84404
OGDEN SCHOOL DISTRICT

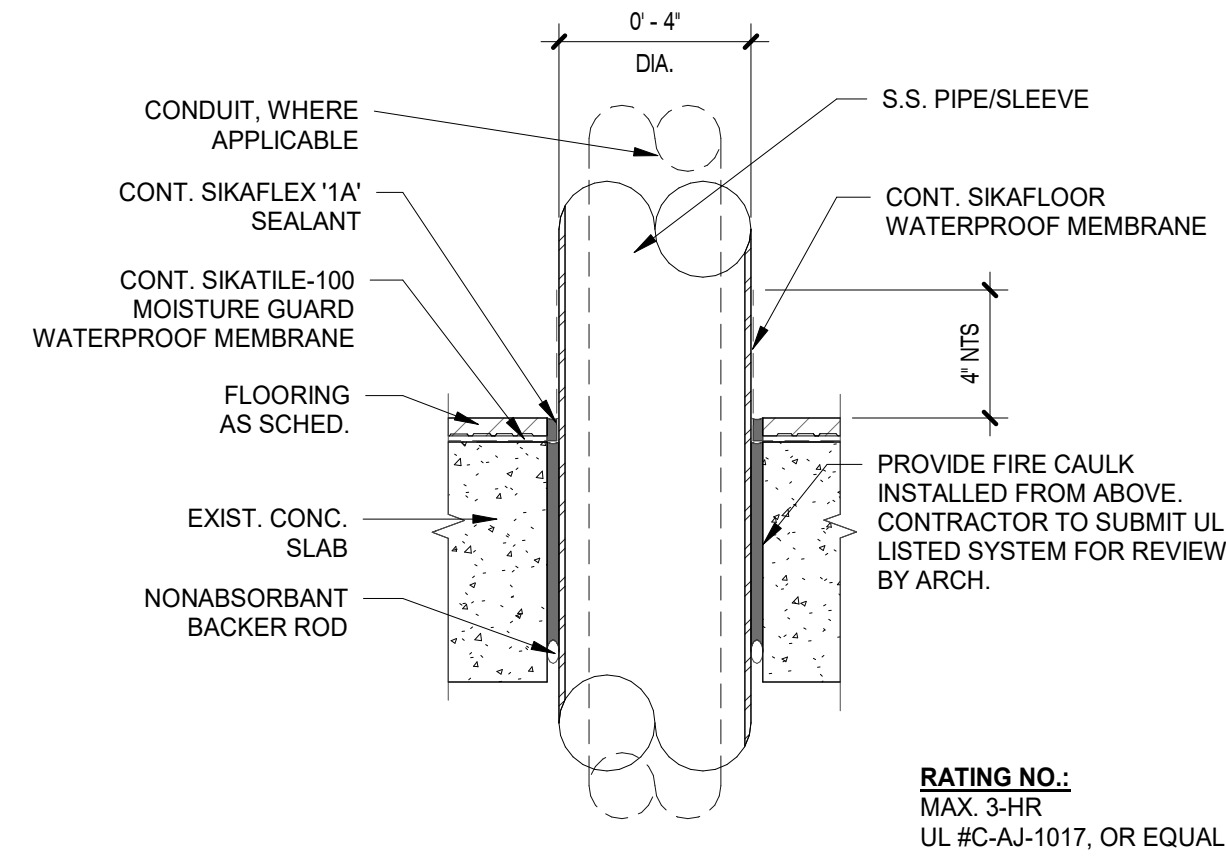
TITLE PROJECT CLIENT

JOB NO: 230109

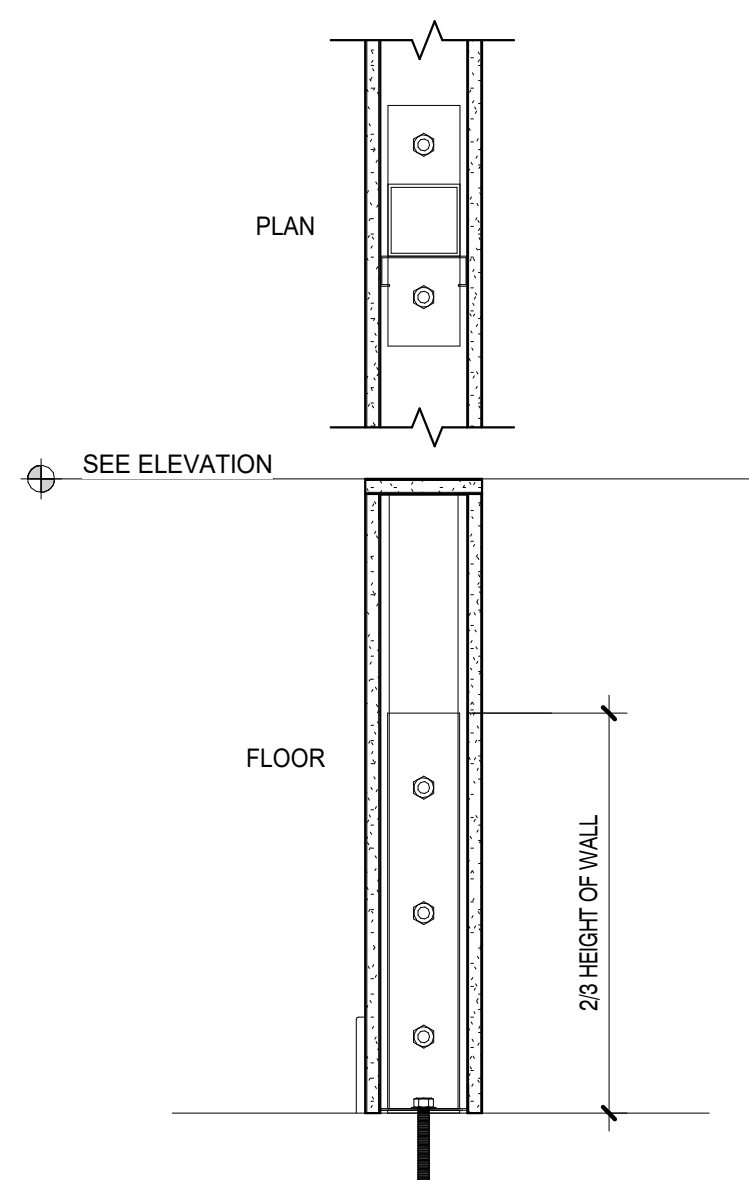
A3.11



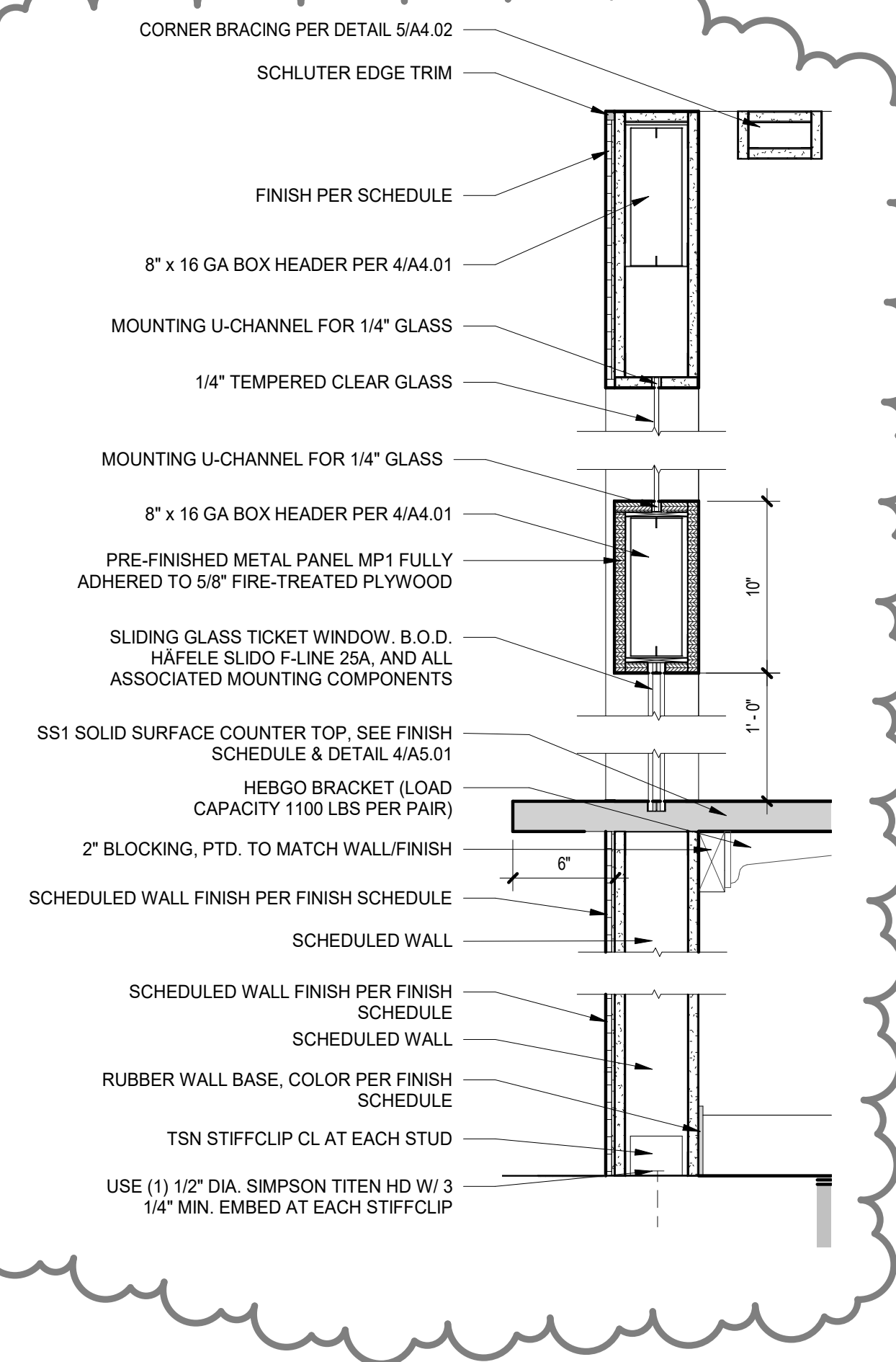
DIAGONAL CROSS BRACING DETAIL ⑤
3" = 1'-0"



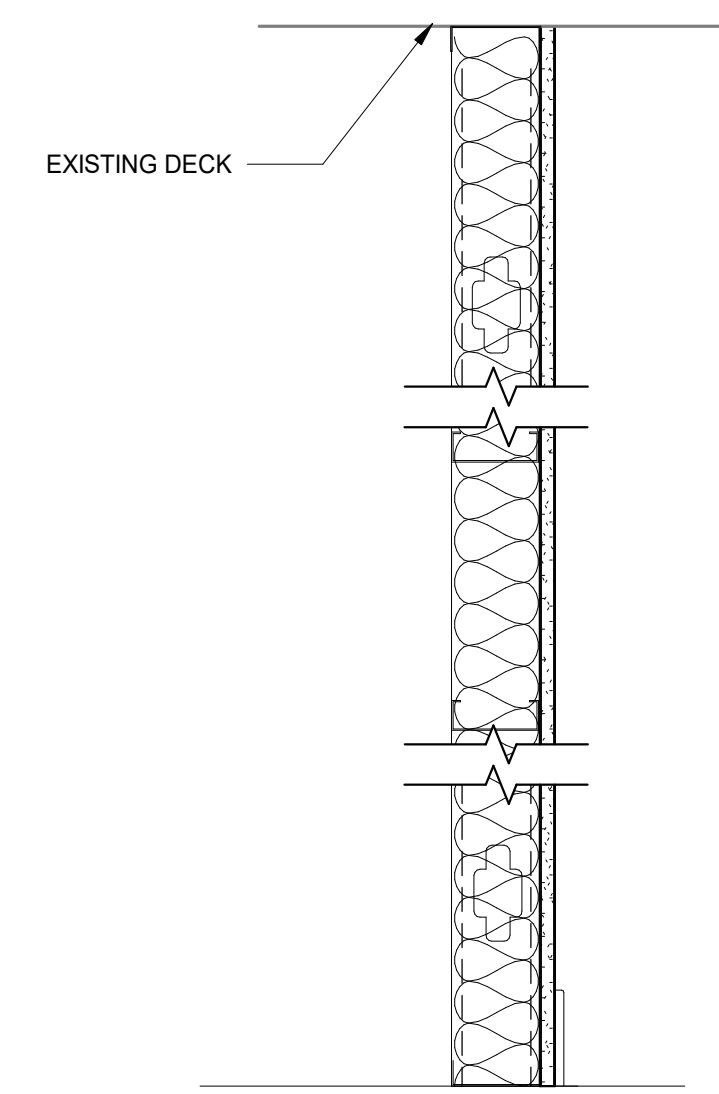
PIPE/ SLEEVE SLAB PENETRATION ④
3" = 1'-0"



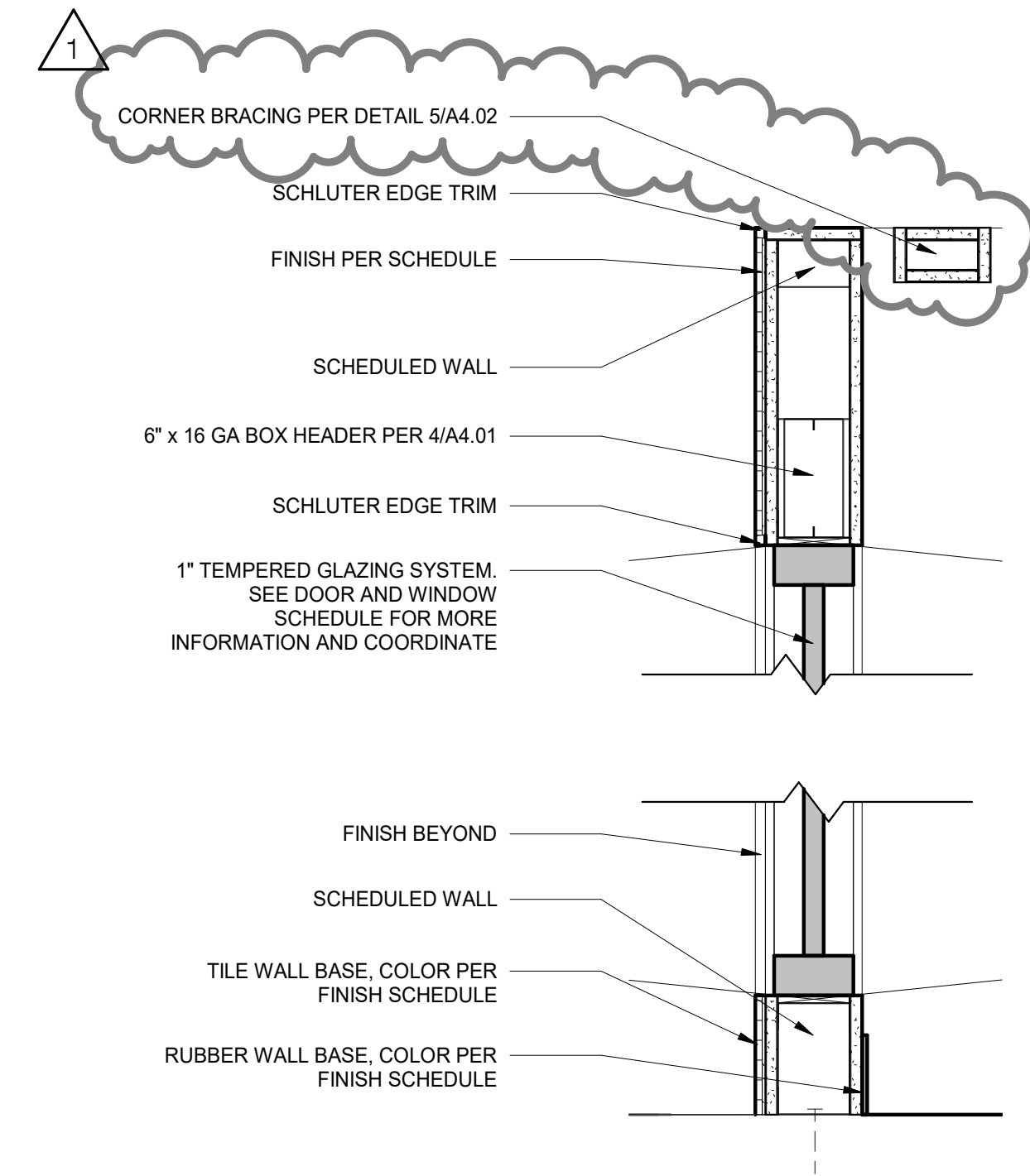
C WALL TYPE
C1: 3 5/8" 20 GA. (MIN.) METAL FRAMING AT 16" O.C. WITH (1) LAYER OF 5/8" TYPE 'X' GYPSUM BOARD ON EACH SIDE WITH 3"x3"x1/8" SQUARE STEEL TUBE AT ENDS AND 8'-0" O.C. MAX WITH 1/4" PLATE AND 1/2" SIMPSON AT-XP EPOXY WITH 1/2" DIAMETER F1554 GRADE 36 THREADED ROD WITH 3" MINIMUM EMBEDMENT. SET ANCHORS EACH SIDE. SCREW STUDS TO TUBE WITH #10 TEK'S AT 12" O.C.
C2: 2 1/2" 20 GA. (MIN.) METAL FRAMING AT 16" O.C. WITH (1) LAYER OF 5/8" TYPE 'X' GYPSUM BOARD ON EACH SIDE WITH 3"x3"x1/8" SQUARE STEEL TUBE AT ENDS AND 8'-0" O.C. MAX WITH 1/4" PLATE AND 1/2" SIMPSON AT-XP EPOXY WITH 1/2" DIAMETER F1554 GRADE 36 THREADED ROD WITH 3" MINIMUM EMBEDMENT. SET ANCHORS EACH SIDE. SCREW STUDS TO TUBE WITH #10 TEK'S AT 12" O.C.



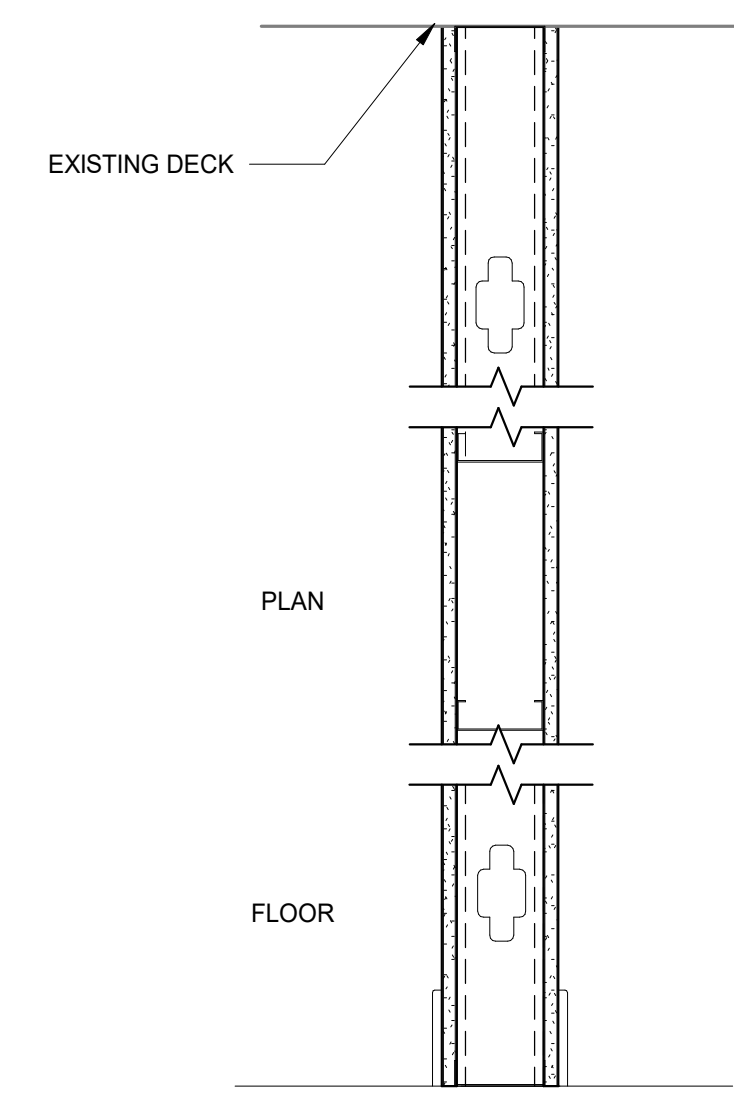
TICKET BOOTH SECTION - WALL SECTION @ TICKET COUNTER ③
1 1/2" = 1'-0"



B WALL TYPE
B1: 3 5/8" 20 GA. (MIN.) METAL FRAMING AT 16" O.C. WITH BATT INSULATION, (1) LAYER 5/8" TYPE 'X' GYPSUM BOARD ON ONE SIDE



TICKET BOOTH SECTION - WALL SECTION THRU STOREFRONT ②
1 1/2" = 1'-0"



A WALL TYPE
A1: 3 5/8" 20 GA. (MIN.) METAL FRAMING AT 16" O.C. WITH (1) LAYER 5/8" TYPE 'X' GYPSUM BOARD ON EACH SIDE.
A2: 3 5/8" 20 GA. (MIN.) METAL FRAMING AT 16" O.C. WITH (1) LAYER 5/8" TYPE 'X' GYPSUM BOARD ON INTERIOR AND (1) LAYER 5/8" DENS-SHIELD TILE BACKER ON EXTERIOR.

WALL TYPES ①
1 1/2" = 1'-0"

REV	DATE	COMMENT
1	03.06.24	ADDENDUM #03



WALL TYPES, SECTIONS, & TYPICAL DETAILS
BEN LOMOND HIGH SCHOOL AUDITORIUM REMODEL
BEN LOMOND HIGH SCHOOL
1080 9TH STREET, OGDEN, UT 84404
OGDEN SCHOOL DISTRICT

TITLE	PROJECT	CLIENT

JOB NO: 230109

A4.02

DOOR SCHEDULE

MARK	DOOR				FRAME				HARDWARE SET	REMARKS	FIRE RATING	MARK
	TYPE	WIDTH	HEIGHT	FINISH	TYPE	HEAD	JAMB	FINISH				
100A	EXISTING	EXISTING	EXISTING	EXISTING	EXISTING	EXISTING	EXISTING	EXISTING	01			100A
100B	A	3'-0"	7'-0"	PRE-FINISHED TO MATCH EXISTING	EXISTING	EXISTING	EXISTING	EXISTING	02			100B
101	A	3'-0"	7'-0"	PRE-FINISHED TO MATCH EXISTING	1	1/A6.01	2/A6.01	FINISHED TO MATCH EXISTING	01			101

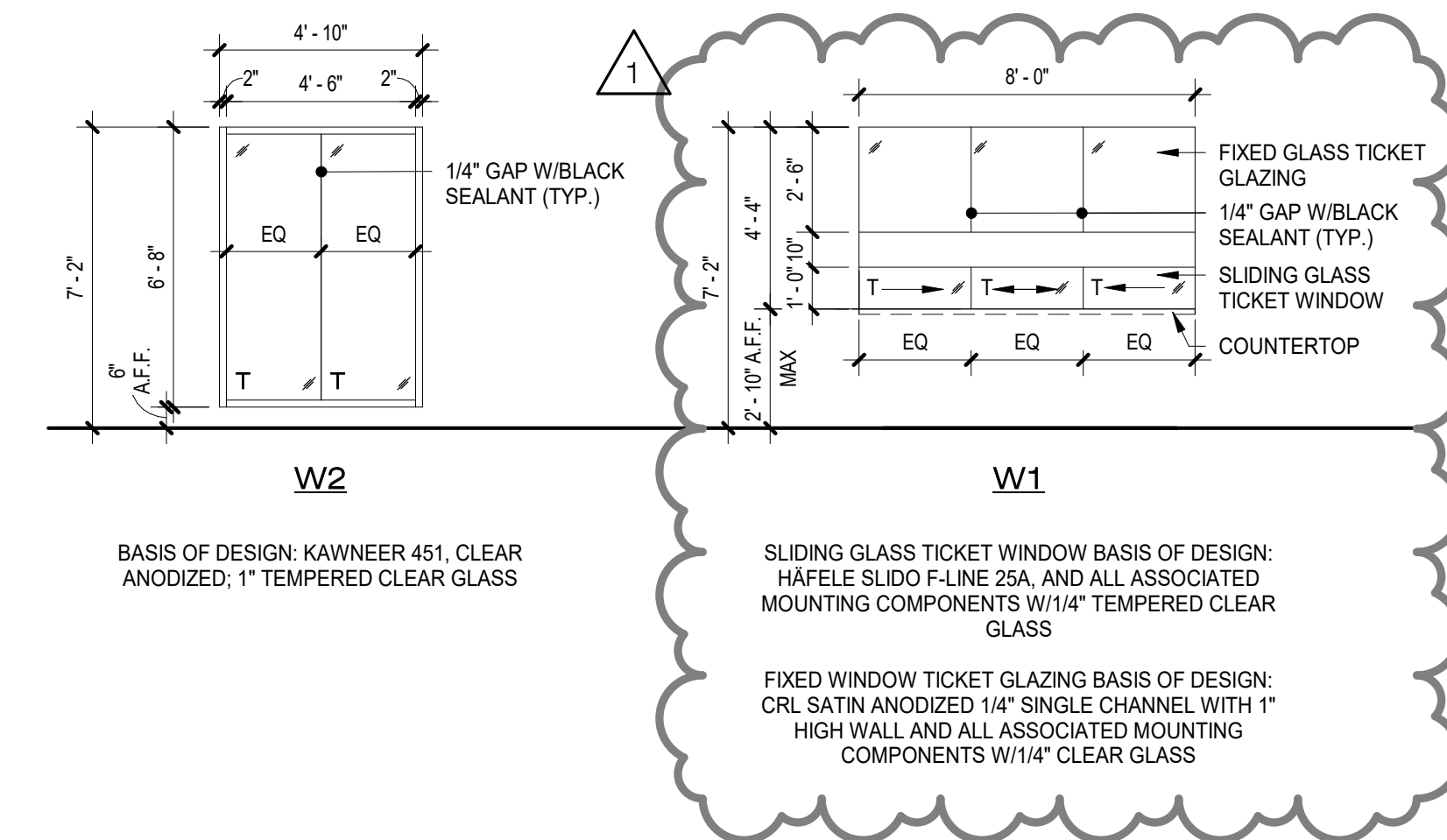
DOOR HARDWARE SET 01 - CLASSROOM FUNCTION

QTY:	DESCRIPTION:	CATALOG NUMBER:	FINISH:	MANUFACTURER:
(3) EA	HINGE	5BB1 4.5 X 4.5	TO MATCH EXISTING	IVES
(1) EA	CLASSROOM LOCK	195	TO MATCH EXISTING	MARKS
(1) EA	WALL STOP	WS406/407CCV	TO MATCH EXISTING	IVES
(1) EA	KICK PLATE 18" X 2" LDW	8400	TO MATCH EXISTING	IVES
(1) SET	SILENCERS	SR64	TO MATCH EXISTING	IVES

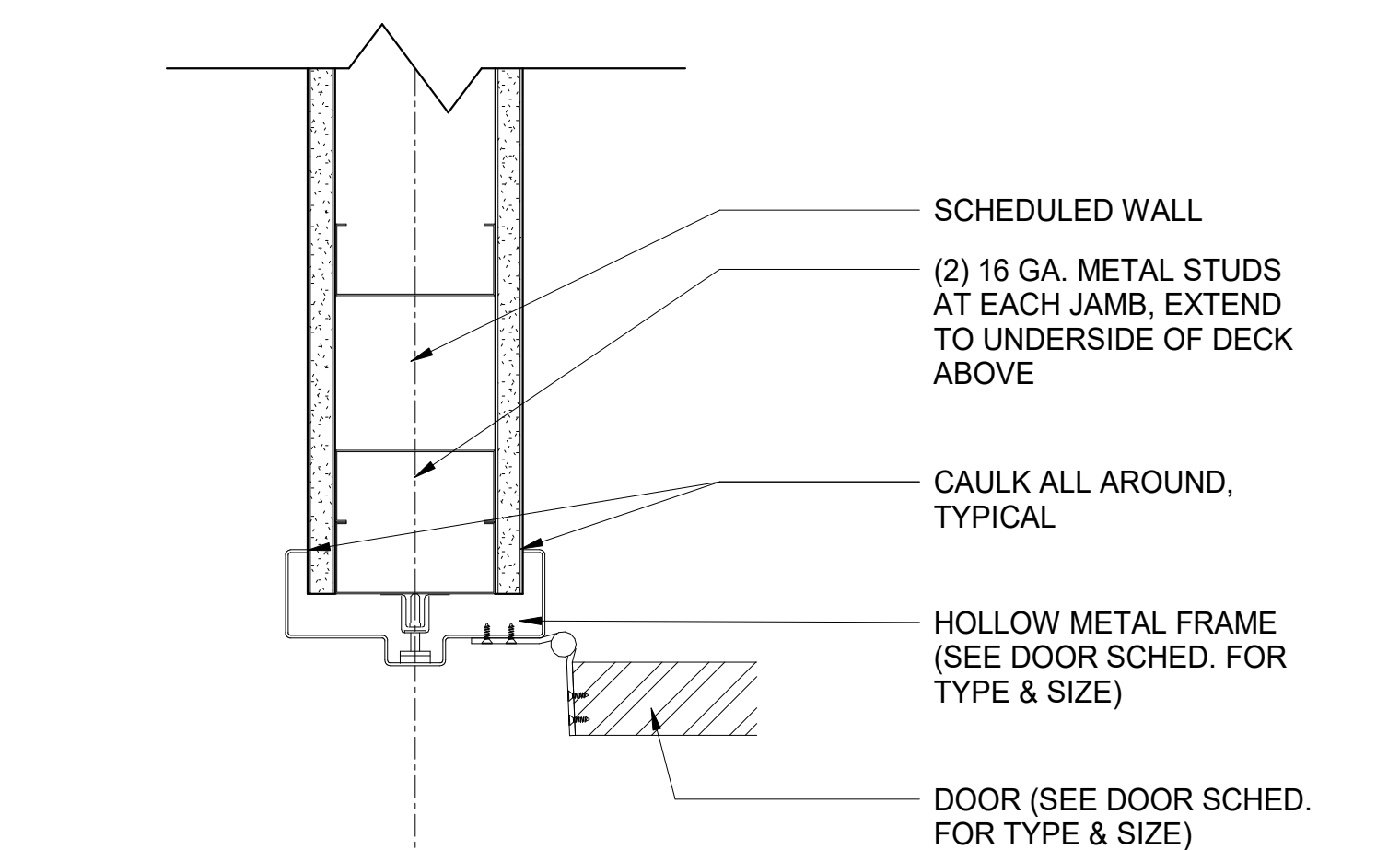
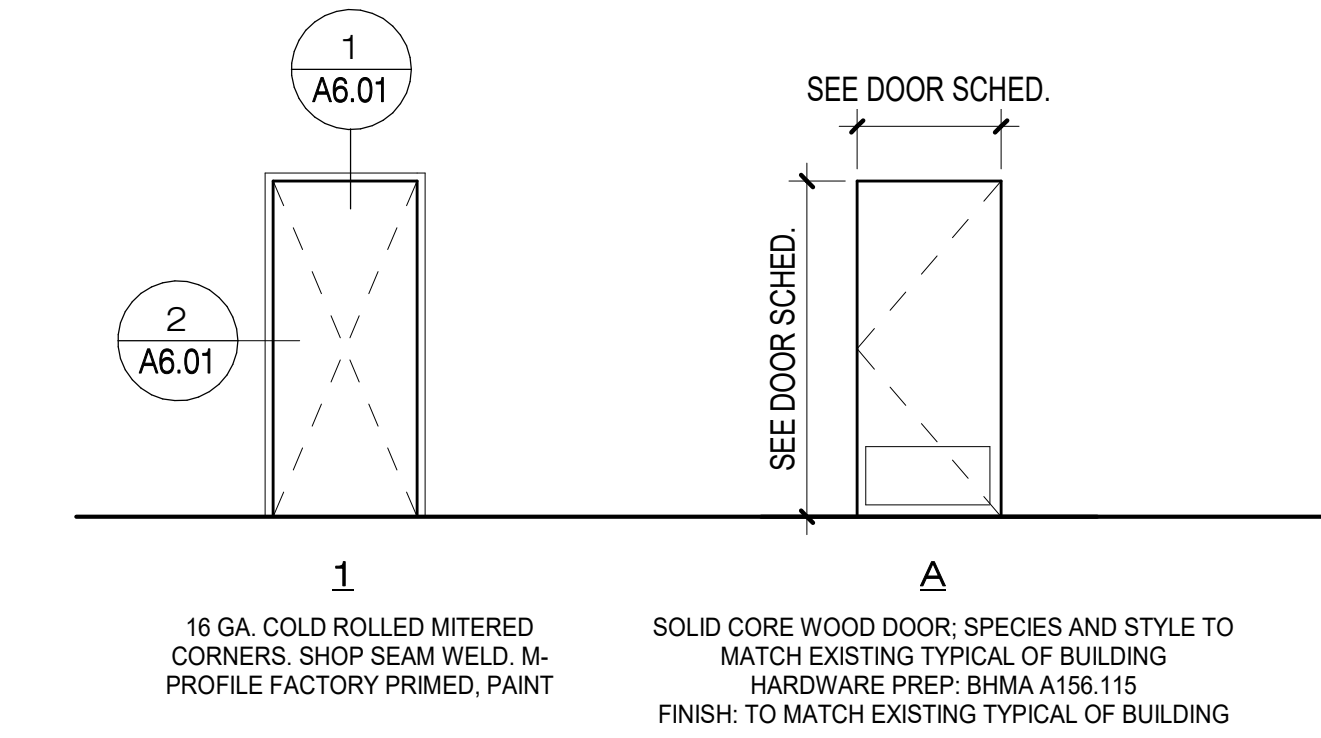
DOOR HARDWARE SET 02 - STORAGE ROOM FUNCTION

QTY:	DESCRIPTION:	CATALOG NUMBER:	FINISH:	MANUFACTURER:
(3) EA	HINGE	5BB1 4.5 X 4.5	TO MATCH EXISTING	IVES
(1) EA	STOREROOM LOCK	195	TO MATCH EXISTING	MARKS
(1) EA	WALL STOP	WS406/407CCV	TO MATCH EXISTING	IVES
(1) EA	KICK PLATE 18" X 2" LDW	8400	TO MATCH EXISTING	IVES
(1) SET	SILENCERS	SR64	TO MATCH EXISTING	IVES

WINDOW SYSTEM TYPES



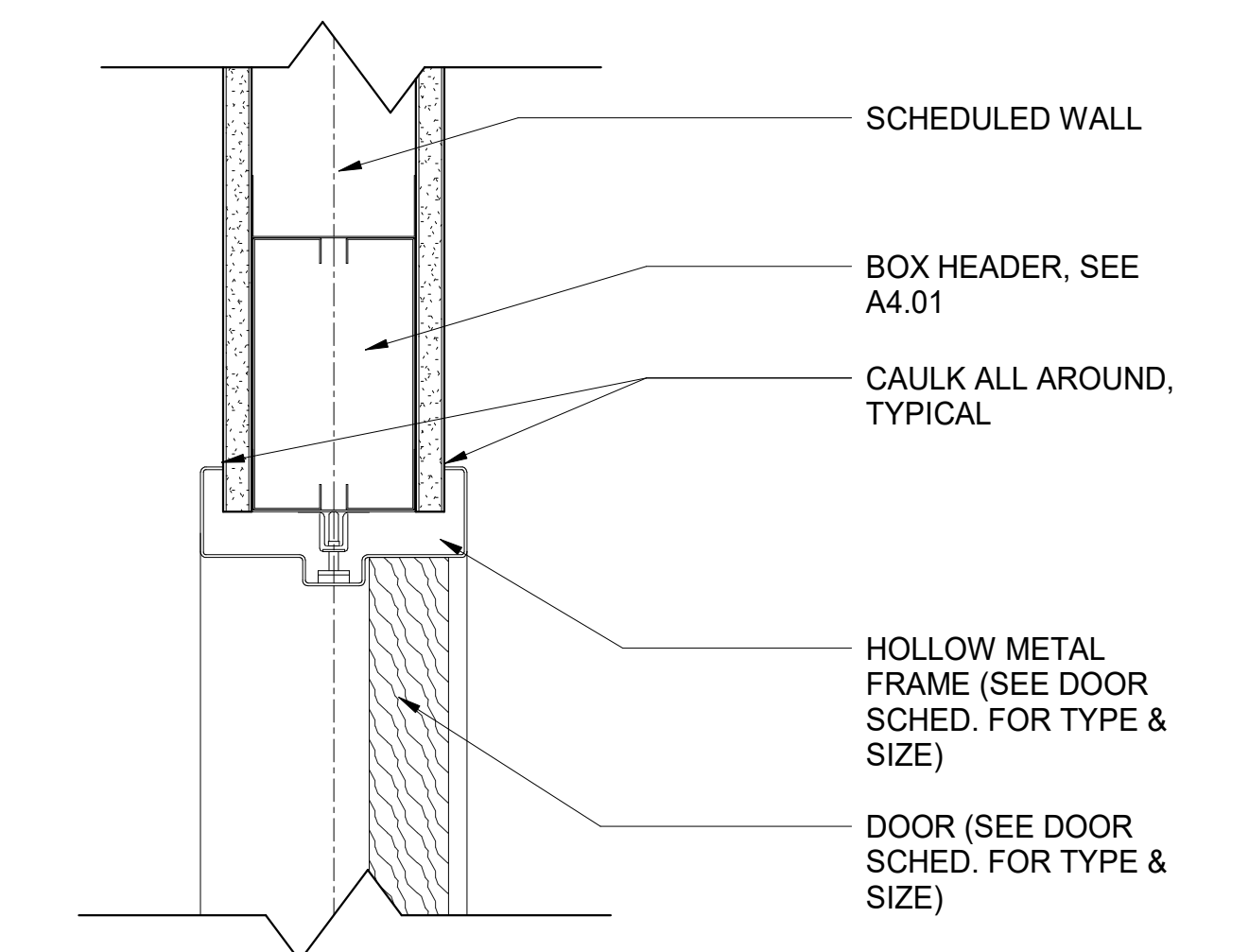
DOOR & FRAME TYPES



H.M. JAMB - DOOR

3" = 1'-0"

2



H.M. HEAD - DOOR

3" = 1'-0"

1

ISSUE DATE: 02.07.2024

REV	DATE	COMMENT
1	03.06.24	ADDENDUM #03



DOOR SCHEDULE, DOOR & WINDOW TYPES, & DETAILS

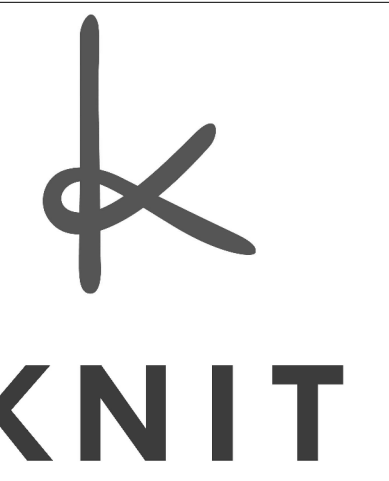
BEN LOMOND HIGH SCHOOL AUDITORIUM REMODEL
BEN LOMOND HIGH SCHOOL
1080 9TH STREET, OGDEN, UT 84404

OGDEN SCHOOL DISTRICT

TITLE	PROJECT	CLIENT

JOB NO: 230109

A6.01



7250 Peak Drive, Suite 216
Las Vegas, Nevada 89128
Phone 702.363.2222
KnitStudios.com

THESE DOCUMENTS HAVE BEEN PRODUCED AS AN INSTRUMENT OF SERVICE AND ARE INTENDED SOLELY FOR THE PURPOSE OF CONSTRUCTING, USING AND MAINTAINING THE PROJECT. KNIT AS THE ARCHITECT OF RECORD FOR THE PROJECT RETAINS OWNERSHIP OF THESE DOCUMENTS.
ANY USE OF THESE DOCUMENTS OR USE OF THIS DESIGN, IDEAS OR CONCEPTS DESCRIBED HEREIN IN WHOLE OR PART BY ANY MEANS WHATSOEVER IS STRICTLY PROHIBITED EXCEPT BY WRITTEN CONSENT OF KNIT.
REPRODUCTION OF THIS DOCUMENT IS STRICTLY PROHIBITED EXCEPT BY WRITTEN CONSENT OF KNIT.
COPYRIGHT 2021 KNIT