

# OGDEN SD VOCATIONAL BLDG ROOF REPLACEMENT

1950 MONROE BLVD, OGDEN, UT 84401



## LOCATION MAP



## KEY PLAN



AREA OF WORK:

## DRAWING INDEX

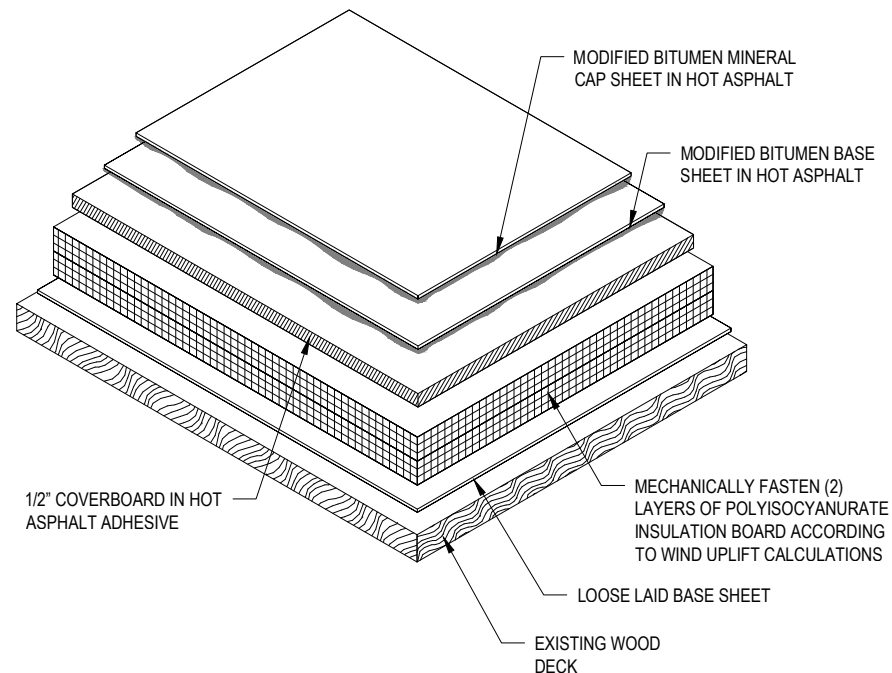
- SHT 1 - COVER SHEET
- SHT 2 - GENERAL NOTES
- SHT 3 - ROOF PLAN
- SHT 4 - DETAILS
- SHT 5 - DETAILS
- SHT 6 - DETAILS
- SHT 7 - DETAILS

OGDEN SD VOCATIONAL BLDG ROOF REPLACEMENT  
 1950 MONROE BLVD, OGDEN, UT 84401

PROJECT NO:	30-ES-190051	DATE:	05/31/19	DWG BY:	BRS	CHK BY:	JLP
PROJECT REP:	LOGAN DEWITT						

REVISION:

**TYPICAL ROOF CROSS SECTION DETAIL**



**TYPICAL ROOF CROSS SECTION**

**GENERAL NOTES**

**NOTES:**

1. STORE AND HANDLE ROOFING SHEETS IN A DRY, WELL-VENTILATED, WEATHER-TITE PLACE. STORE ROLLS OF FELT AND OTHER SHEET MATERIALS ON RAISED SURFACE. STAND ALL ROLL MATERIALS ON END. COVER ROLL GOODS WITH A CANVAS TARPULIN OR OTHER BREATHABLE MATERIAL (NOT POLYETHYLENE).
2. DO NOT LEAVE UNUSED MATERIALS ON THE ROOF WHEN ROOFING WORK IS NOT IN PROGRESS UNLESS PROTECTED FROM WEATHER AND OTHER MOISTURE SOURCES.
3. IT IS THE RESPONSIBILITY OF THE CONTRACTOR TO SECURE ALL MATERIAL AND EQUIPMENT ON THE JOB SITE. IF ANY MATERIAL OR EQUIPMENT IS STORED ON THE ROOF, THE CONTRACTOR MUST MAKE SURE THAT THE INTEGRITY OF THE DECK IS NOT COMPROMISED AT ANY TIME.
4. DO NOT APPLY ROOFING INSULATION OR MEMBRANE TO DAMP DECK SURFACE.
5. FULLY COMPLETE ALL MODIFIED BITUMINOUS MEMBRANE ROOFING FIELD ASSEMBLY WORK EACH DAY. PHASED CONSTRUCTION WILL NOT BE ACCEPTED.

**CUSTOMER NOTE:**

1. ALL OF MANUFACTURER'S SHOP FABRICATED MATERIAL WILL BE MANUFACTURED TO THE DIMENSIONS SHOWN, UNLESS OTHERWISE NOTED.
2. IT IS ESSENTIAL THAT ANY NECESSARY CHANGES, NOTATIONS OR REQUESTED INFORMATION BE CLEARLY NOTED ON THE SHOP DRAWINGS.
3. NO MATERIAL WILL BE CONSIDERED RELEASED FOR FABRICATION UNTIL ALL PERTINENT INFORMATION (i.e. COLOR, DIMENSIONS, MATERIAL CONFIG-URATION) HAS BEEN RECEIVED.

**SCOPE OF WORK NOTES**

**GENERAL NOTES:**

1. IT IS THE ROOFING CONTRACTOR'S RESPONSIBILITY TO FAMILIARIZE THEMSELVES WITH ALL DETAILS INVOLVED IN THE ROOFING CONTRACT.
2. ALL DRAWINGS ARE GRAPHIC REPRESENTATION OF APPROXIMATE LOCATION OF EXISTING AND NEW MATERIALS. IT IS THE CONTRACTOR'S RESPONSIBILITY TO VERIFY ALL EXISTING CONDITIONS PRIOR TO COMMENCEMENT OF WORK.
3. THE ROOFING CONTRACTOR SHALL PROTECT ALL ADJACENT SURFACES NOT SCHEDULED FOR WORK AND TO REPAIR ANY DAMAGED AREAS AS A RESULT OF CONTRACTOR WORK AT NO ADDITIONAL COST TO THE OWNER.
4. THE ROOFING CONTRACTOR SHALL BE RESPONSIBLE TO MAINTAIN WATER TIGHTNESS AND PROVIDE PROTECTION AT ANY/ALL OPENINGS IN THE ROOF LEFT AT THE END OF EACH CONSTRUCTION DAY.
5. ALL WOOD BLOCKING SHALL BE PRESSURE TREATED.
6. CONTRACTOR SHALL FIELD VERIFY ALL DIMENSIONS, CONDITIONS, AND QUANTITIES.

**ROOF SYSTEM SCOPE OF WORK:**

1. TEAR OFF EXISTING ROOF TO DECK
2. CONTRACTOR SHALL IDENTIFY AREAS OF DECK WHICH NEED REPAIR OR REPLACEMENT DURING TEAROFF
3. REMOVE SKYLIGHTS AS NOTED ON ROOF PLAN. INFILL OPENINGS TO MATCH EXISTING CONSTRUCTION.
4. LOOSE LAY TYPE II BASE SHEET
5. MECHANICALLY FASTEN (2) LAYERS OF POLYISOCYANURATE INSULATION BOARD (MIN. 6") ACCORDING TO WIND UPLIFT CALCULATIONS
6. INSTALL 1/2" COVERBOARD IN HOT ASPHALT ADHESIVE
7. INSTALL MODIFIED BITUMEN BASE SHEET IN HOT ASPHALT ADHESIVE
8. INSTALL MODIFIED BITUMEN MINERAL CAP SHEET IN HOT ASPHALT ADHESIVE
9. REFER TO PROJECT SPECIFICATION MANUAL FOR FURTHER INFORMATION.
10. ALL DETAILS TO BE INSTALLED IN ACCORDANCE WITH DETAILS ON DRAWINGS INCLUDED WITHIN THIS DRAWING PACKAGE AND IN ACCORDANCE WITH MANUFACTURER'S GUIDELINES.

**DESIGN CRITERIA**

**WIND UPLIFT REQUIREMENTS**

1. WIND SPEED: 120 MPH
2. BUILDING TYPE: ENCLOSED
3. EXPOSURE CATEGORY: C
4. IMPORTANCE CLASS: III
5. IMPORTANCE FACTOR: 1.00
6. DESIGN ROOF HEIGHT: 20'
7. TOPOGRAPHY FACTOR: 1.00
8. ROOF SLOPE: 1/4 UNITS PER 12

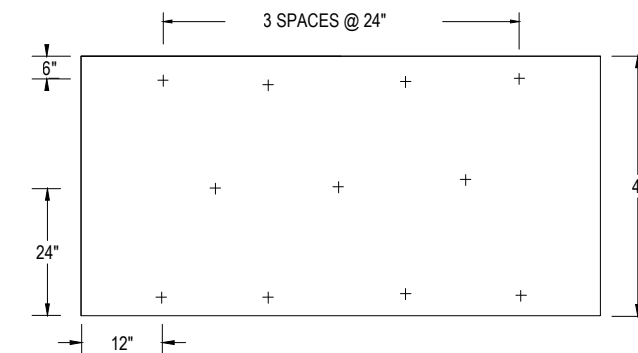
RESULTING WIND UPLIFT PRESSURES:

- ZONE 1: 20.0 PSF
- ZONE 2: 33.6 PSF
- ZONE 3: 50.5 PSF

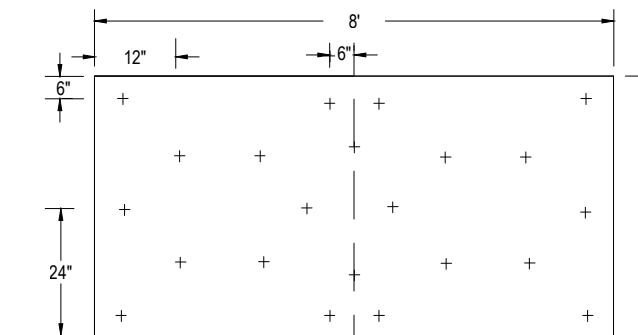
**FASTENING INSTRUCTIONS**

4 X 8 BOARD PATTERN

**ZONES 1 & 2 INSULATION BOARD FASTENER PATTERN: 11 FASTENERS PER BOARD**



**ZONE 3 INSULATION BOARD FASTENER PATTERN: 22 FASTENERS PER BOARD**



**OGDEN SD VOCATIONAL BLDG ROOF REPLACEMENT**  
 1950 MONROE BLVD, OGDEN, UT 84401

REVISION:

PROJECT REP: LOGAN DEWITT

PROJECT NO:

30-ES-190051

DATE: 05/31/19

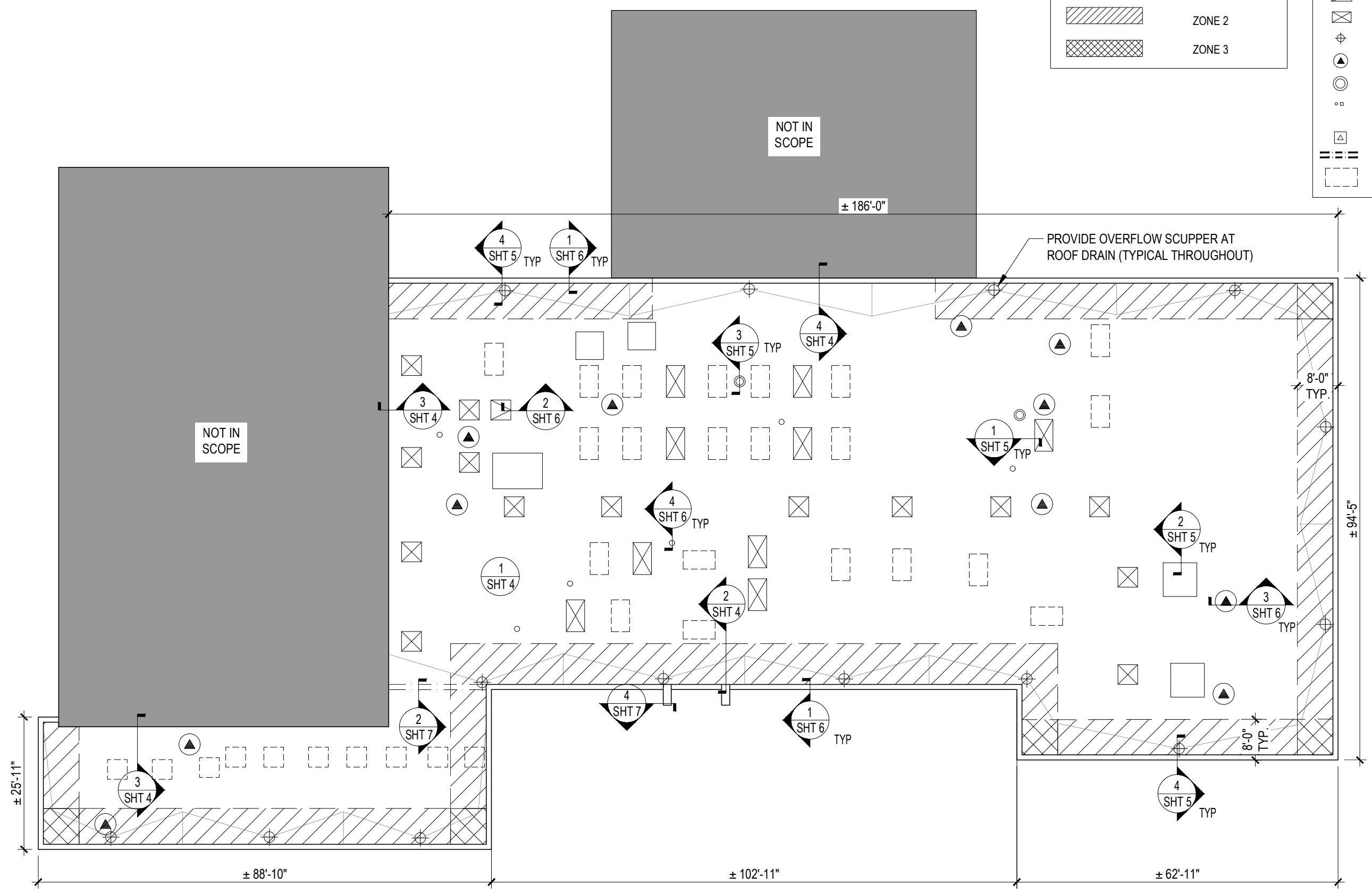
DWG BY: BRS

CHK BY: JLP

NOTE:  
CONTRACTOR SHALL FIELD VERIFY ALL  
DIMENSIONS, CONDITIONS, AND QUANTITIES.

WIND PRESSURE ZONE DESIGNATION	ZONE TYPE
[White Box]	ZONE 1
[Diagonal Hatching]	ZONE 2
[Cross-hatching]	ZONE 3

SYMBOL LEGEND	
[Square with circle]	MECH UNIT CURB
[Square with diagonal lines]	ROOF HATCH
[Square with 'X']	SKYLIGHT
[Circle with crosshair]	ROOF DRAIN
[Triangle with circle]	EXHAUST FAN
[Circle with dot]	HEAT STACK
[Circle with 'o']	PLUMBING STACK / ROOF PENETRATION
[Triangle with dot]	AIR INTAKE
[Dashed line]	EXPANSION JOINT
[Dotted line]	SKYLIGHT INFILL



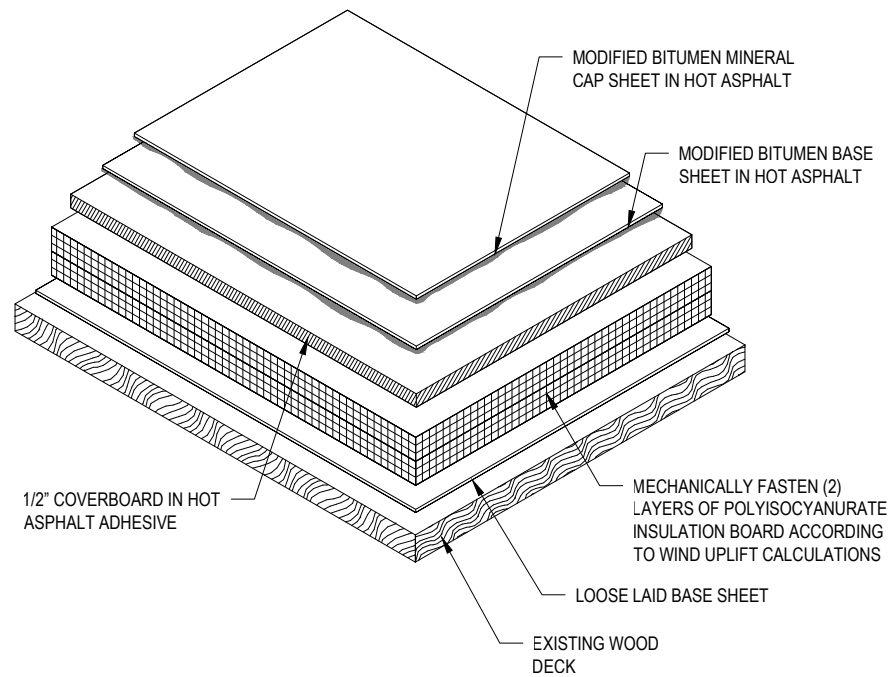
**ROOF PLAN**  
ARCH. REF.: SCALE: 1" = 20'-0"



OGDEN SD VOCATIONAL BLDG ROOF REPLACEMENT  
1950 MONROE BLVD, OGDEN, UT 84401

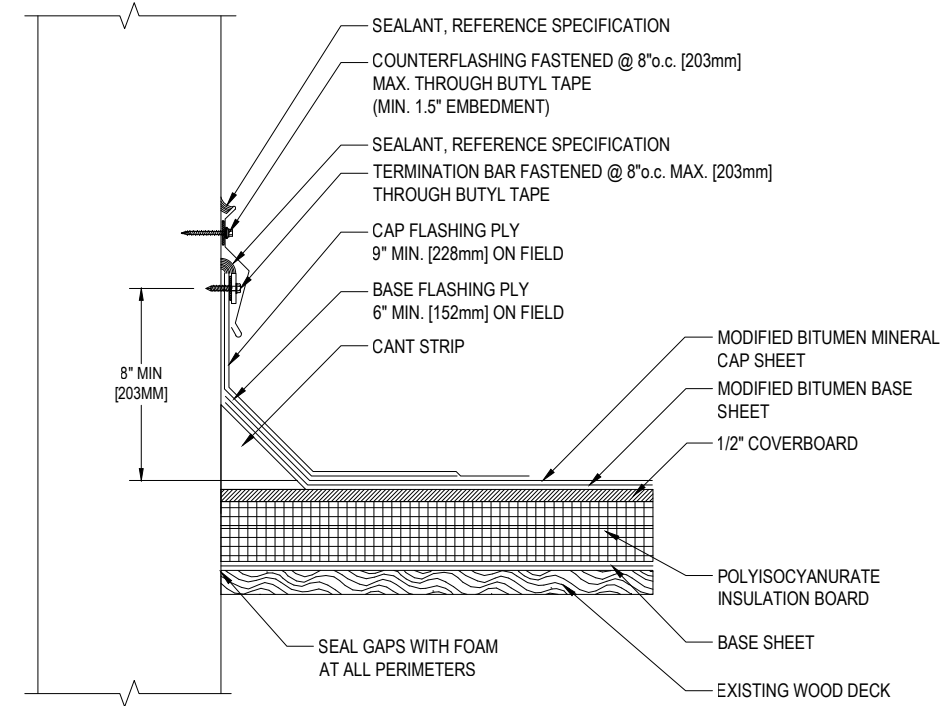
PROJECT REP: LOGAN DEWITT  
PROJECT NO: 30-ES-190051  
DATE: 05/31/19  
DWG BY: BRS  
CHK BY: JLP

REVISION:

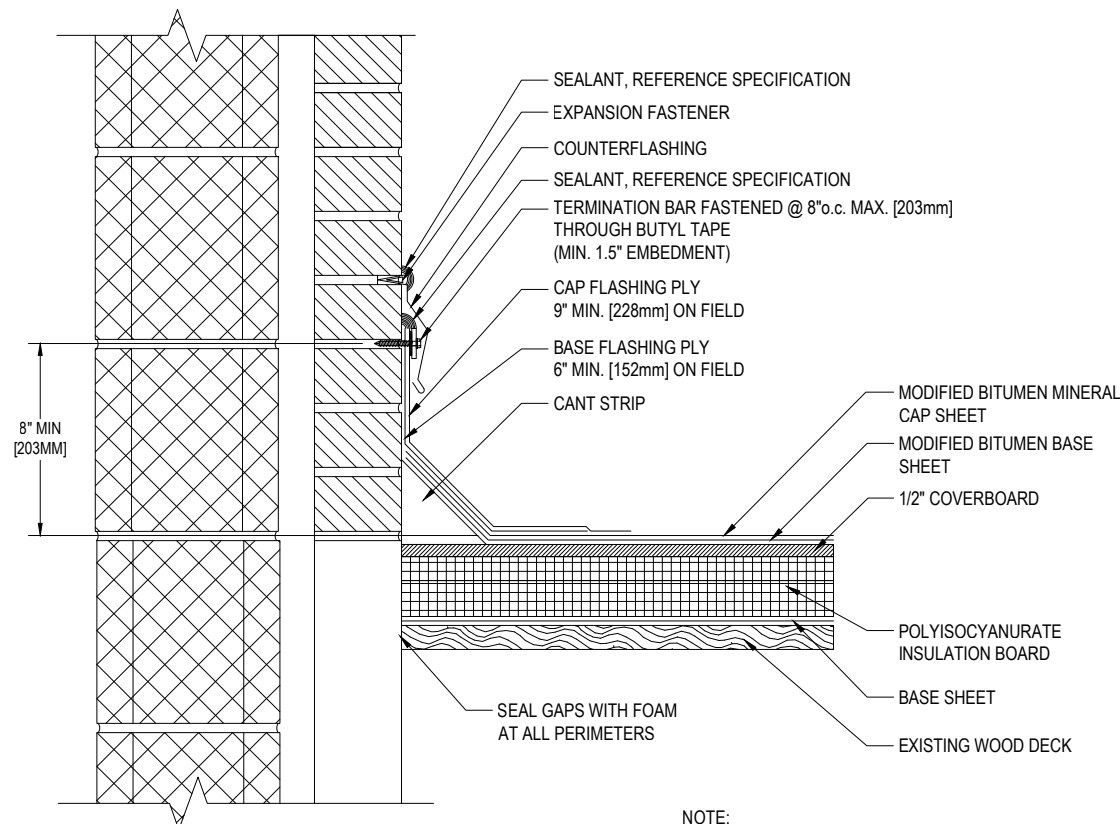


1 TYPICAL FIELD DETAIL  
SHT 4 SCALE: 1/2" = 1'-0"

NOTE:  
REFERENCE SPECIFICATION FOR SURFACING,  
MEMBRANE ADHESIVE TYPE, AND INSULATION/COVER  
BOARD TYPE AND ATTACHMENT METHOD.



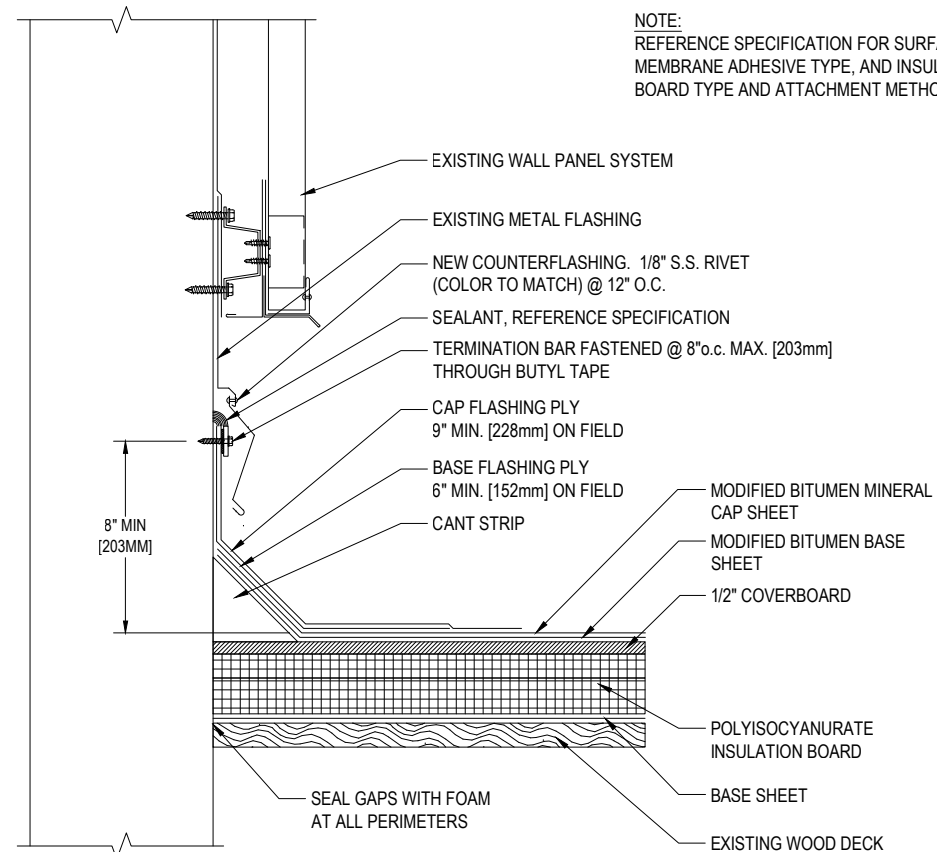
2 WALL FLASHING -  
SURFACE MOUNTED COUNTERFLASHING  
SHT 4 SCALE: 1/2" = 1'-0"



NOTE:  
REFERENCE SPECIFICATION FOR SURFACING,  
MEMBRANE ADHESIVE TYPE, AND INSULATION/COVER  
BOARD TYPE AND ATTACHMENT METHOD.

3 WALL FLASHING -  
REGLET MOUNTED COUNTERFLASHING  
SHT 4 SCALE: 1/2" = 1'-0"

NOTE:  
REFERENCE SPECIFICATION FOR SURFACING,  
MEMBRANE ADHESIVE TYPE, AND INSULATION/COVER  
BOARD TYPE AND ATTACHMENT METHOD.



4 WALL FLASHING AT WALL PANEL  
SHT 4 SCALE: 1/2" = 1'-0"

OGDEN SD VOCATIONAL BLDG ROOF REPLACEMENT  
1950 MONROE BLVD, OGDEN, UT 84401

PROJECT NO: 30-ES-190051 PROJECT REP: LOGAN DEWITT

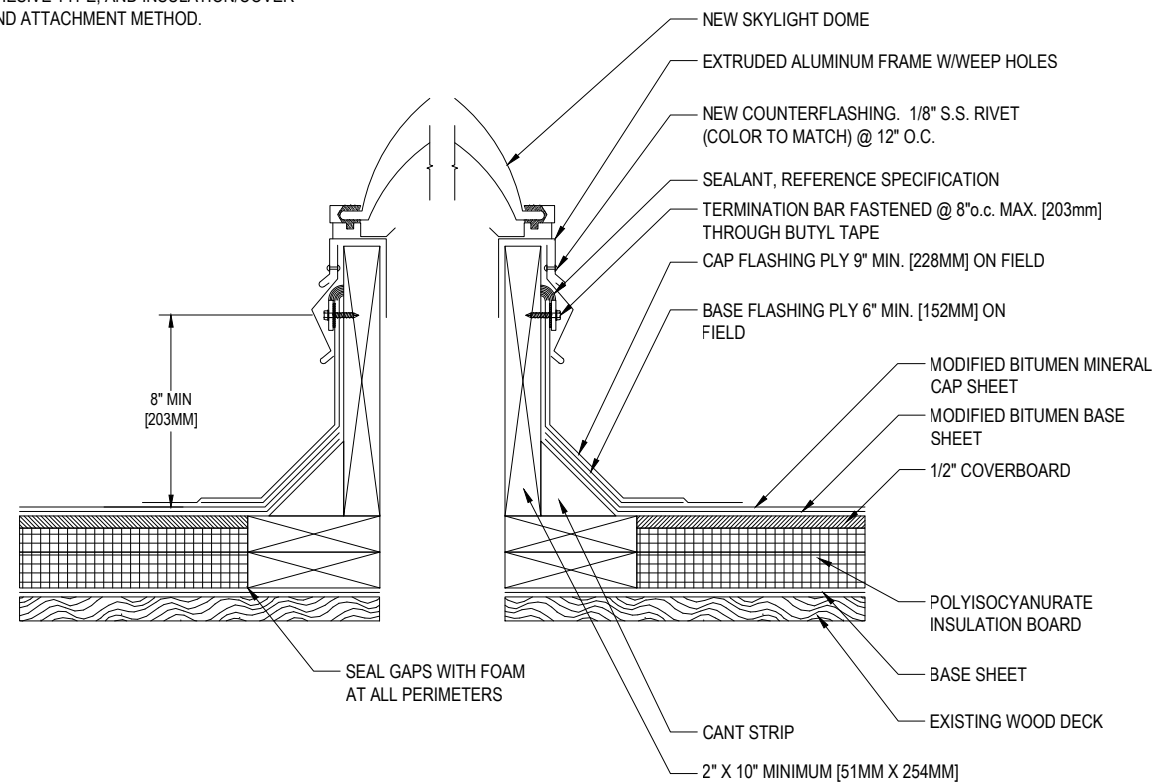
DATE: 05/31/19

DWG BY: BRS

CHK BY: JLP

REVISION:

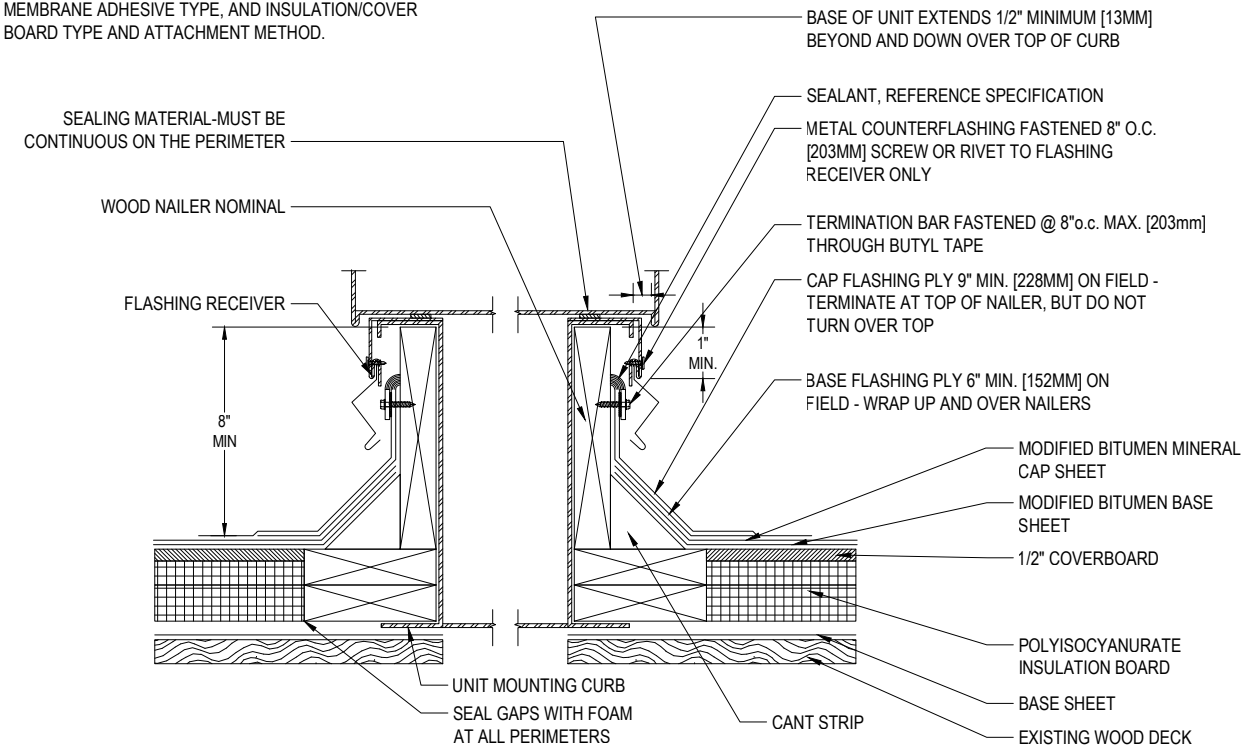
NOTE:  
REFERENCE SPECIFICATION FOR SURFACING,  
MEMBRANE ADHESIVE TYPE, AND INSULATION/COVER  
BOARD TYPE AND ATTACHMENT METHOD.



1 SKYLIGHT

SHT 5 SCALE: 1/2" = 1'-0"

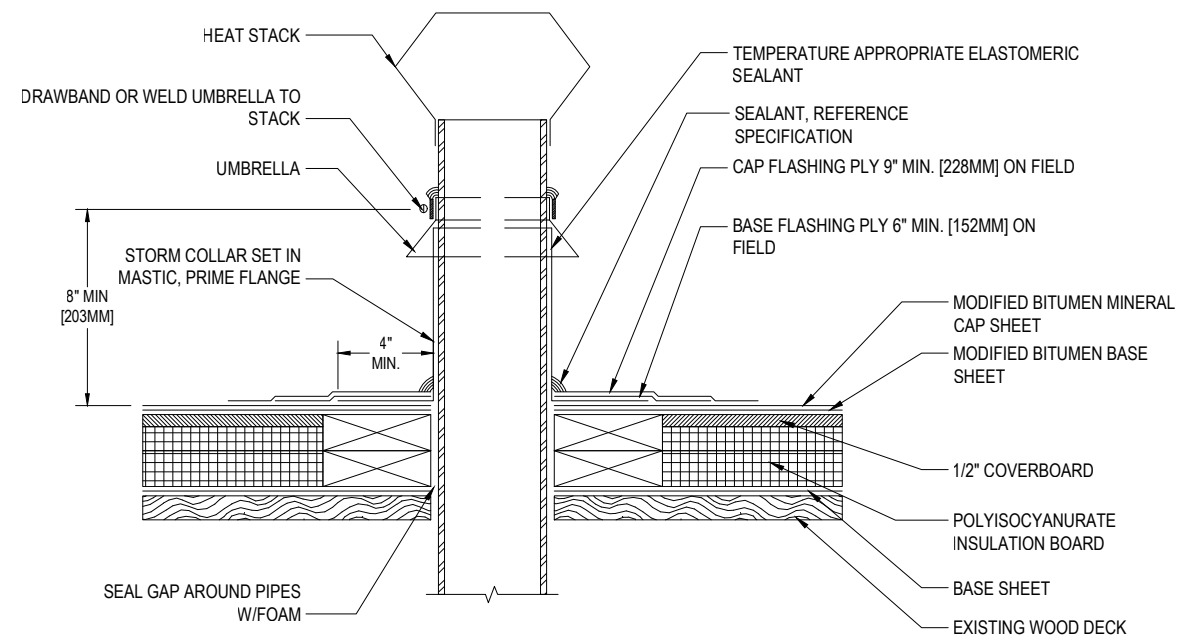
NOTE:  
REFERENCE SPECIFICATION FOR SURFACING,  
MEMBRANE ADHESIVE TYPE, AND INSULATION/COVER  
BOARD TYPE AND ATTACHMENT METHOD.



2 CURB DETAIL / AIR HANDLING STATION

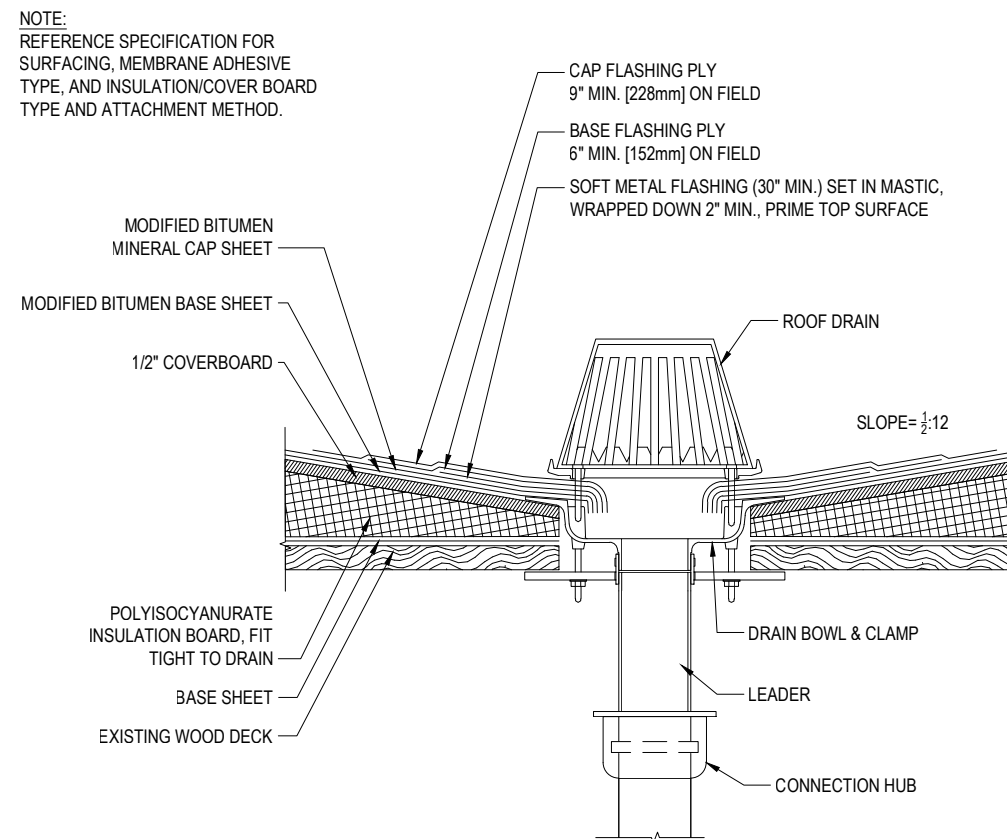
SHT 5 SCALE: 1/2" = 1'-0"

NOTE:  
REFERENCE SPECIFICATION FOR SURFACING, MEMBRANE ADHESIVE TYPE, AND INSULATION/COVER BOARD TYPE AND ATTACHMENT METHOD.



3 HEAT STACK

SHT 5 SCALE: 1/2" = 1'-0"



4 ROOF DRAIN

SHT 5 SCALE: 1/2" = 1'-0"

OGDEN SD VOCATIONAL BLDG ROOF REPLACEMENT  
1950 MONROE BLVD, OGDEN, UT 84401

PROJECT NO: 30-ES-190051  
PROJECT REP: LOGAN DEWITT

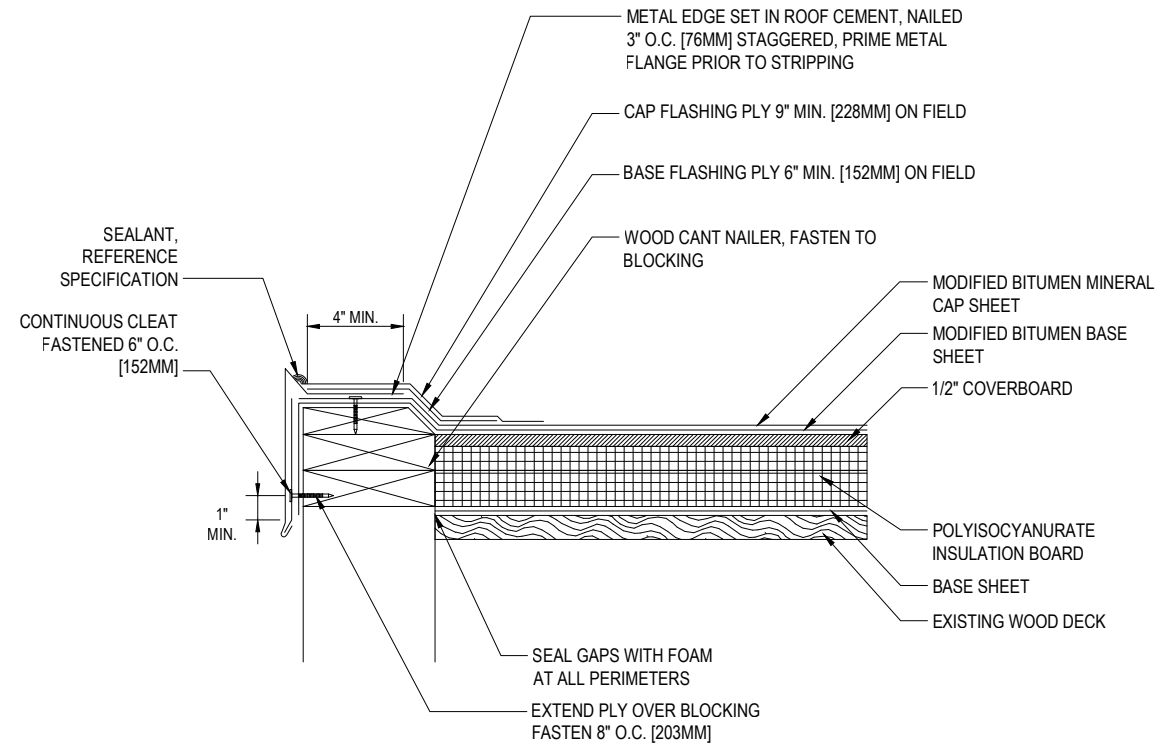
DATE: 05/31/19

DWG BY: BRS

CHK BY: JLP

REVISION:

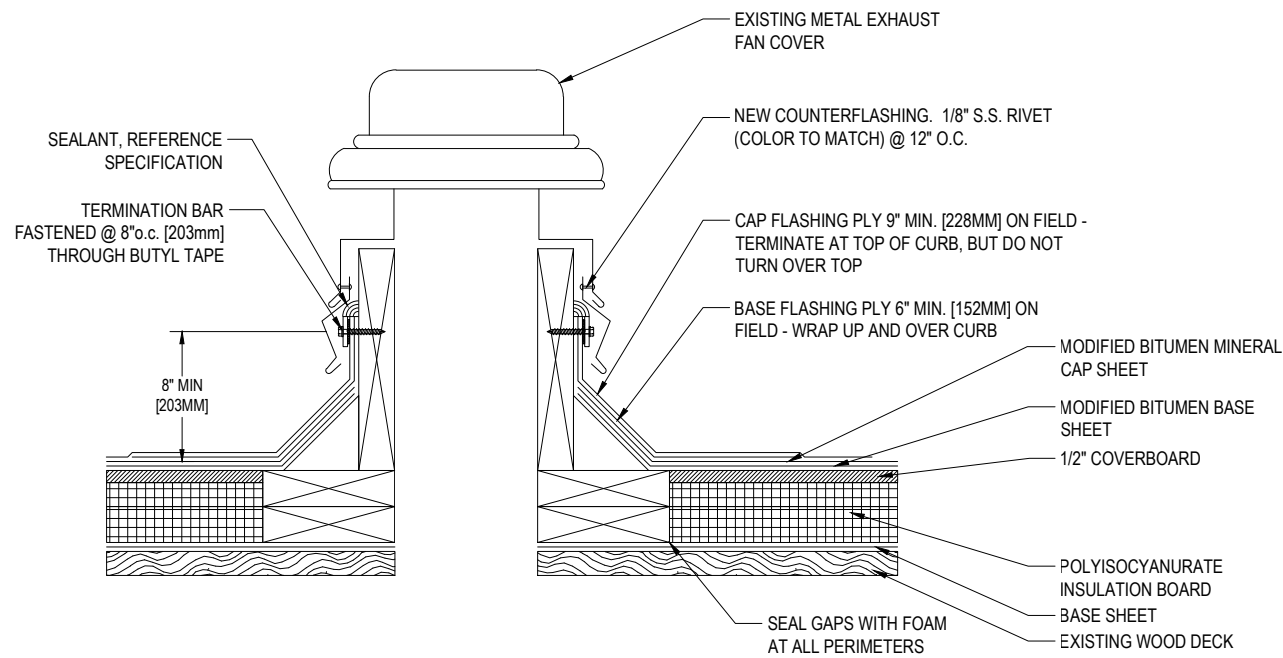
NOTE:  
REFERENCE SPECIFICATION FOR SURFACING,  
MEMBRANE ADHESIVE TYPE, AND INSULATION/COVER  
BOARD TYPE AND ATTACHMENT METHOD.



**1 METAL EDGE - RAISED**

SHT 6 SCALE: 1/2" = 1'-0"

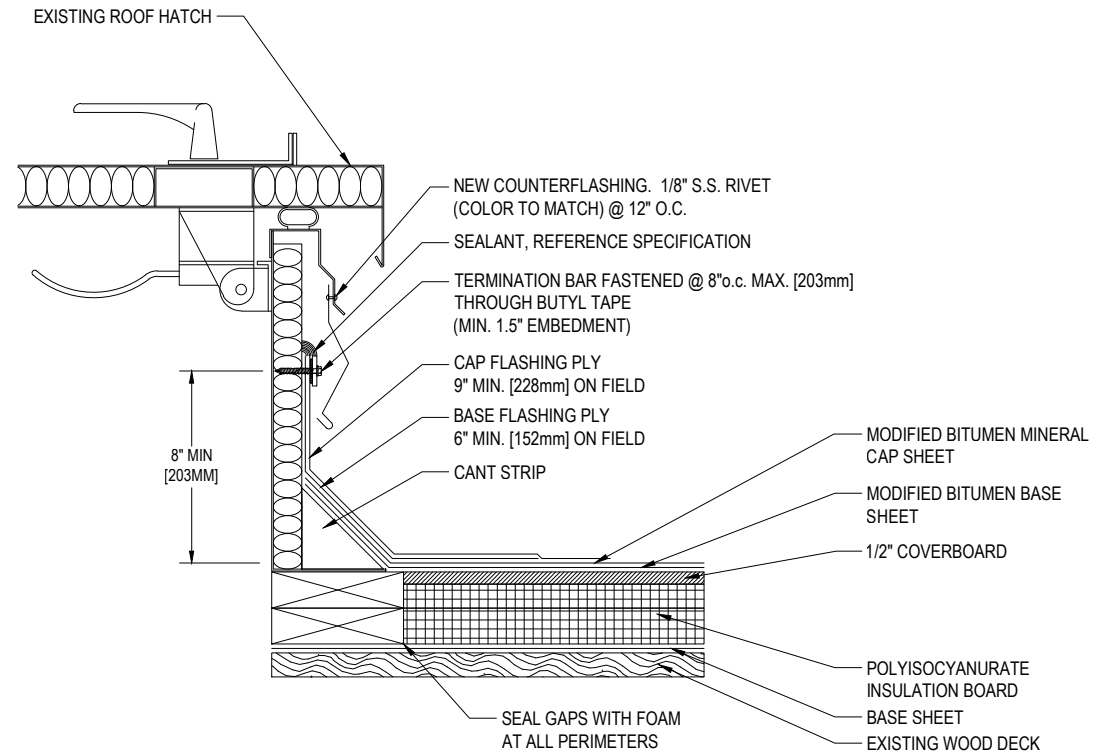
NOTE:  
REFERENCE SPECIFICATION FOR SURFACING,  
MEMBRANE ADHESIVE TYPE, AND INSULATION/COVER  
BOARD TYPE AND ATTACHMENT METHOD.



**3 EXHAUST FAN**

SHT 6 SCALE: 1/2" = 1'-0"

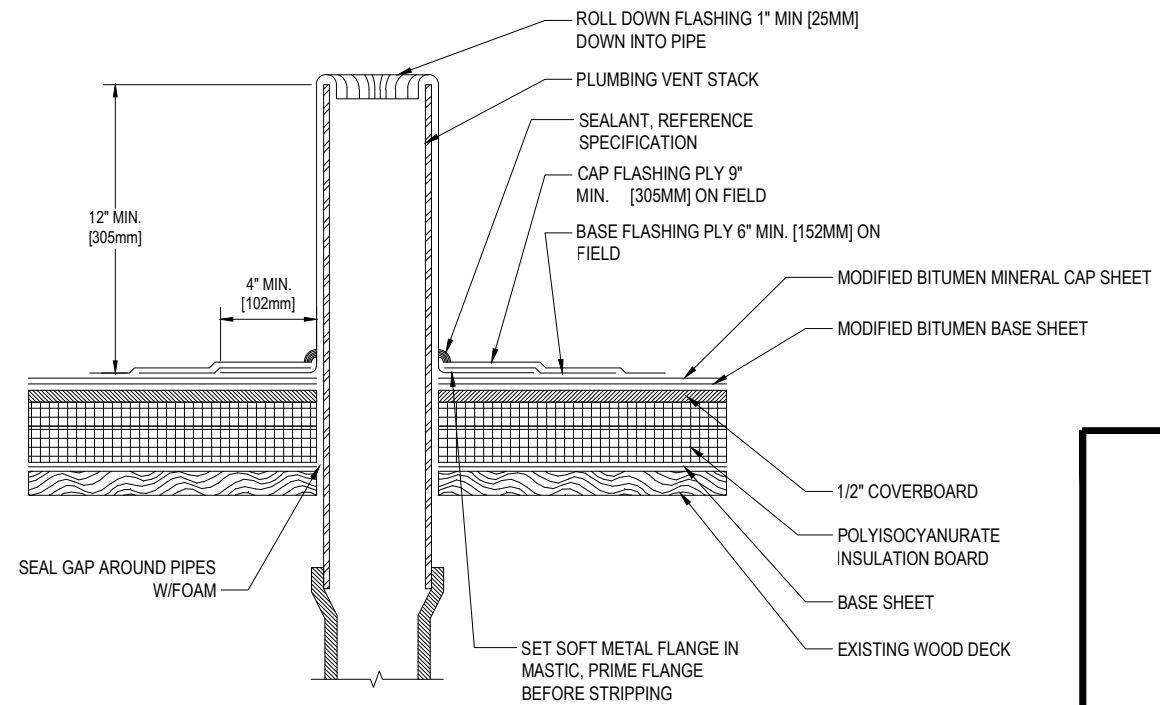
NOTE:  
REFERENCE SPECIFICATION FOR SURFACING,  
MEMBRANE ADHESIVE TYPE, AND INSULATION/COVER  
BOARD TYPE AND ATTACHMENT METHOD.



**2 HATCH DETAIL**

SHT 6 SCALE: 1/2" = 1'-0"

NOTE:  
REFERENCE SPECIFICATION FOR SURFACING,  
MEMBRANE ADHESIVE TYPE, AND INSULATION/COVER  
BOARD TYPE AND ATTACHMENT METHOD.



**4 PLUMBING STACK**

SHT 6 SCALE: 1/2" = 1'-0"

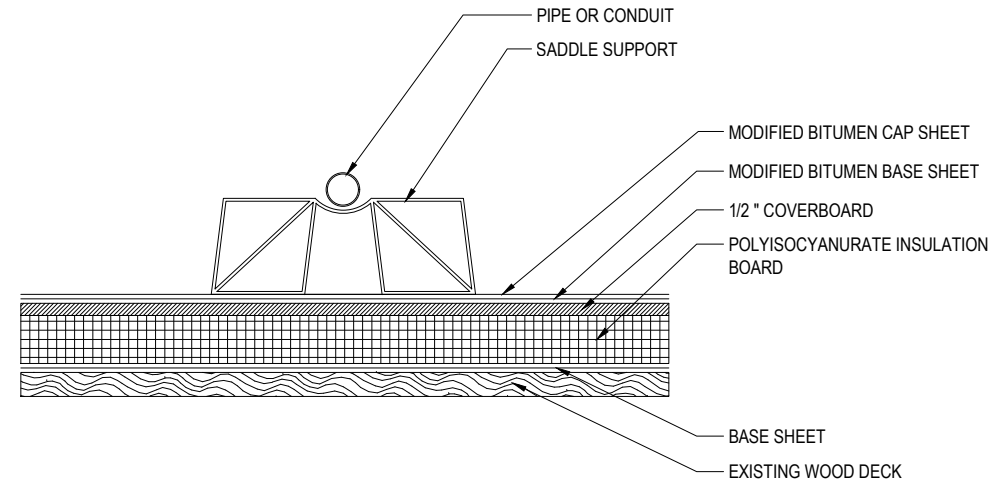
OGDEN SD VOCATIONAL BLDG ROOF REPLACEMENT  
1950 MONROE BLVD, OGDEN, UT 84401

PROJECT NO: 30-ES-190051 DATE: 05/31/19 DWG BY: BRS CHK BY: JLP  
PROJECT REP: LOGAN DEWITT

REVISION:



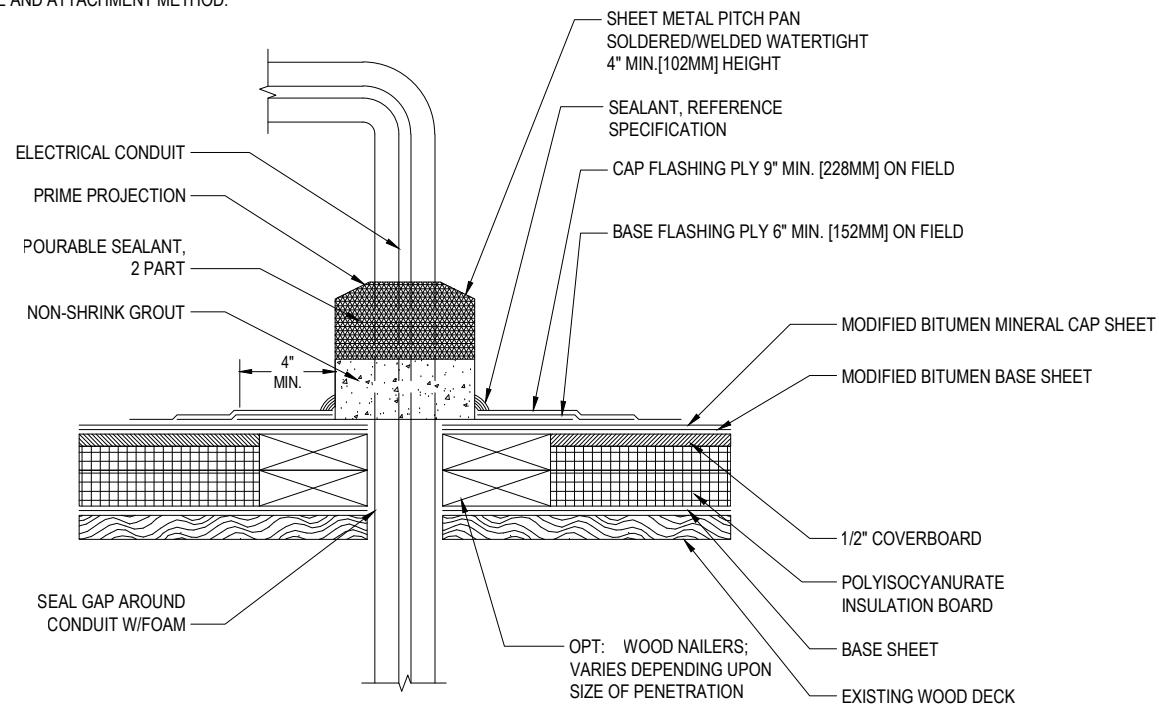
NOTE:  
REFERENCE SPECIFICATION FOR SURFACING,  
MEMBRANE ADHESIVE TYPE, AND INSULATION/COVER  
BOARD TYPE AND ATTACHMENT METHOD.



**1 SLEEPER (PRE-FABRICATED)**

SHT 7 SCALE: 1/2" = 1'-0"

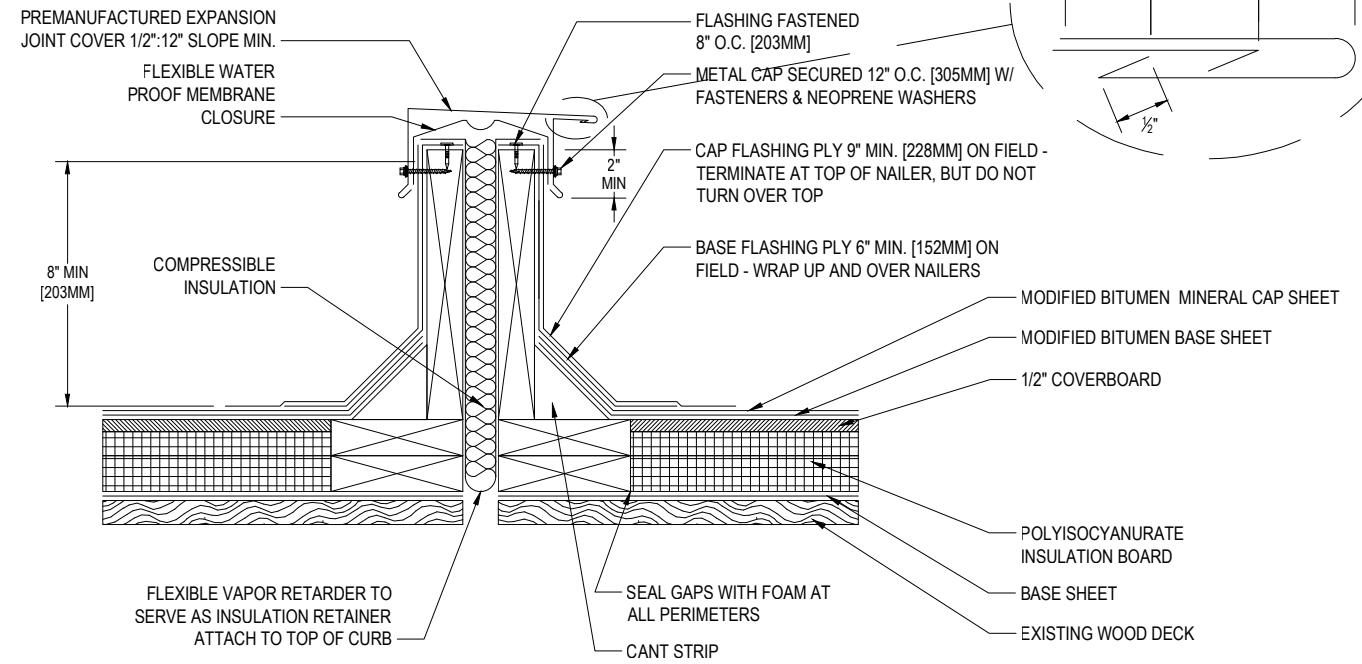
NOTE:  
REFERENCE SPECIFICATION FOR SURFACING,  
MEMBRANE ADHESIVE TYPE, AND INSULATION/COVER  
BOARD TYPE AND ATTACHMENT METHOD.



**3 CONDUIT PENETRATION**

SHT 7 SCALE: 1/2" = 1'-0"

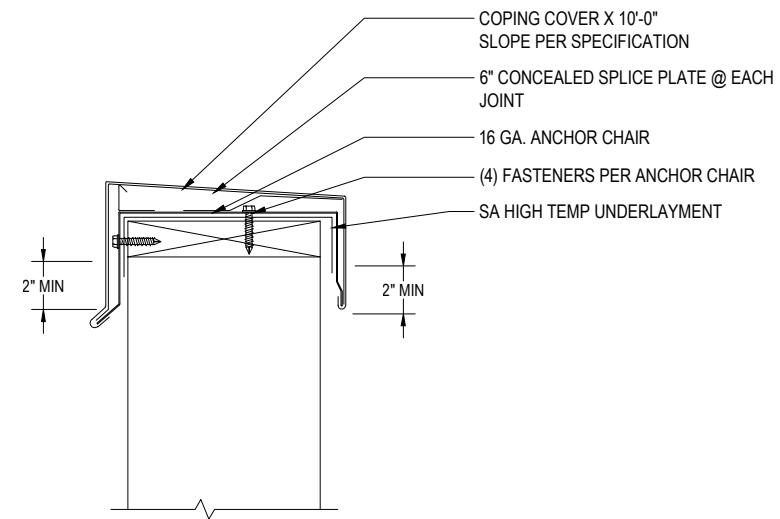
NOTE:  
REFERENCE SPECIFICATION FOR SURFACING,  
MEMBRANE ADHESIVE TYPE, AND INSULATION/COVER  
BOARD TYPE AND ATTACHMENT METHOD.



**2 EXPANSION JOINT**

SHT 7 SCALE: 1/2" = 1'-0"

NOTE:  
REFERENCE SPECIFICATION FOR SURFACING,  
MEMBRANE ADHESIVE TYPE, AND INSULATION/COVER  
BOARD TYPE AND ATTACHMENT METHOD.



**4 PARAPET COPING CAP**

SHT 7 SCALE: 1/2" = 1'-0"

OGDEN SD VOCATIONAL BLDG ROOF REPLACEMENT  
1950 MONROE BLVD, OGDEN, UT 84401

PROJECT NO: 30-ES-190051 DATE: 05/31/19 DWG BY: BRS CHK BY: JLP  
PROJECT REP: LOGAN DEWITT

REVISION: