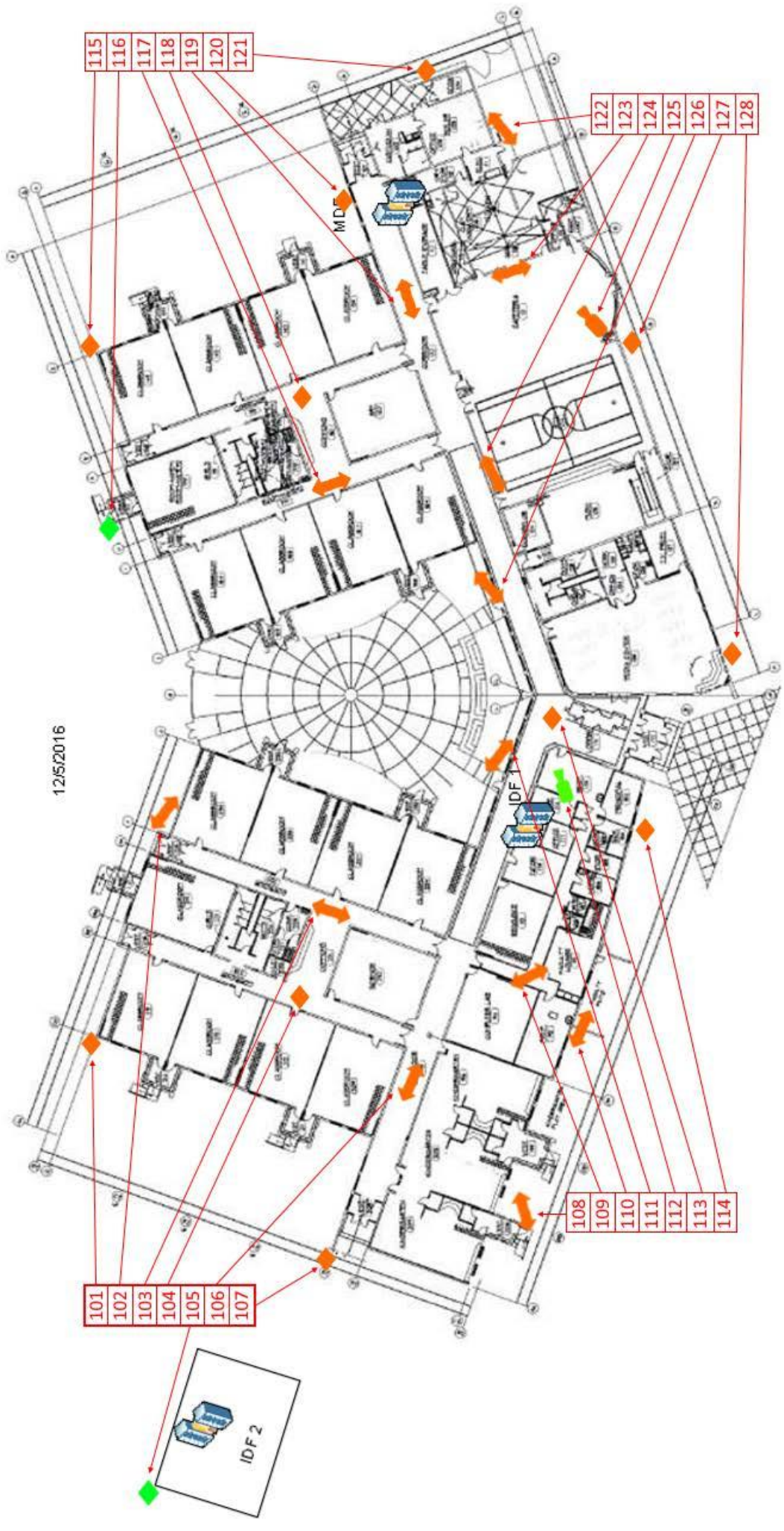


Lincoln Elementary School

12/5/2016

Two-way Camera	Green - New Camera and Ethernet
One-Way Camera	Orange - New Camera Only
Four-Way Camera	Blue - Unmodified existing cameras

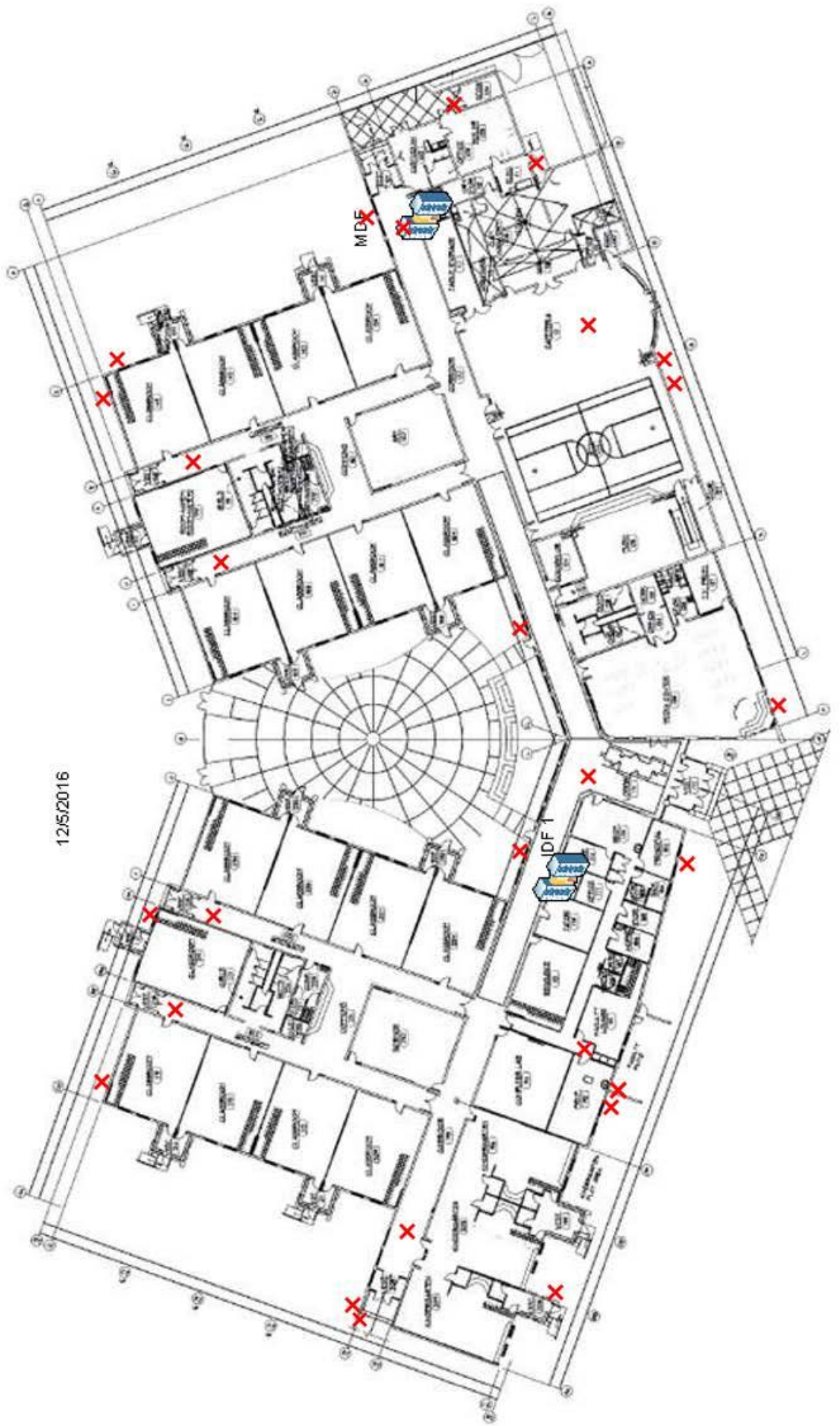


- 101
- 102
- 103
- 104
- 105
- 106
- 107

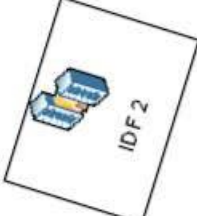
- 108
- 109
- 110
- 111
- 112
- 113
- 114

- 115
- 116
- 117
- 118
- 119
- 120
- 121

- 122
- 123
- 124
- 125
- 126
- 127
- 128



12/5/2016



ID#	Model	Mount	IDF	Totals	Model #	Quantity
101	P3727-PLE	Corner	IDF1	P3727-PLE Cameras	P3727-PLE	13
102	P3715-PLVE	Wall	IDF1	P3715-PLVE Cameras	P3715-PLVE	13
103	P3715-PLVE	Flush	IDF1	M3066-V Cameras	M3066-V	2
104	P3727-PLE	Flush	IDF1	P3727-PLE Pendant Kits	T94N01D	10
105	P3727-PLE	Corner	IDF2	P3727-PLE Wall Mounts	T91D61	10
106	P3715-PLVE	Flush	IDF1	P3727-PLE Corner Brackets	T91A64	6
107	P3727-PLE	Corner	IDF1	P3715-PLVE Pendant Kits	T94N02D	8
108	P3715-PLVE	Corner	IDF1	P3715-PLVE Wall Mounts	T91D61	8
109	P3715-PLVE	Flush	IDF1	P3715-PLVE Corner Brackets	T91A64	1
110	P3715-PLVE	Wall	IDF1			
111	P3715-PLVE	Wall	IDF1			
112	M3066-V	Flush	IDF1			
113	P3727-PLE	Flush	IDF1			
114	P3727-PLE	Wall	IDF1			
115	P3727-PLE	Corner	MDF			
116	P3727-PLE	Corner	MDF			
117	P3715-PLVE	Flush	MDF			
118	P3727-PLE	Flush	MDF			
119	P3715-PLVE	Flush	MDF			
120	P3727-PLE	Wall	MDF			
121	P3727-PLE	Corner	MDF			
122	P3715-PLVE	Wall	MDF			
123	P3715-PLVE	Wall	MDF			
124	P3715-PLVE	Wall	MDF			
125	M3066-V	Flush	MDF			
126	P3715-PLVE	Wall	MDF			
127	P3727-PLE	Wall	MDF			
128	P3727-PLE	Wall	MDF			